

DISNEY PARKS BLOG  
**OOGIE BOOGIE**  
FOLDABLE MASK TEMPLATE

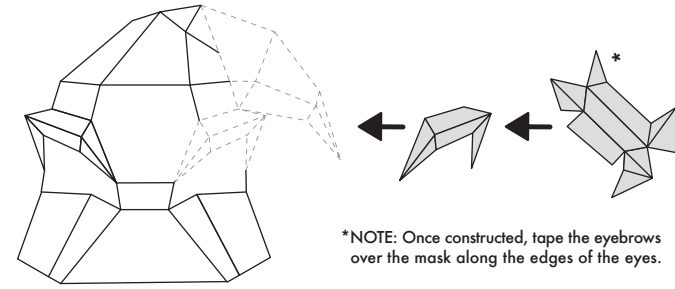
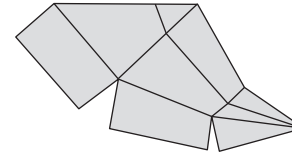
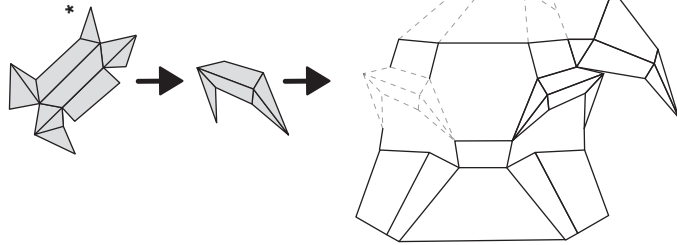
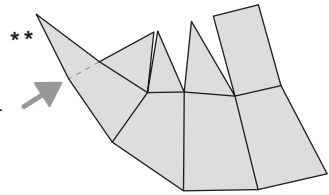
## YOU WILL NEED:

- Printed Oogie Boogie Foldable Mask template
  - A few sheets of cardstock, poster board, construction paper or any other thin board.
  - Scissors or a craft knife
  - Ruler
  - Tape
  - Glue stick
  - Ribbon or Yarn
- Optional: Colored paper, paint, glitter, markers, crayons, stickers or anything else you would like to use to decorate your mask.

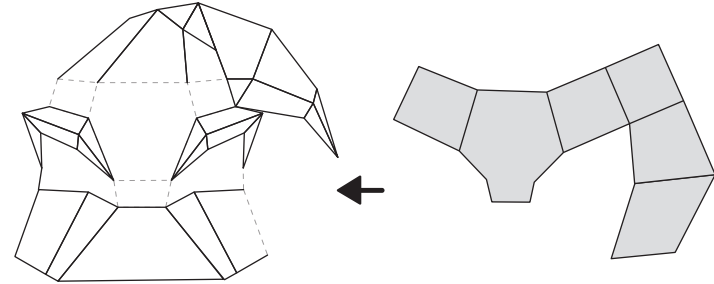
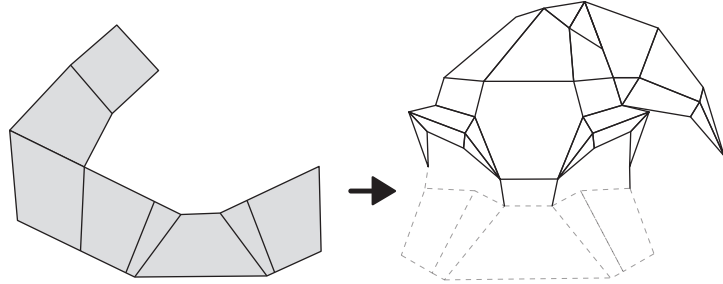
## DIRECTIONS:

- 1** Begin by printing out the template on US Letter size (8.5 by 11 inch) paper. Mask is already sized to fit, do not scale when printing.
- 2** Depending on your mask material, you can either:
  - Print the template directly on the material.
  - Cut out along the mask outline and arrange the template pieces over your mask material, then trace and number around the edges.
  - You could tape or glue the template pieces to your mask material and then cut and score over the template.
- 3** Using your template pieces as a guide, cut out your mask material.
- 4** Using scissors or a craft knife lightly score all of the valley and mountain folds, then begin folding the pieces of your mask.
- 5** Assemble by matching the numbered edges in order.
- 6** Tape the matching numbered edges together. Tape the back as well as the front of the edges for a stronger hold.
- 7** Measure and tie a length of ribbon through the mask holes.
- 8** Enjoy!hh

**\*\*NOTE:** This triangle piece will be on the inside of your mask and #15 will lay over and align with this line.

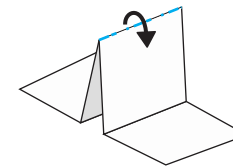


**\*NOTE:** Once constructed, tape the eyebrows over the mask along the edges of the eyes.

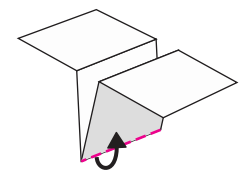


**TEMPLATE KEY:**

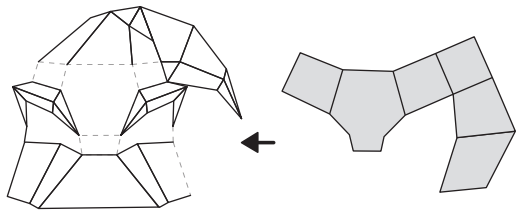
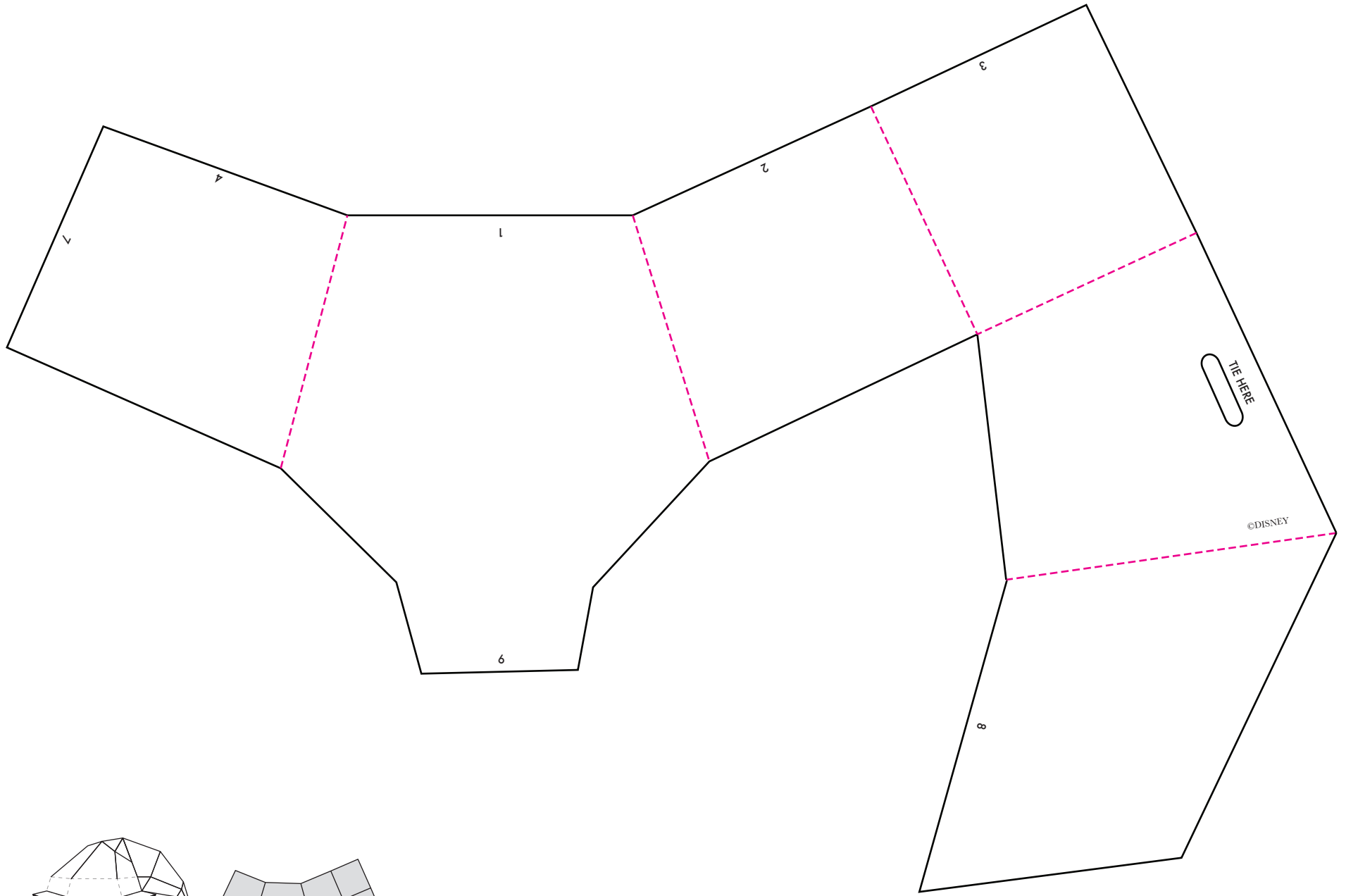
- Mask Outline
- - - Valley Fold
- . - . Mountain Fold

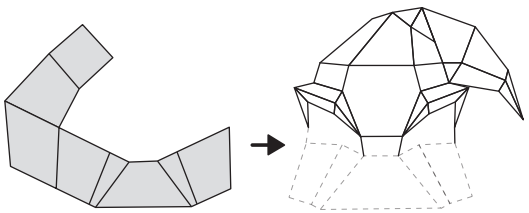
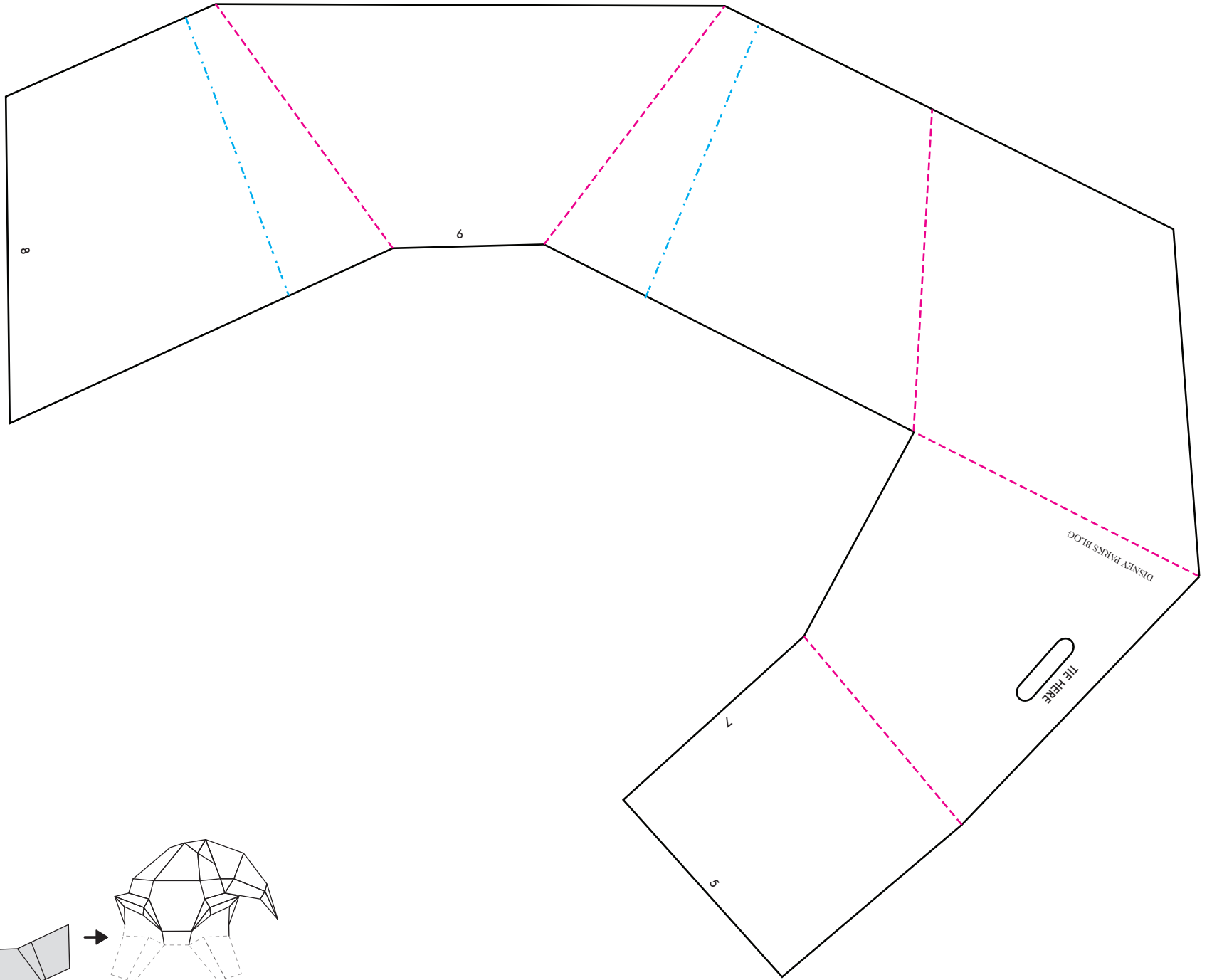


Mountain Fold

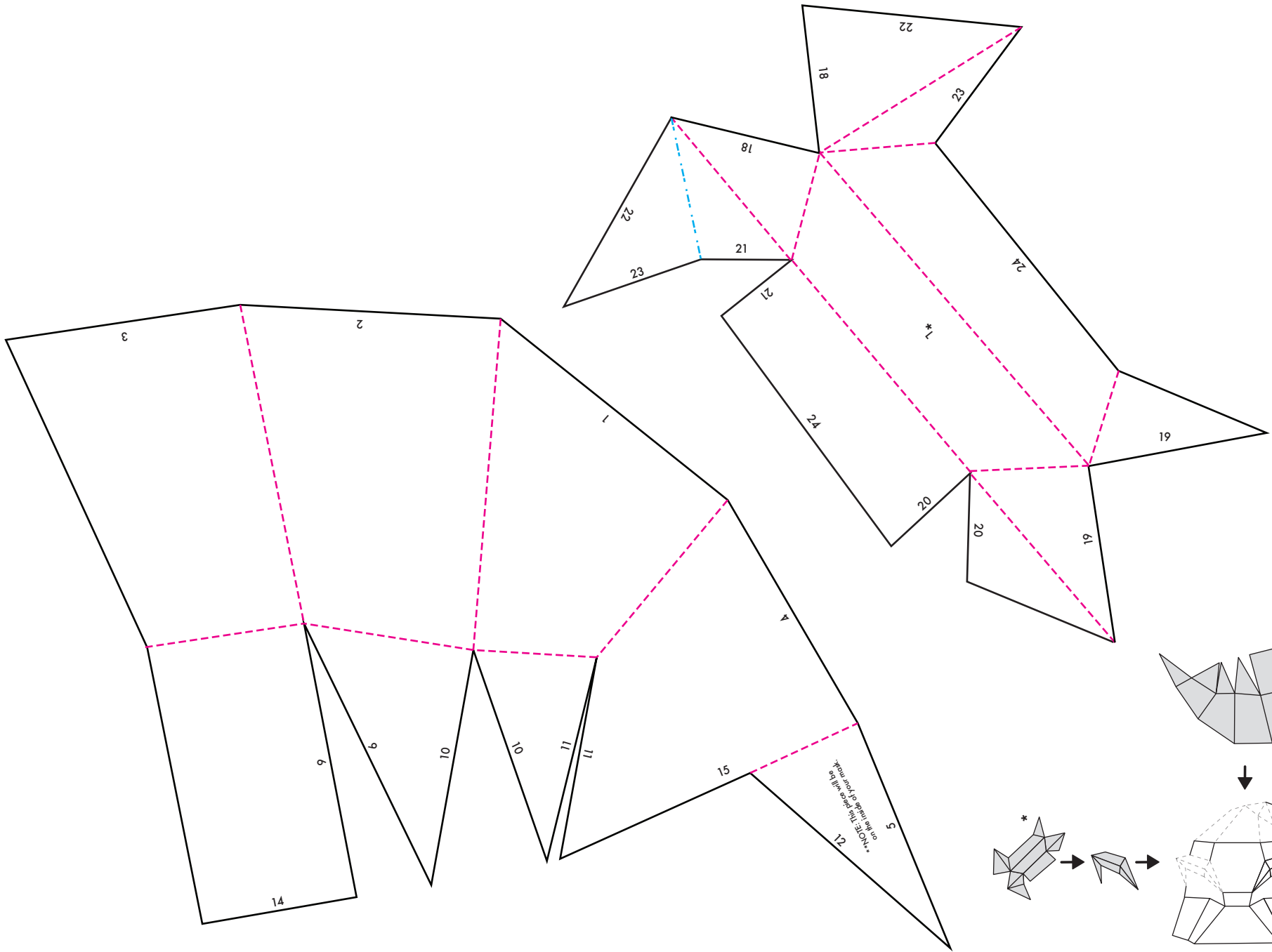


Valley Fold

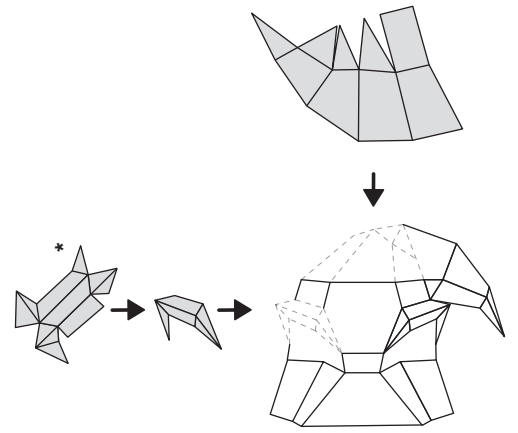




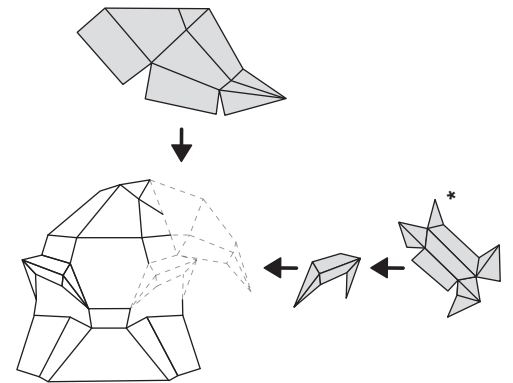
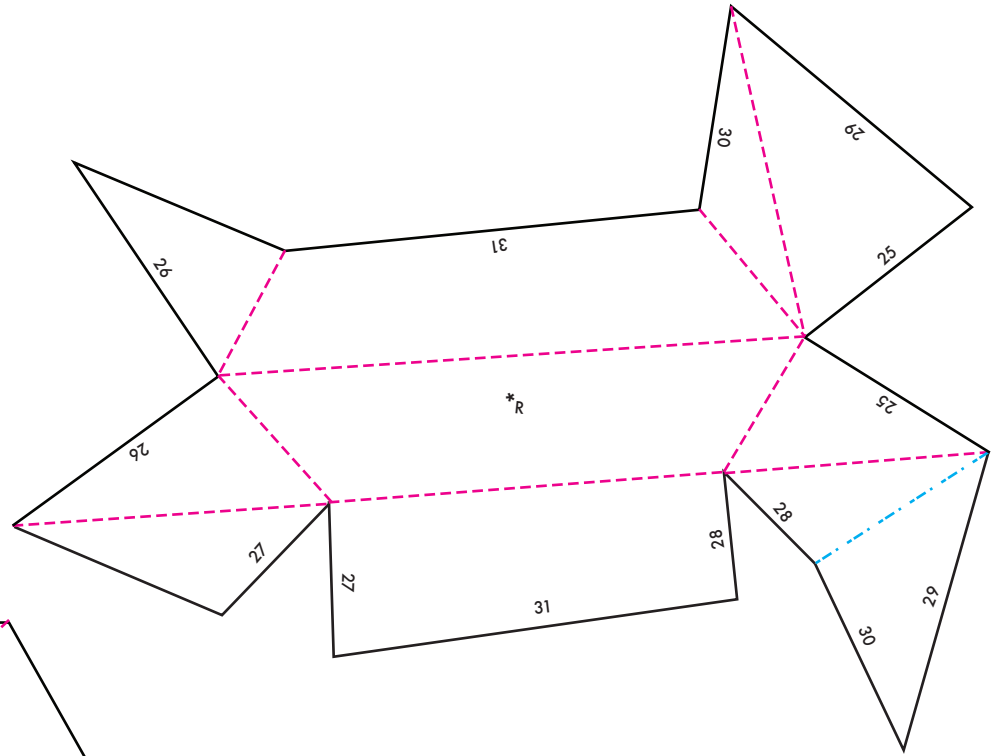
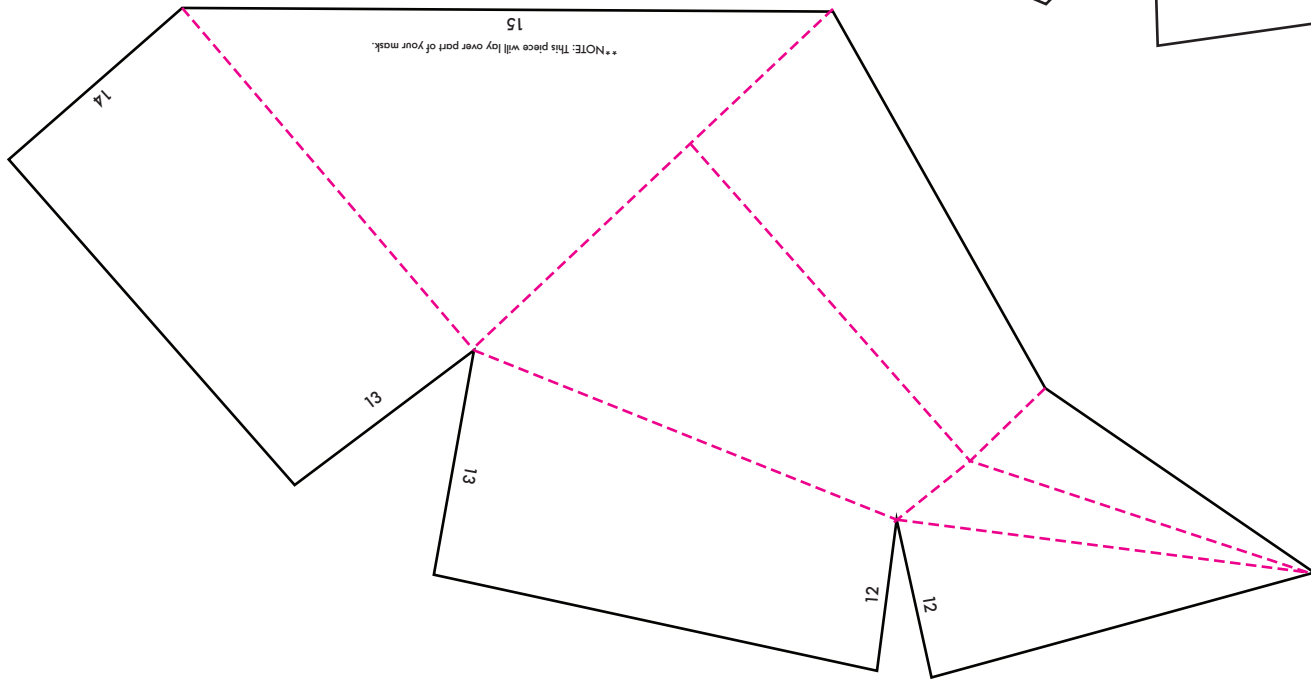
OOGIE BOOGIE MASK



\*NOTE: Once you have finished the mask, you will need to tape the eyebrows over the mask along the edges of the eyes.



\*NOTE: Once constructed, tape the eyebrows over the mask along the edges of the eyes.



\*NOTE: Once constructed, tape the eyebrows over the mask along the edges of the eyes.