

DISNEY PARKS BLOG
SCAR
FOLDABLE MASK TEMPLATE

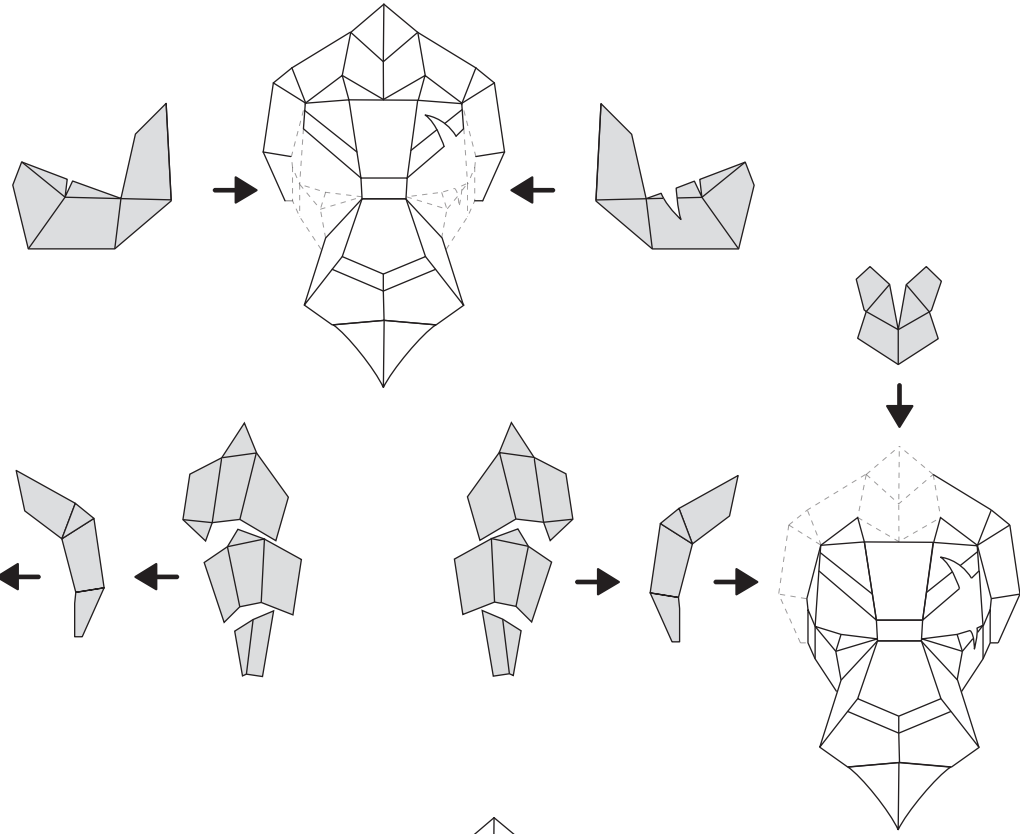
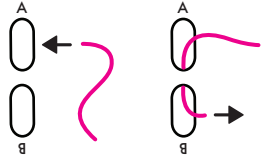
YOU WILL NEED:

- Printed Scar Foldable Mask template
 - A few sheets of cardstock, poster board, construction paper or any other thin board.
 - Scissors or a craft knife
 - Ruler
 - Tape
 - Glue stick
 - Ribbon or Yarn
- Optional: Colored paper, paint, glitter, markers, crayons, stickers or anything else you would like to use to decorate your mask.

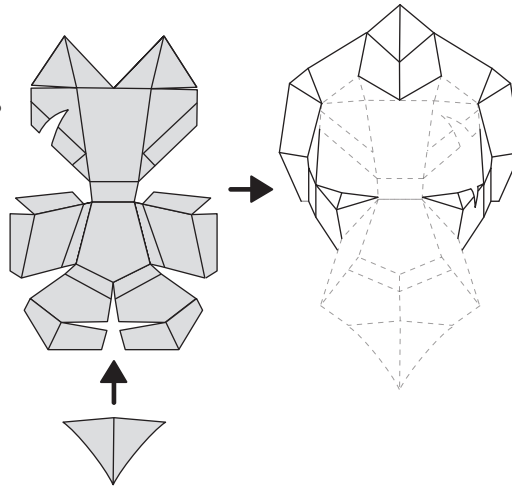
DIRECTIONS:

- 1** Begin by printing out the template on US Letter size (8.5 by 11 inch) paper. Mask is already sized to fit, do not scale when printing.
- 2** Depending on your mask material, you can either:
 - Print the template directly on the material.
 - Cut out along the mask outline and arrange the template pieces over your mask material, then trace and number around the edges.
 - You could tape or glue the template pieces to your mask material and then cut and score over the template.
- 3** Using your template pieces as a guide, cut out your mask material.
- 4** Using scissors or a craft knife lightly score all of the valley and mountain folds, then begin folding the pieces of your mask.
- 5** Assemble by matching the numbered edges in order.
- 6** Tape the matching numbered edges together. Tape the back as well as the front of the edges for a stronger hold.
- 7** Measure and tie a length of ribbon through the mask holes.
- 8** Enjoy!

****NOTE:** Attach string from the inside of your mask.
Push string through hole A and pull back in through hole B, then tie. Repeat with other side of mask.

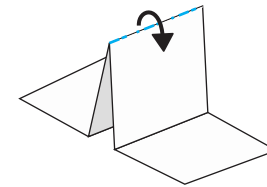


***NOTE:** Cut out the scar last and the mask will keep its shape better when putting the mask together.

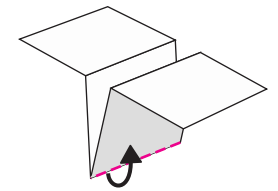


TEMPLATE KEY:

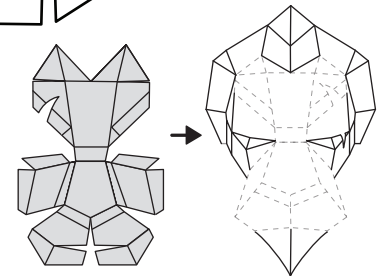
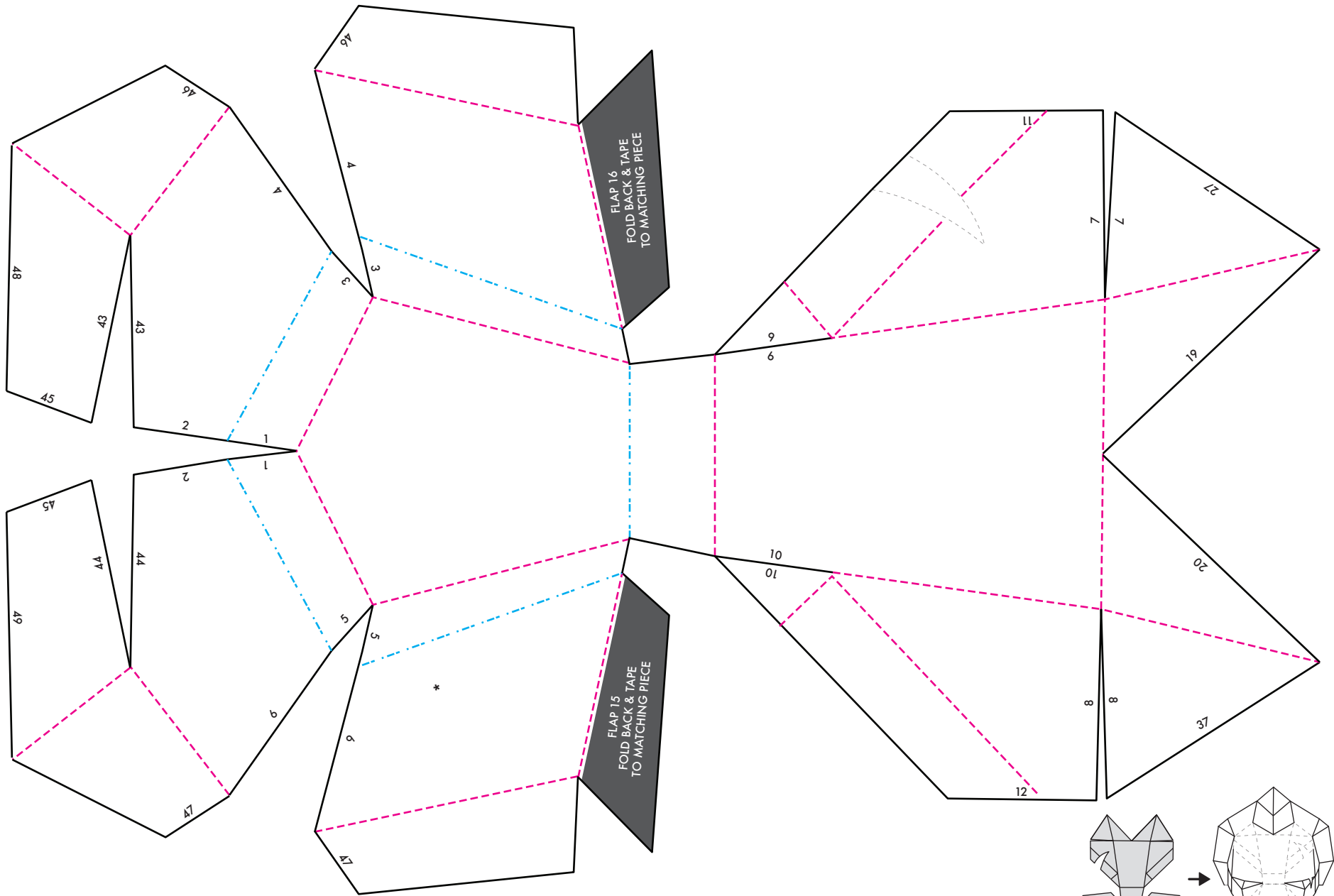
- Mask Outline
- - - Valley Fold
- · - · - Mountain Fold



Mountain Fold



Valley Fold



*NOTE: Cut out the scar last and the mask will keep its shape better when putting the mask together.

