

Disney Parks Blog

presents

Disney Paper Parks

King Arthur Carrousel

designed by Lyndsey Vincent

featuring the Main Street Trolley and Park Extras

designed by Amy Young

&

Fantasyland Trees

designed by Stephanie Jazmines

of



Walt Disney IMAGINEERING

#DisneyMagicMoments | #DisneyPaperParks



Disney Paper Parks

#DisneyMagicMoments | #DisneyPaperParks

HISTORY

One of the original opening day attractions at Disneyland Park in 1955, King Arthur Carrousel and most of its horses date back to 1922! This magical masterpiece was handcrafted by the Dentzel Carousel Company in Philadelphia, Pennsylvania and eventually found its way to Sunnyside Beach Park in Toronto, Canada in 1922 before being purchased by Walt Disney.

Since Walt Disney wanted only jumping horses for his carrousel – not the other animals which were part of the original – additional horses were added from another at Coney Island. Each horse on King Arthur Carrousel is a hand-carved antique, with a unique color palette - no two horses are painted alike! We hope you enjoy creating your own miniature version of this beloved Disneyland attraction!

MATERIALS



Glue



Scissors



Tape



Paper Clip (1)



Crayons



Cardboard



Straws (7)

GUIDE

Lines



Valley fold, fold in front



Mountain fold, fold behind



Cut

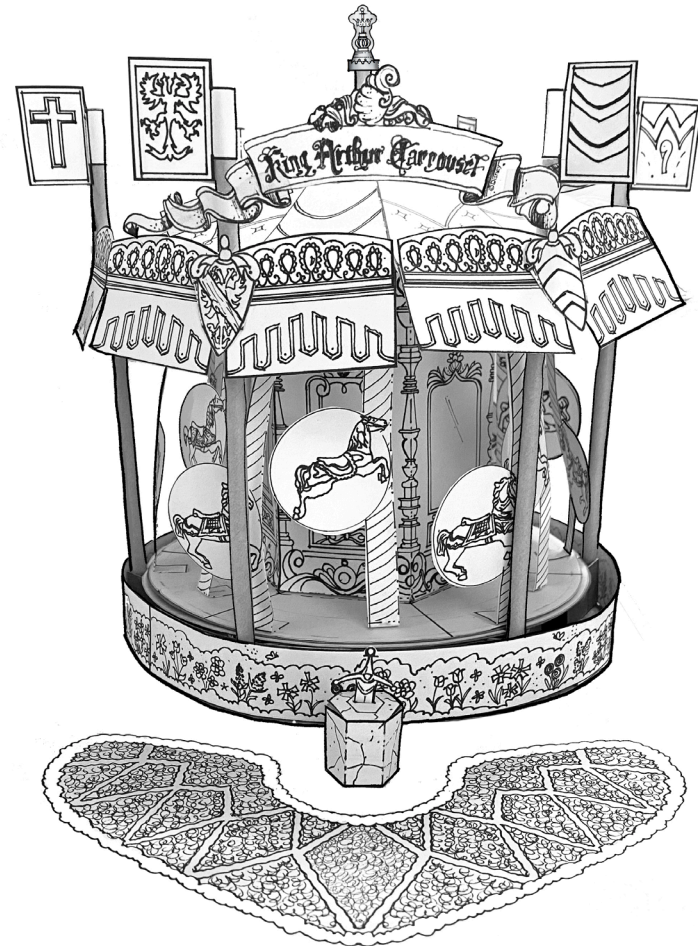


X-ray or guide line.



Hole Punch

KING ARTHUR CARROUSEL



INSTRUCTIONS

1. Color the pages.
2. Cut out the pieces on each sheet - you can be as detailed as you'd like!
3. Take your "Large Base Template" and use it to trace a circle onto cardboard and cut out. Repeat this step with your "Mid-Base" and "Spinner Base", this time punching a hole in the center, as indicated, and gluing the paper templates on top. You should now have (3) base piece total. Set aside.
4. Using your "Base Support Template", trace the outline (6) times onto thin cardboard. Cut the pieces out and fold down the center as indicated to create a "V" shape. Glue these (6) pieces of cardboard to the underside of your "Mid-Base" circle, aligning the point of the cardboard "V" with the lines on the template. Make sure you leave enough room to insert your straw "tent poles"

SEE INSTRUCTIONS CONTINUED ON NEXT SHEET...



Disney Paper Parks

#DisneyMagicMoments | #DisneyPaperParks

INSTRUCTIONS CONTINUED

5. Using the “Column Base Template”, trace the outline onto cardboard and cut out (1). Punch a hole in the center as indicated – this should line up with the holes in your (2) base pieces when placed on top.
6. Assemble the “Inner Column” by folding and gluing together as indicated to create a 6-sided hexagonal tower. Take your “Column Base Template” and insert into the tower – glue base flaps to cardboard as indicated.
7. Take (1) of your straws and cut (4) notches in the base, about 1/4” up from the bottom. Fold (4) tabs out and glue or tape to the inside center of your assembled “Inner Column”. **IMPORTANT:** Make sure your straw aligns with the holes in the cardboard bases and is securely attached to the base (Diagram A).
8. With an adult’s help, unfold the paperclip into an “L” shape. Starting from the bottom, thread the paper clip through the “Mid-Base”, “Spinner Base” and “Inner Column” into the straw. This will allow the carousel to spin effortlessly! Make adjustments to the spinner as needed before moving onto the next step.
9. Glue the “Mid-Base” and attached components to the “Large Base” by applying glue to the (6) cardboard V’s.
10. Assemble “Carousel Horses” by folding in half and glueing together. If using, assemble “Carousel Bench” as indicated by dashed lines. If using only horses, assemble all (12); if using the “Carousel Bench” assemble (11) horses. Glue components to “Spinner Base” using the small circles as guides for placement. Glue or tape tops of horse posts to small tabs on “Inner Column” to help horses stay upright (Diagram A).
11. Punch holes in the “Tent Roof Panels” as indicated – ensure holes are big enough for your straws to go through without ripping the paper, but not too big that the tent roof will slide down. You can use tape wrapped around the straws to help keep the roof in place. Assemble the tent canopy by folding and gluing the (6) Tent Roof Panels as indicated.
12. Take your (6) remaining straws and insert into the (6) cardboard “Vs” at base, then thread through the holes in your assembled tent roof. The tent roof should sit just slightly above the “Inner Column”, but not touching so that the horses can spin freely.
13. You’re now ready to decorate your tent roof! Glue the (12) “Tent Top Trims”, and the (6) “Shields” onto your tent roof as indicated. Glue (6) “Flags” onto the straw tent poles.

KING ARTHUR CARROUSEL

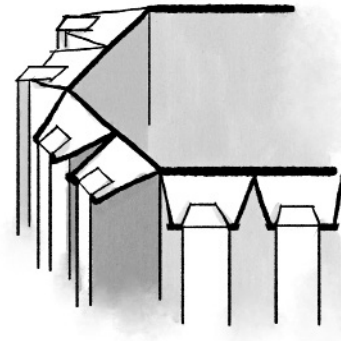
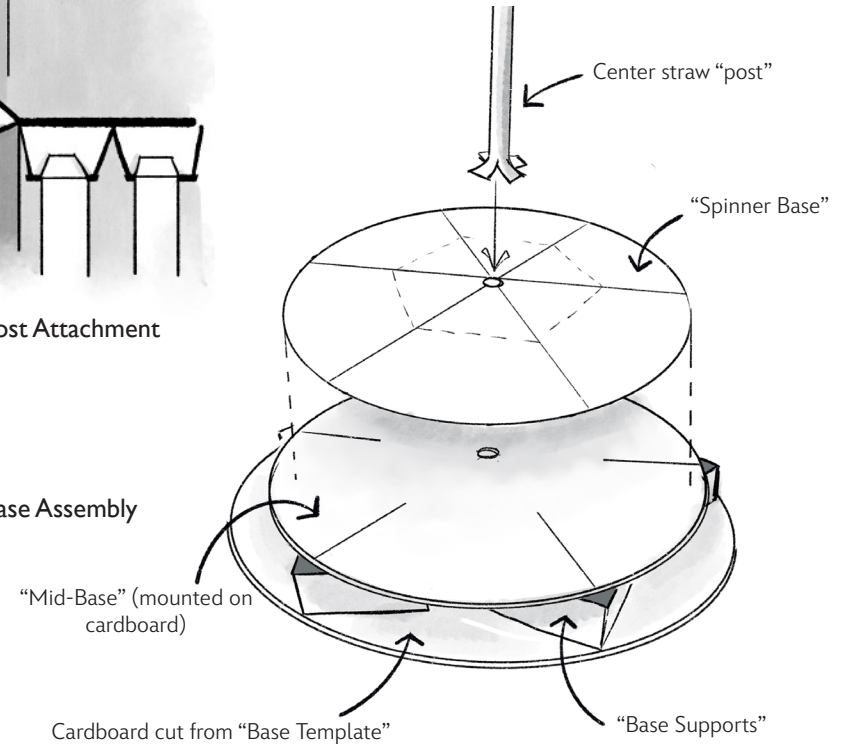


Diagram B: Post Attachment

Diagram A: Base Assembly



14. Determine where you want the front of your carousel to be. Assemble the “Carousel Banner” by gluing one side of the “Carousel Banner Tab” to the back, looping around the tent poles and gluing the other side. Repeat on opposite side.
15. Assemble “Base Hedges” to create one long strip, then wrap around your carousel base and glue together.
16. Fold and glue the “Sword & the Stone” and “Wart” pieces as indicated. For added fun, have an adult help you cut a slot in the top of the stone to allow the sword to be inserted. Once assembled, glue to “+” on “Planter Base”.
17. To attach the “Finial”, pinch the top of your center straw, and then glue both sides of the “Finial” together around the straw.
18. Assemble “The Wart” character, and place his sword in the “Sword Pedestal”.
19. Place assembled carousel on “Planter Base” and you’re ready to take a magical ride on one of Disneyland’s original attractions!



Disney Paper Parks

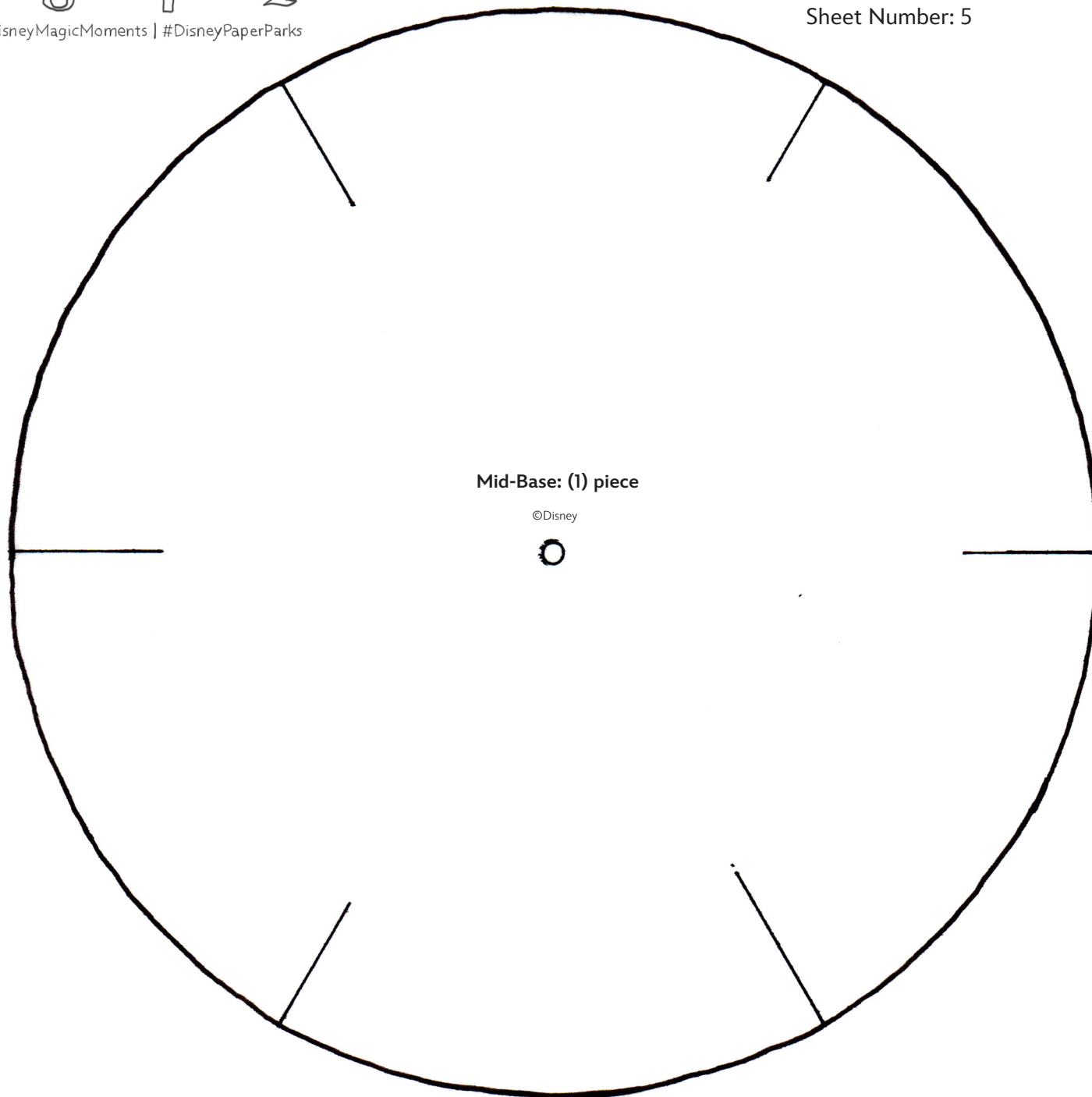
#DisneyMagicMoments | #DisneyPaperParks

KING ARTHUR CARROUSEL

Sheet Number: 4

Large Base Template: (1) piece

©Disney





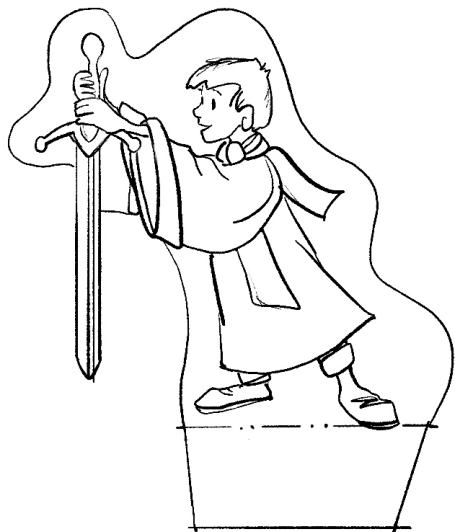
Disney Paper Parks

#DisneyMagicMoments | #DisneyPaperParks

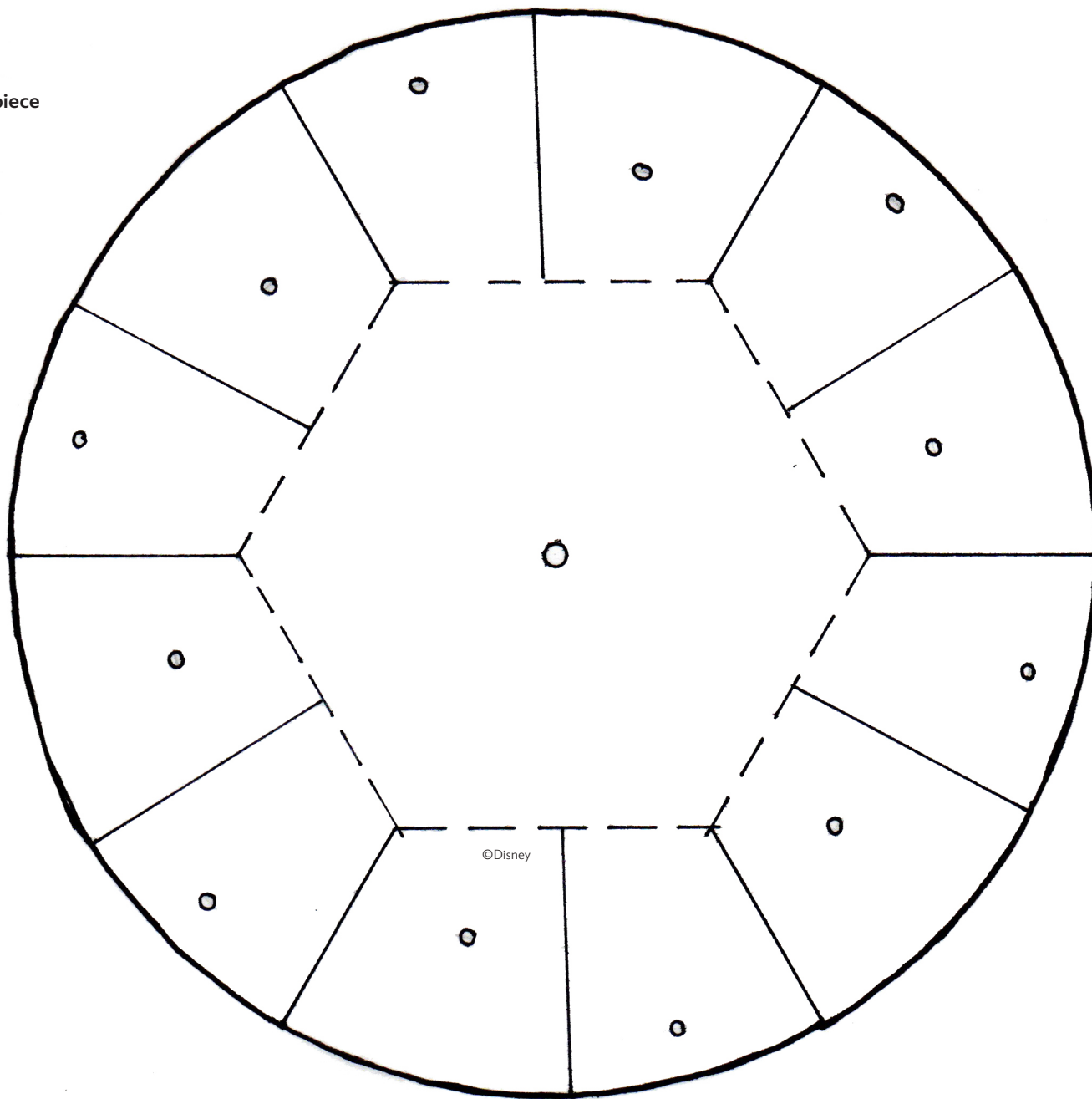
KING ARTHUR CARROUSEL

Sheet Number: 6

Spinner Base: (1) piece



"The Wart": (1) piece





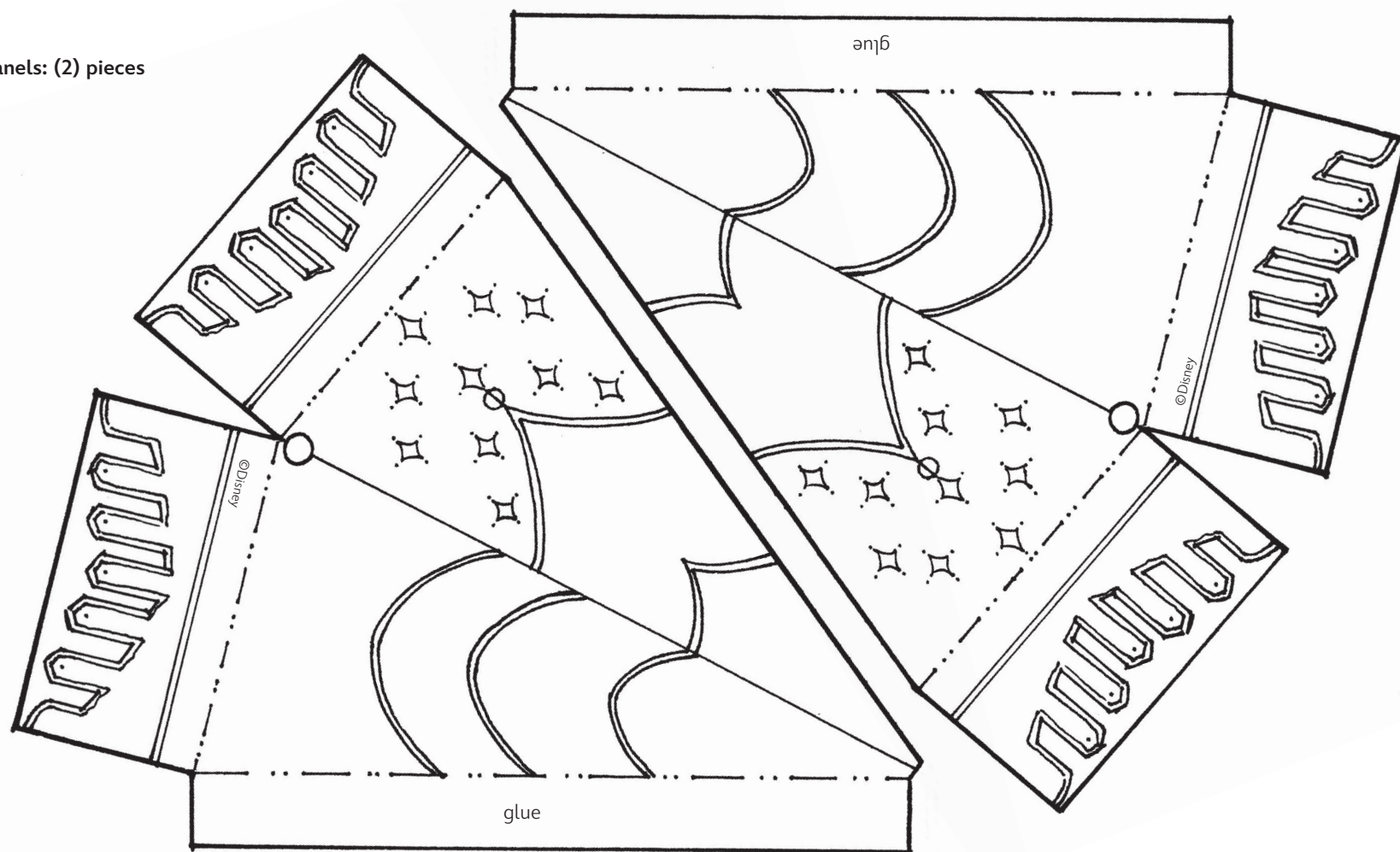
Disney Paper Parks

#DisneyMagicMoments | #DisneyPaperParks

KING ARTHUR CARROUSEL

Sheet Number: 7

Tent Roof Panels: (2) pieces





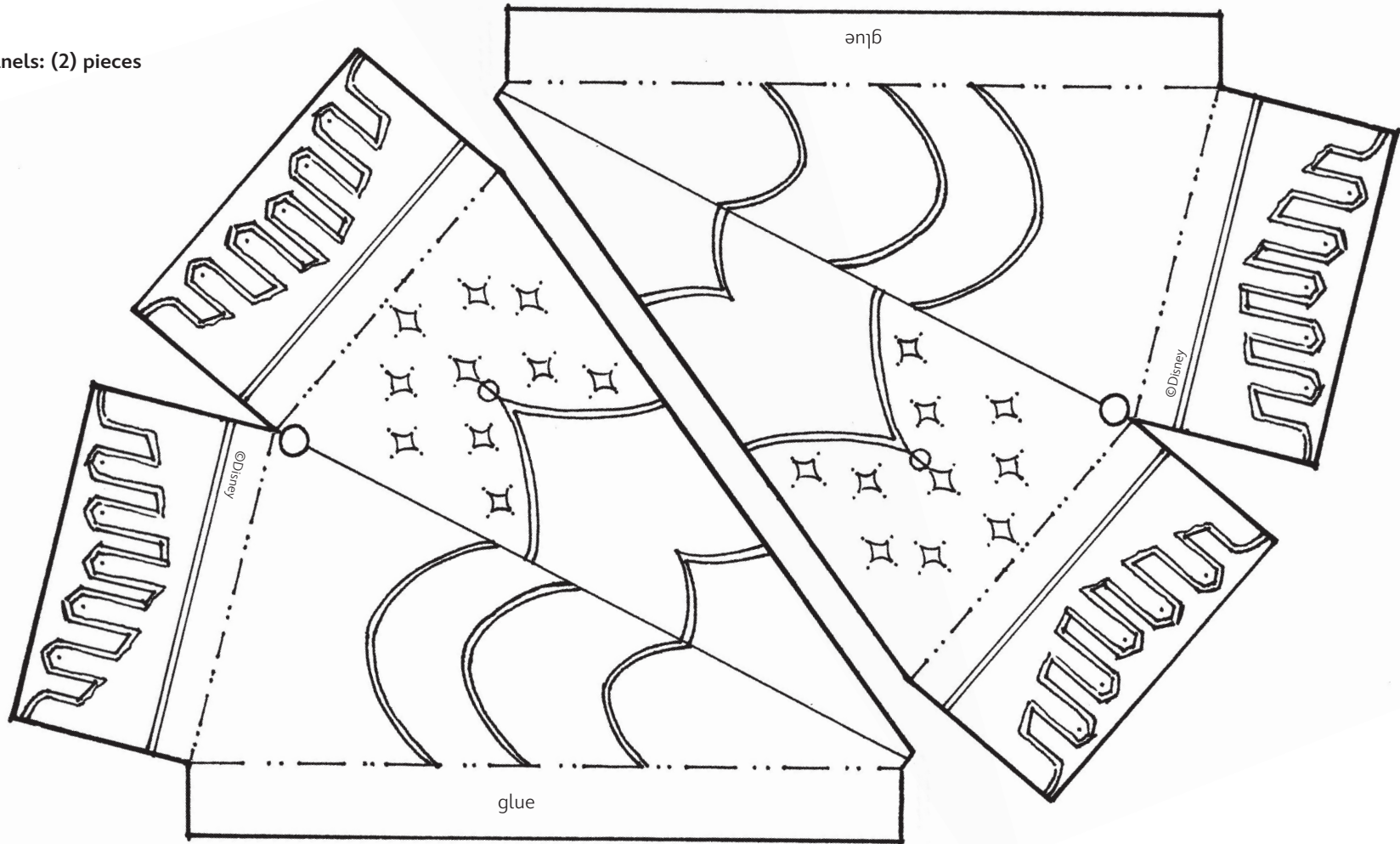
Disney Paper Parks

#DisneyMagicMoments | #DisneyPaperParks

KING ARTHUR CARROUSEL

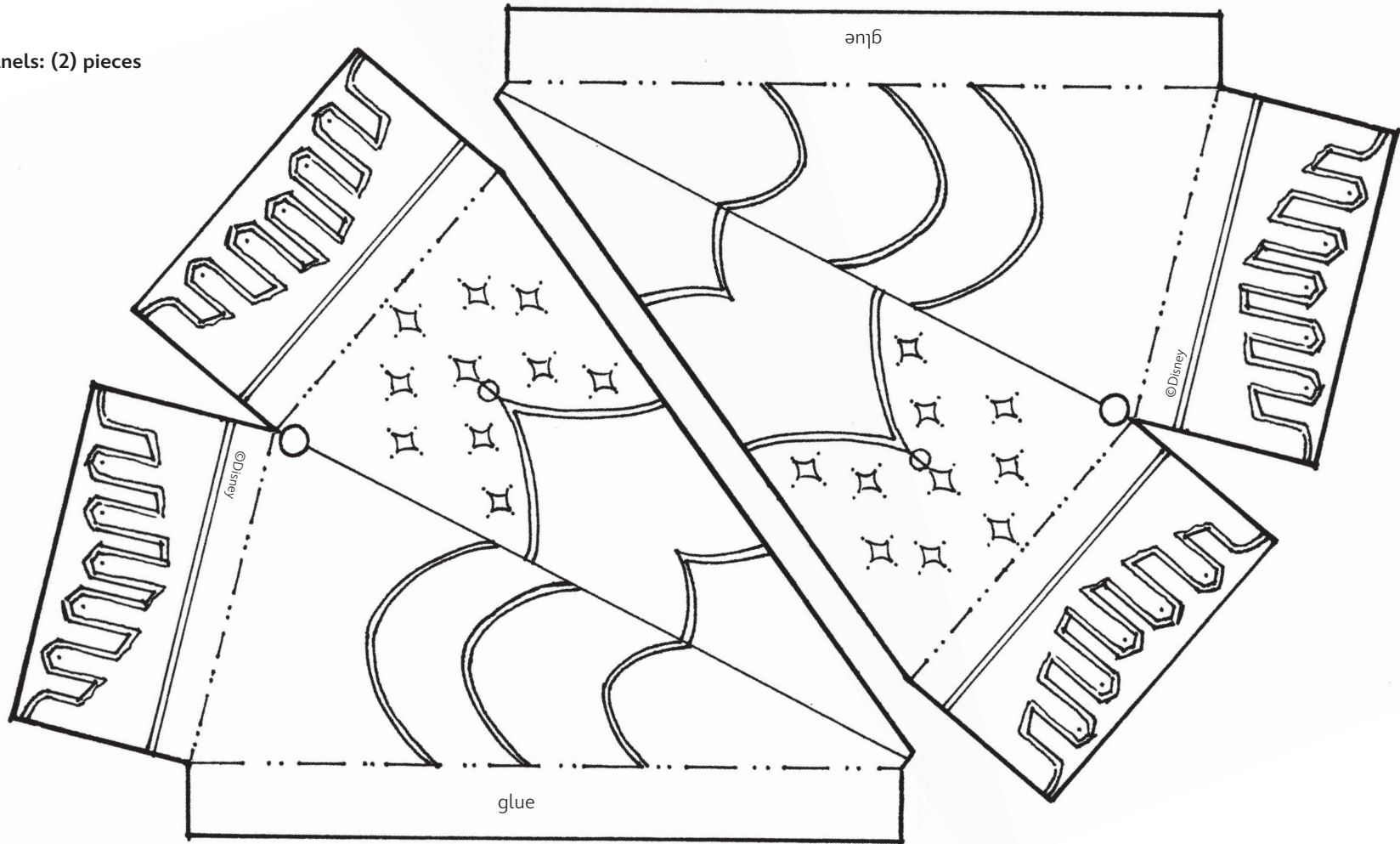
Sheet Number: 8

Tent Roof Panels: (2) pieces





Tent Roof Panels: (2) pieces





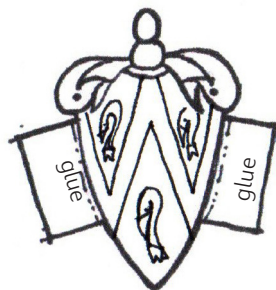
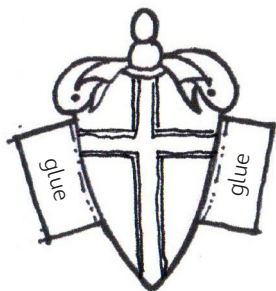
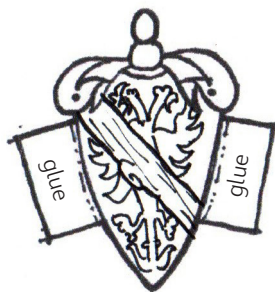
Disney Paper Parks

#DisneyMagicMoments | #DisneyPaperParks

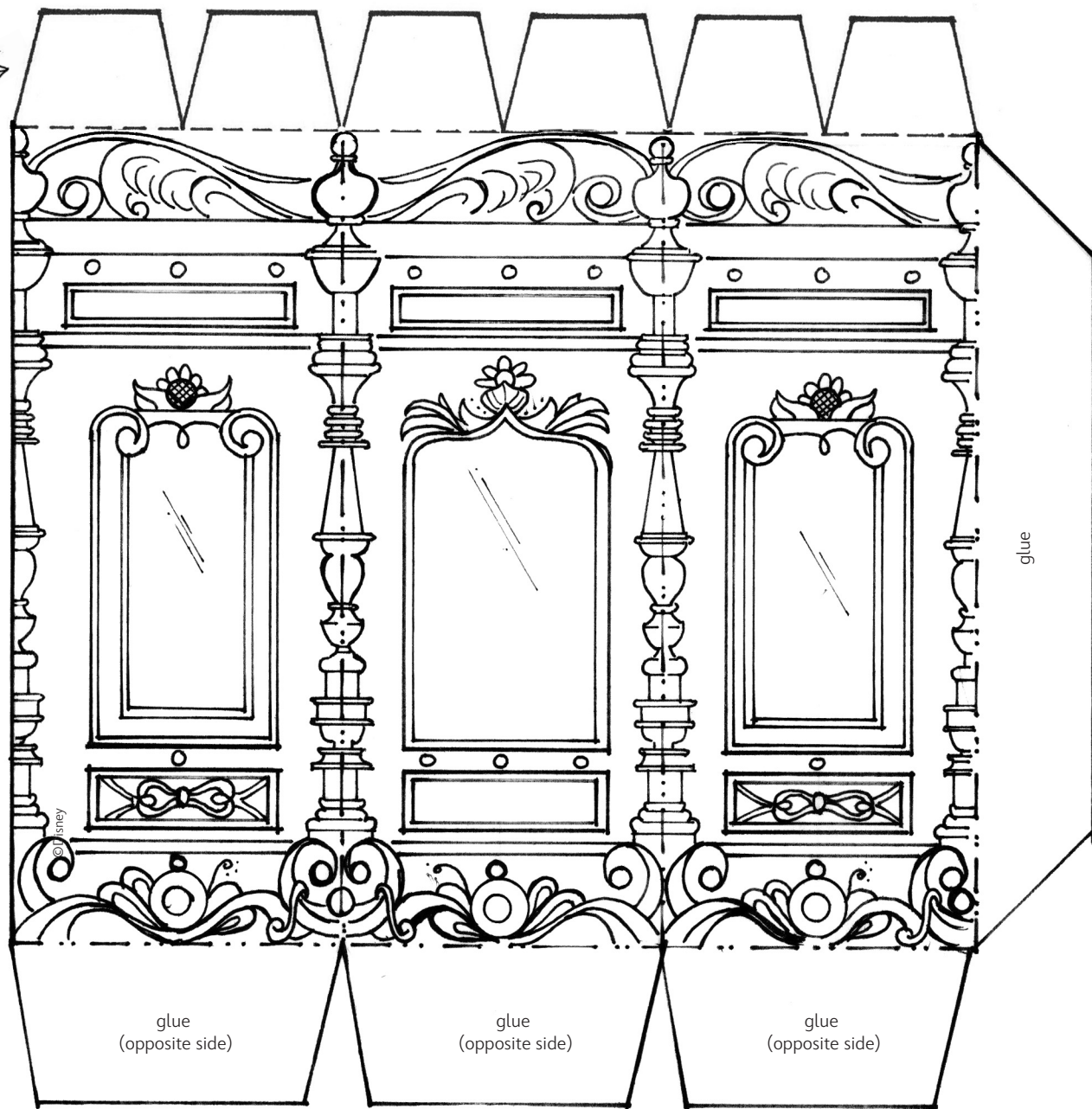
KING ARTHUR CARROUSEL

Sheet Number: 10

Tip: Glue tops of carousel horse posts to these tabs to keep them upright!



Shields: (3) pieces



Inner Column: (1) piece



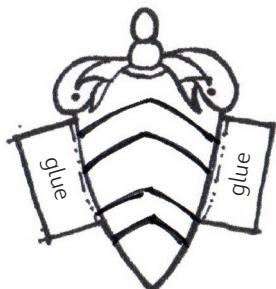
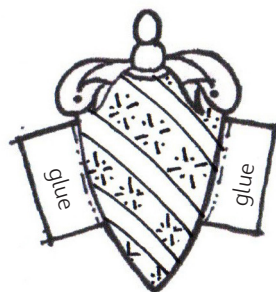
Disney Paper Parks

#DisneyMagicMoments | #DisneyPaperParks

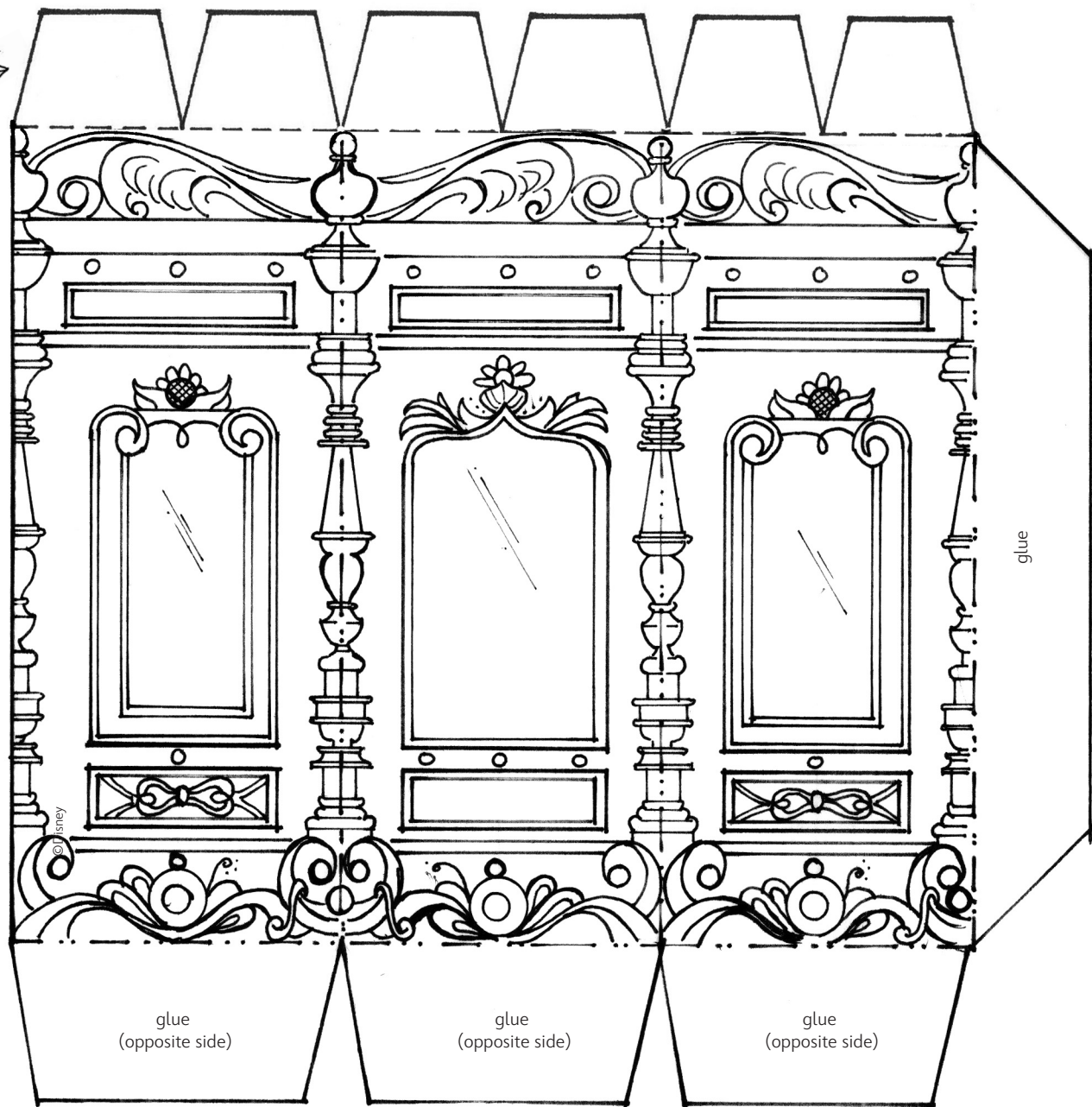
KING ARTHUR CARROUSEL

Sheet Number: 11

Tip: Glue tops of carousel horse posts to these tabs to keep them upright!



Shields: (3) pieces



Inner Column: (1) piece

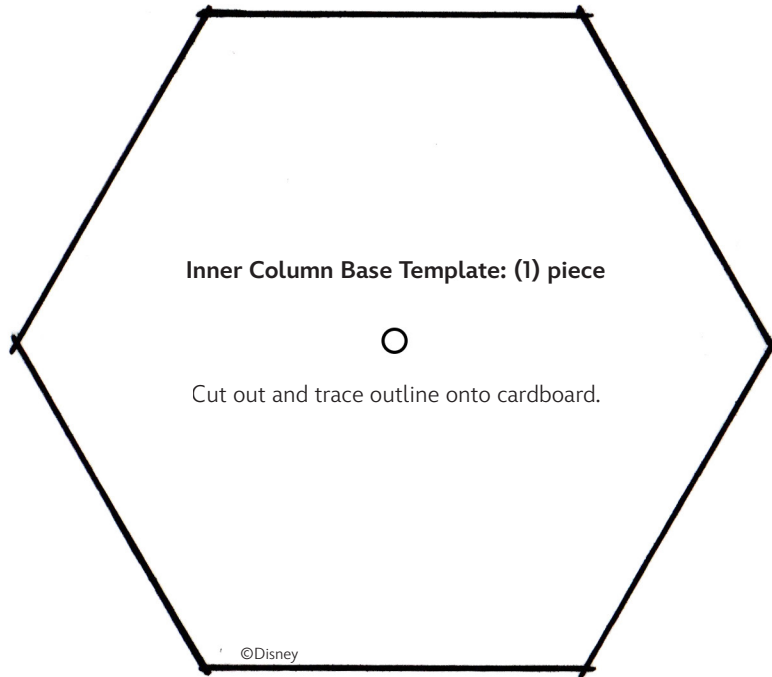


Disney Paper Parks

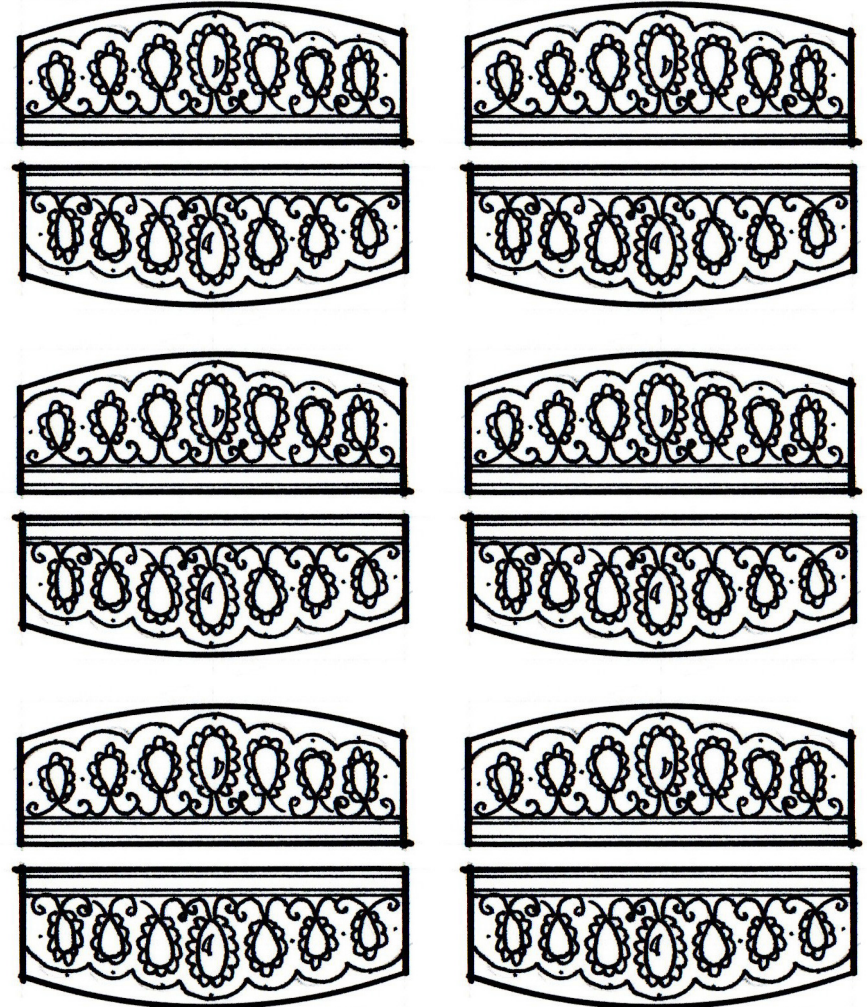
#DisneyMagicMoments | #DisneyPaperParks

KING ARTHUR CARROUSEL

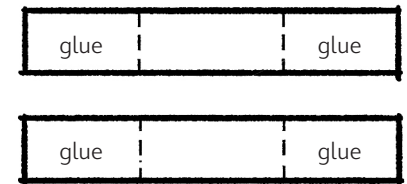
Sheet Number: 12



Tent Top Trim: (12) Pieces



Carousel Banner: 1 piece



Carousel Banner Tabs: 2 pieces



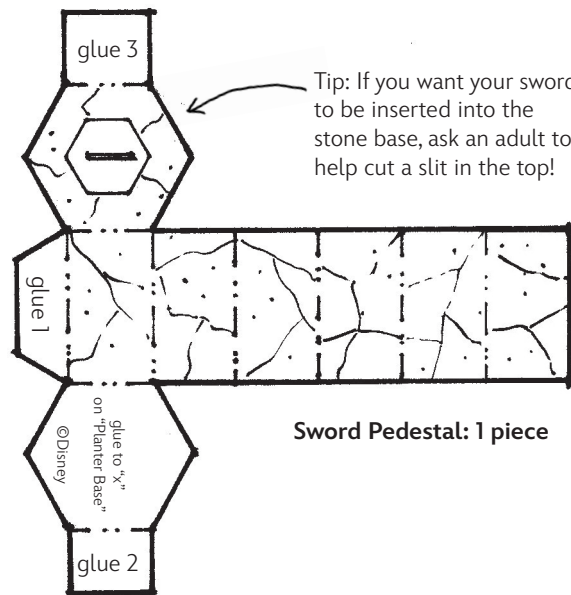
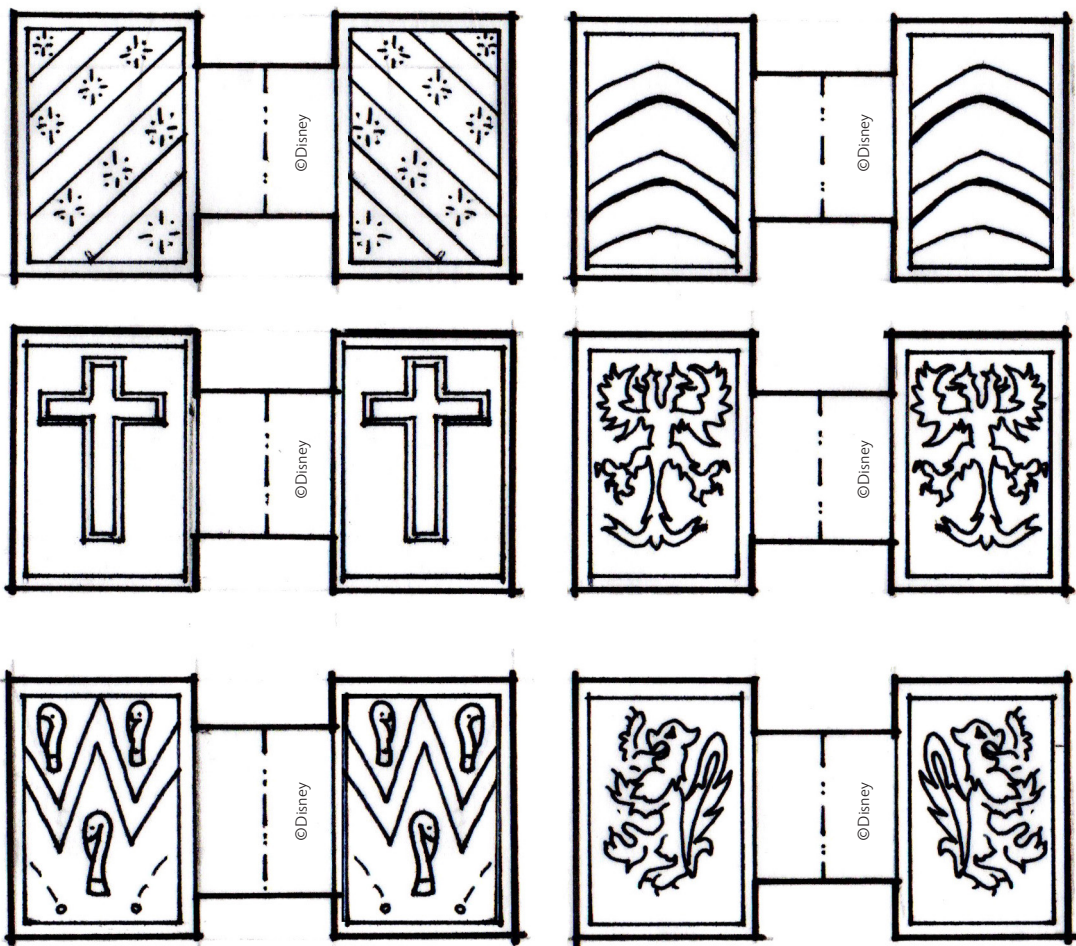
Disney Paper Parks

#DisneyMagicMoments | #DisneyPaperParks

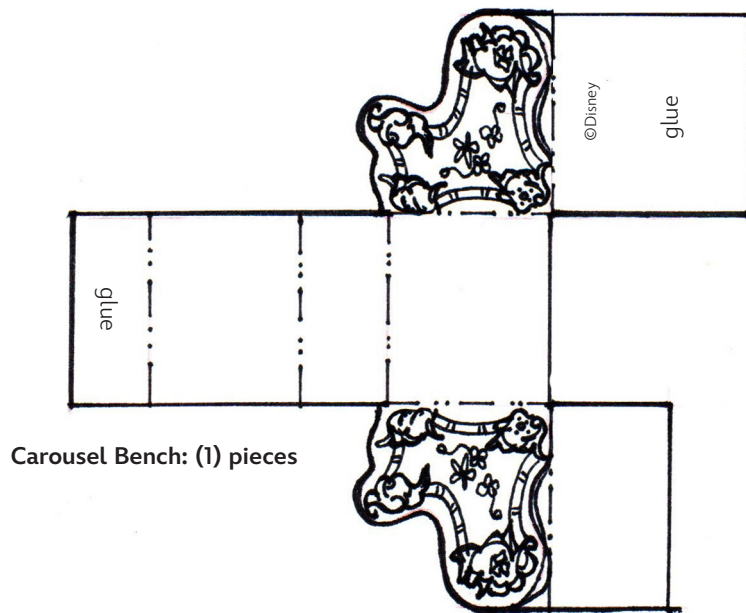
KING ARTHUR CARROUSEL

Sheet Number: 13

Flags: (6) pieces



Sword Pedestal: 1 piece



Carousel Bench: (1) pieces



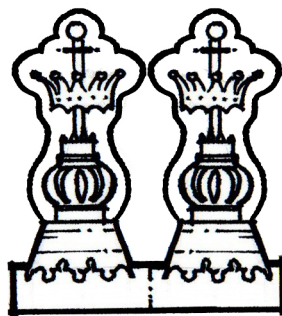
Disney Paper Parks

#DisneyMagicMoments | #DisneyPaperParks

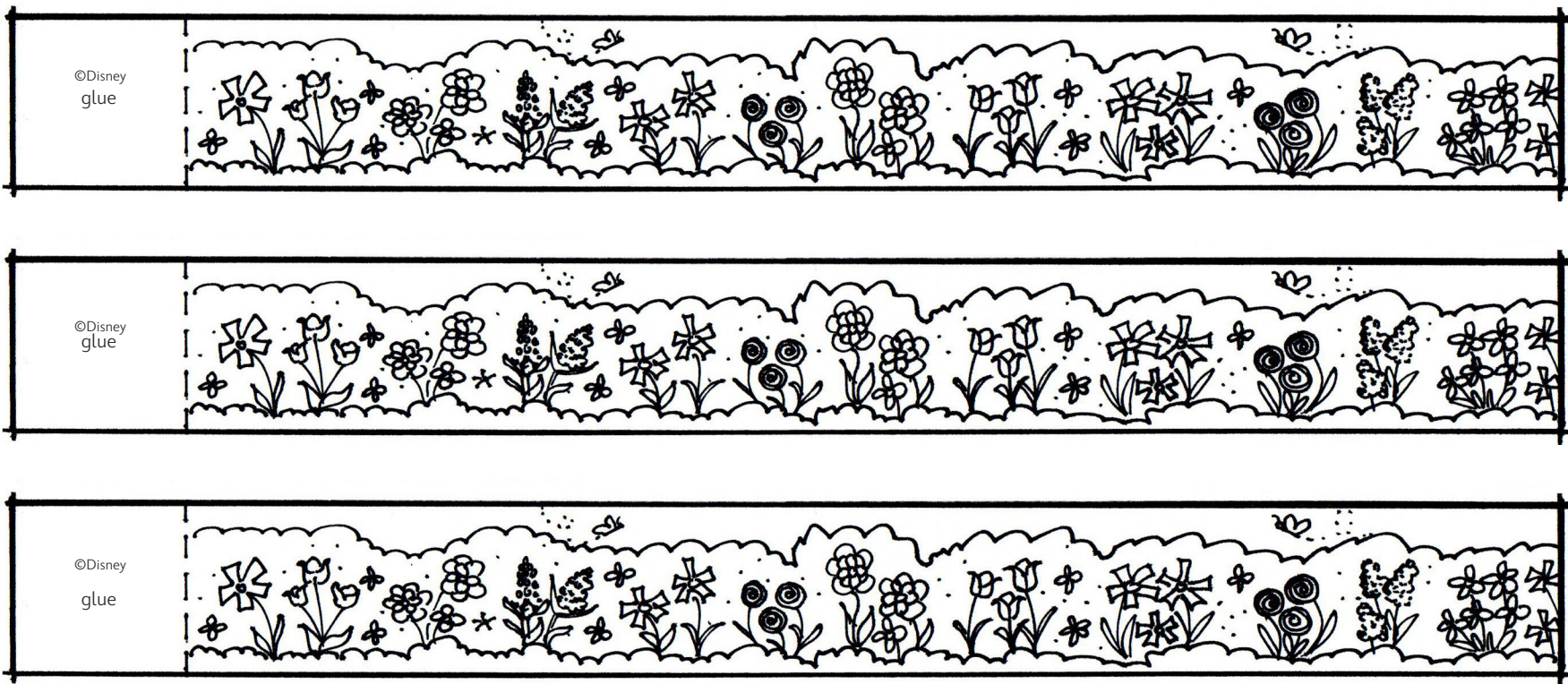
KING ARTHUR CARROUSEL

Sheet Number: 14

Finial: (1) piece



Base Support Template: (1) piece



Base Hedge: (3) pieces

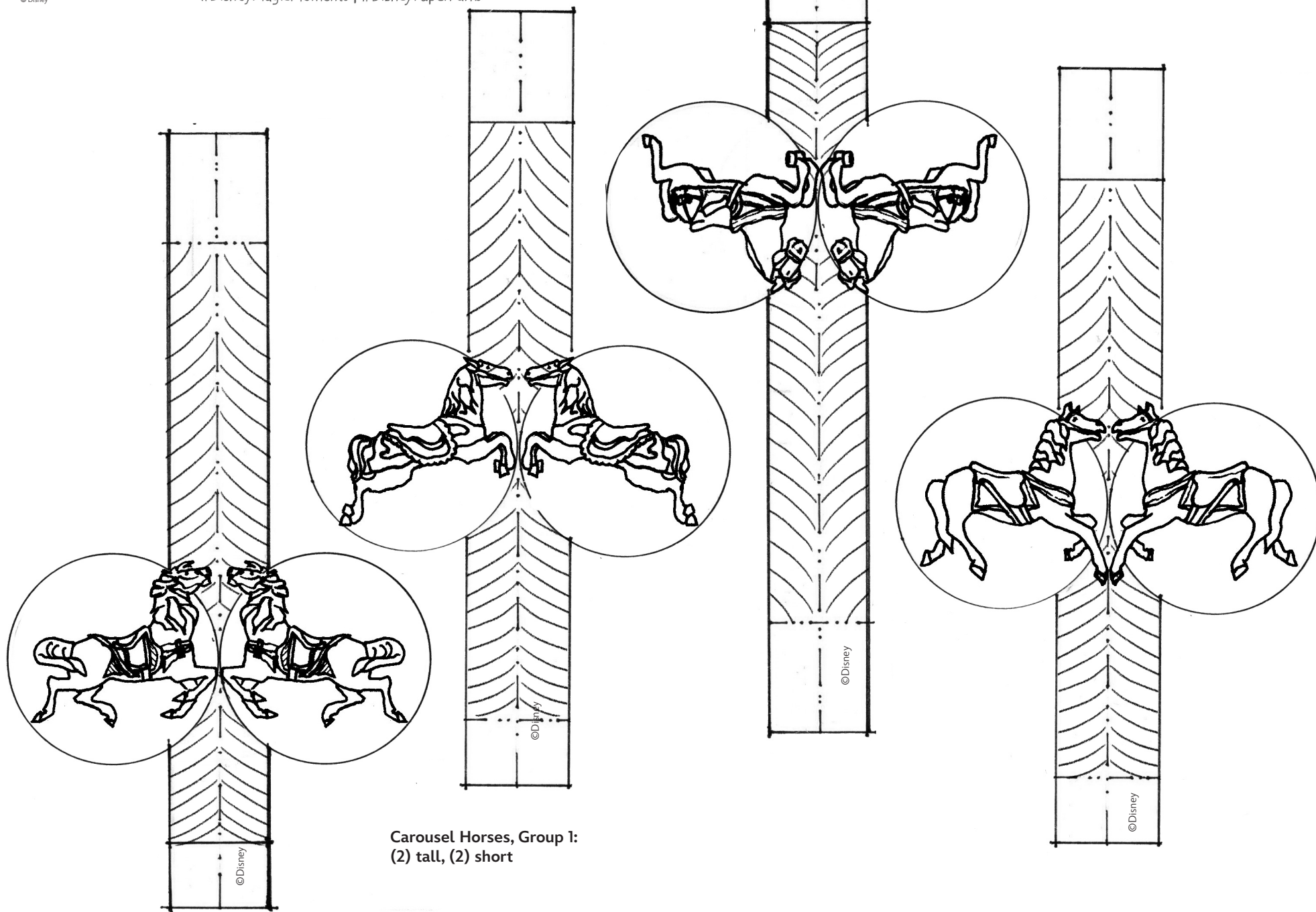


Disney Paper Parks

#DisneyMagicMoments | #DisneyPaperParks

KING ARTHUR CARROUSEL

Sheet Number: 15



Carousel Horses, Group 1:
(2) tall, (2) short

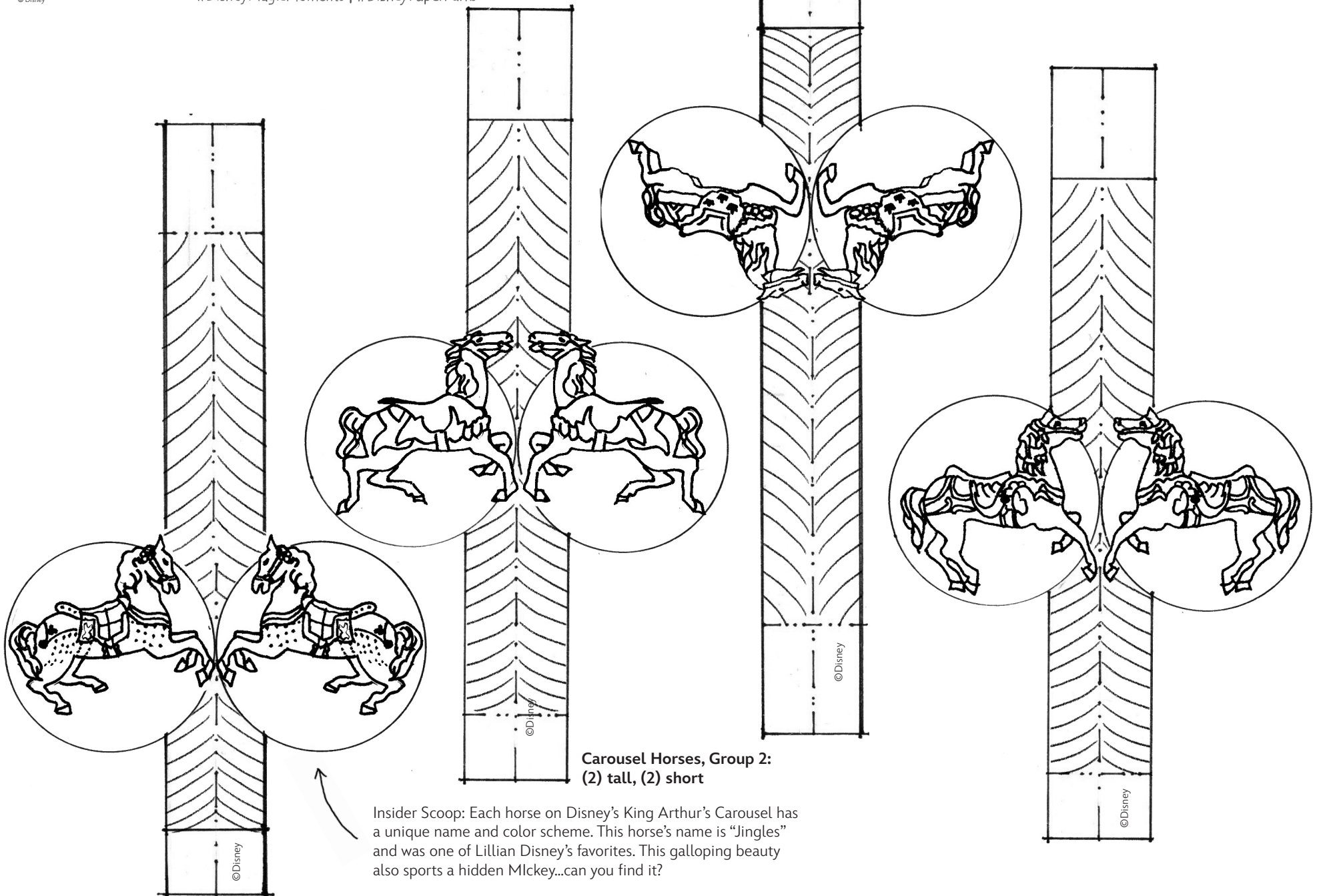


Disney Paper Parks

#DisneyMagicMoments | #DisneyPaperParks

KING ARTHUR CARROUSEL

Sheet Number: 16



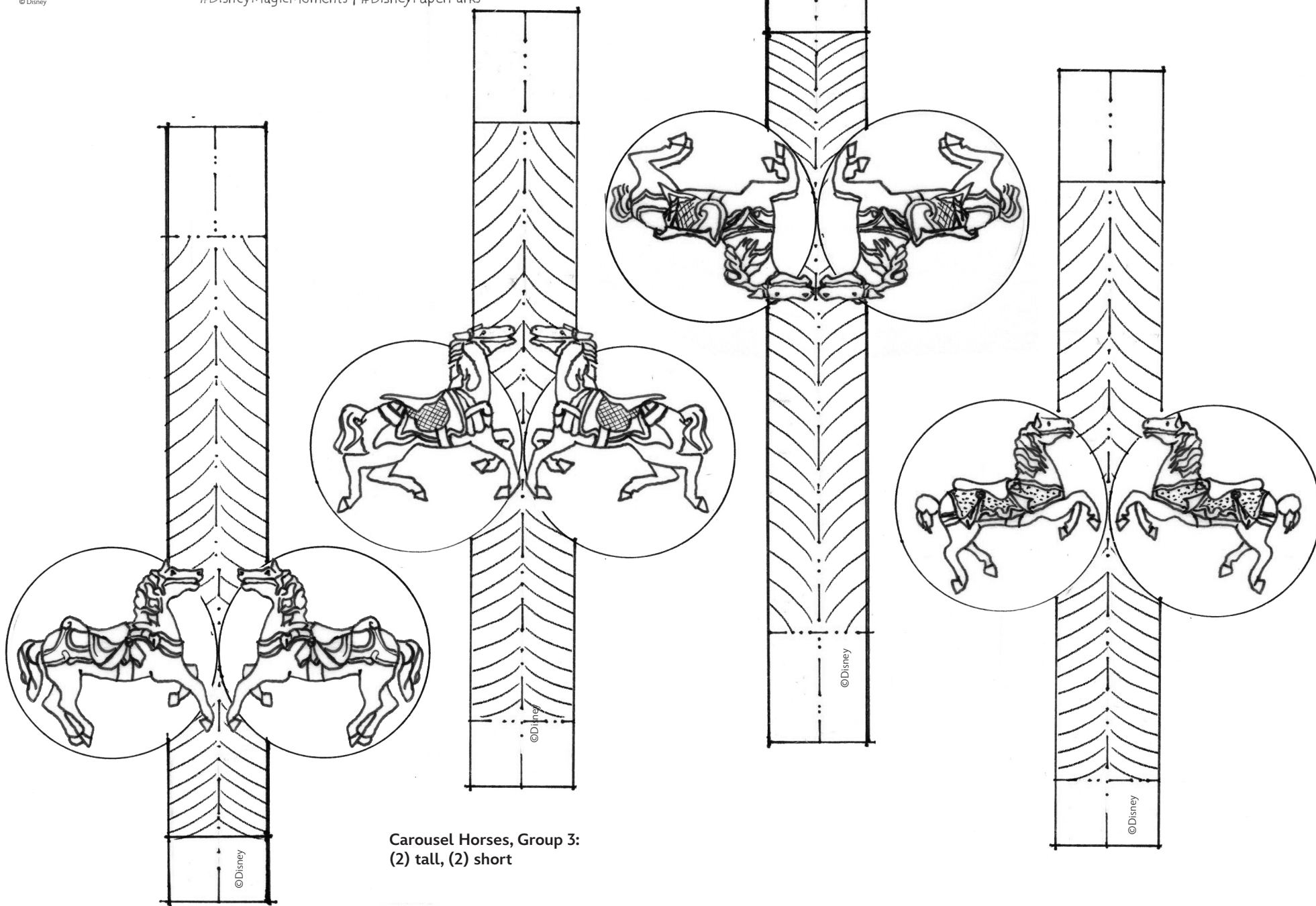


Disney Paper Parks

#DisneyMagicMoments | #DisneyPaperParks

KING ARTHUR CARROUSEL

Sheet Number: 17



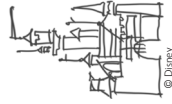
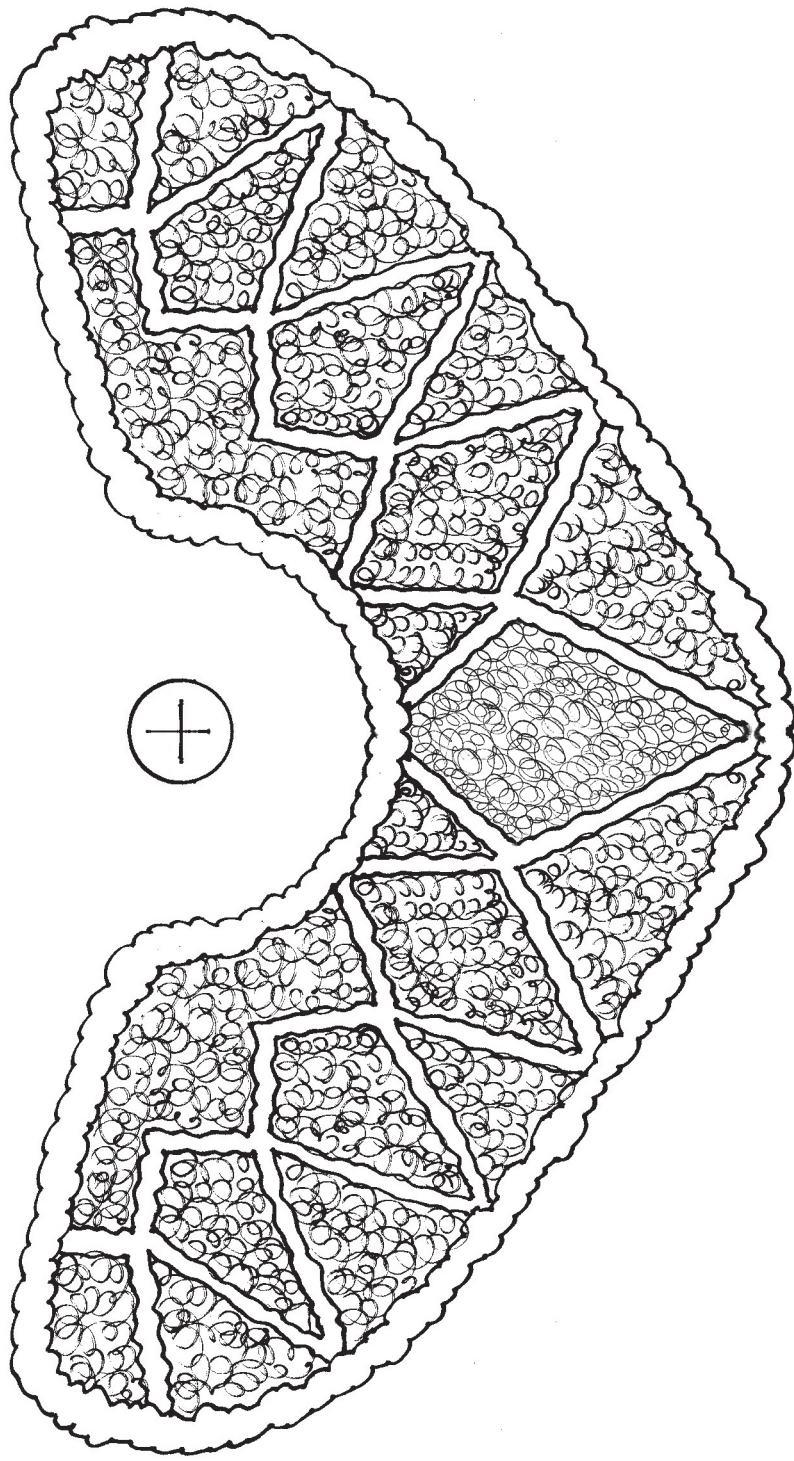
Carousel Horses, Group 3:
(2) tall, (2) short

KING ARTHUR CARROUSEL

Sheet Number: 18

Planter Base: (1) piece
*No Cutting Required

PLACE FINISHED CARROUSEL HERE!



Disney Paper Parks

#DisneyMagicMoments | #DisneyPaperParks



Disney Paper Parks

#DisneyMagicMoments | #DisneyPaperParks

HISTORY

Transportation is always a highlight in a magical day at Disneyland. No visit is complete without a leisurely ride on a horse drawn trolley down Main Street. The beautiful trolley and friendly horses have been clickety - clopping down main street since the parks opening day in 1955.

The trolleys transport visitors along a route that travels between Sleeping Beauty Castle and the Disneyland Train Station. The Disneyland horses are considered cast members, and each of the horses has its own oversize cast member name tag. How adorable!

Have fun coloring and playing with your very own Disney horse and trolley!

MATERIALS



Glue



Scissors



Crayons

GUIDE

Lines

- Valley fold, fold in front
- Mountain fold, fold behind
- _____ Cut

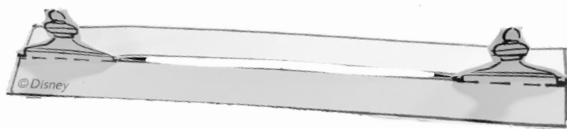


image 3

MAIN STREET TROLLEY & EXTRAS

Sheet Number: 1 (3 pages total)

INSTRUCTIONS

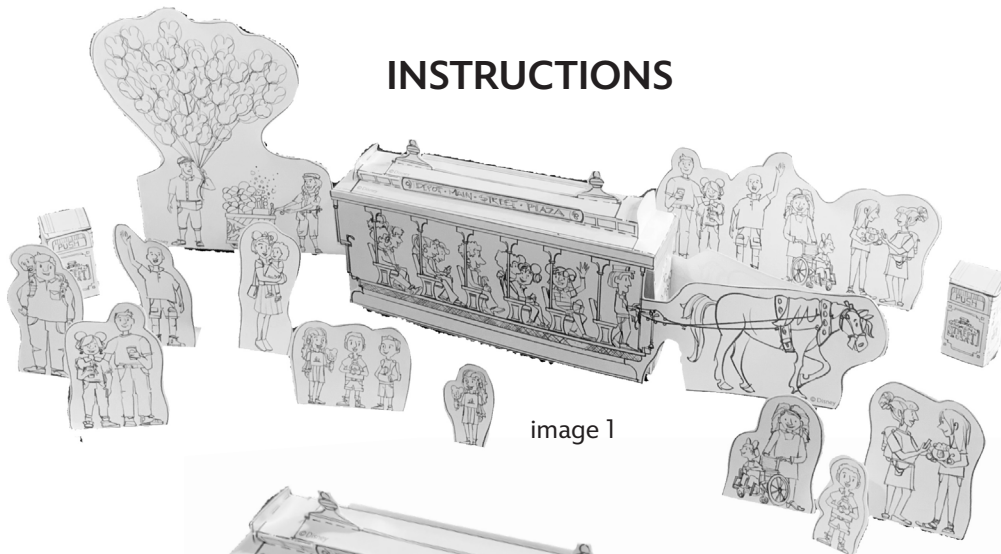


image 1

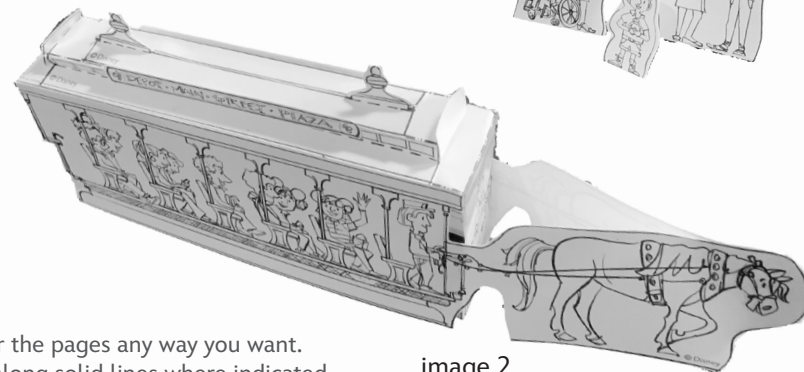


image 2

1. Color the pages any way you want.
2. Cut along solid lines where indicated.
3. Fold tabs and pieces according to Guide.
4. Assemble and glue the roof parts first, before assembling the Trolley. Assemble piece 3 by gluing the tabs to the top of the trolley as shown in the image 2.
5. Assemble piece 5 by gluing the finials together, but leaving the bottom strips. Glue the bottom strips to the roof as shown in the image 3 and 2.
6. Glue signs, pieces 4a and 4b to both sides of the trolley windows, as shown in the image.
7. Assemble piece 1 to make the horse drawn Trolley. Use the glue stick to glue the back and front tabs to the inside of the side flaps. Glue only the head portion of the horse parts together as shown in the image.
8. Assemble piece 2 by gluing the tabs to the back of the trolley.
9. Assemble piece 6 by gluing the tabs to create the waste receptacles.
10. No assembly required for the park guests. Feel free to draw yourself, your family and friends. All can enjoy Disney Paper Parks!

Please Note: When cutting with scissors and working with any of the materials listed above, adult participation and supervision is recommended.

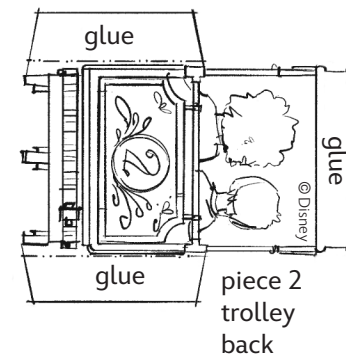
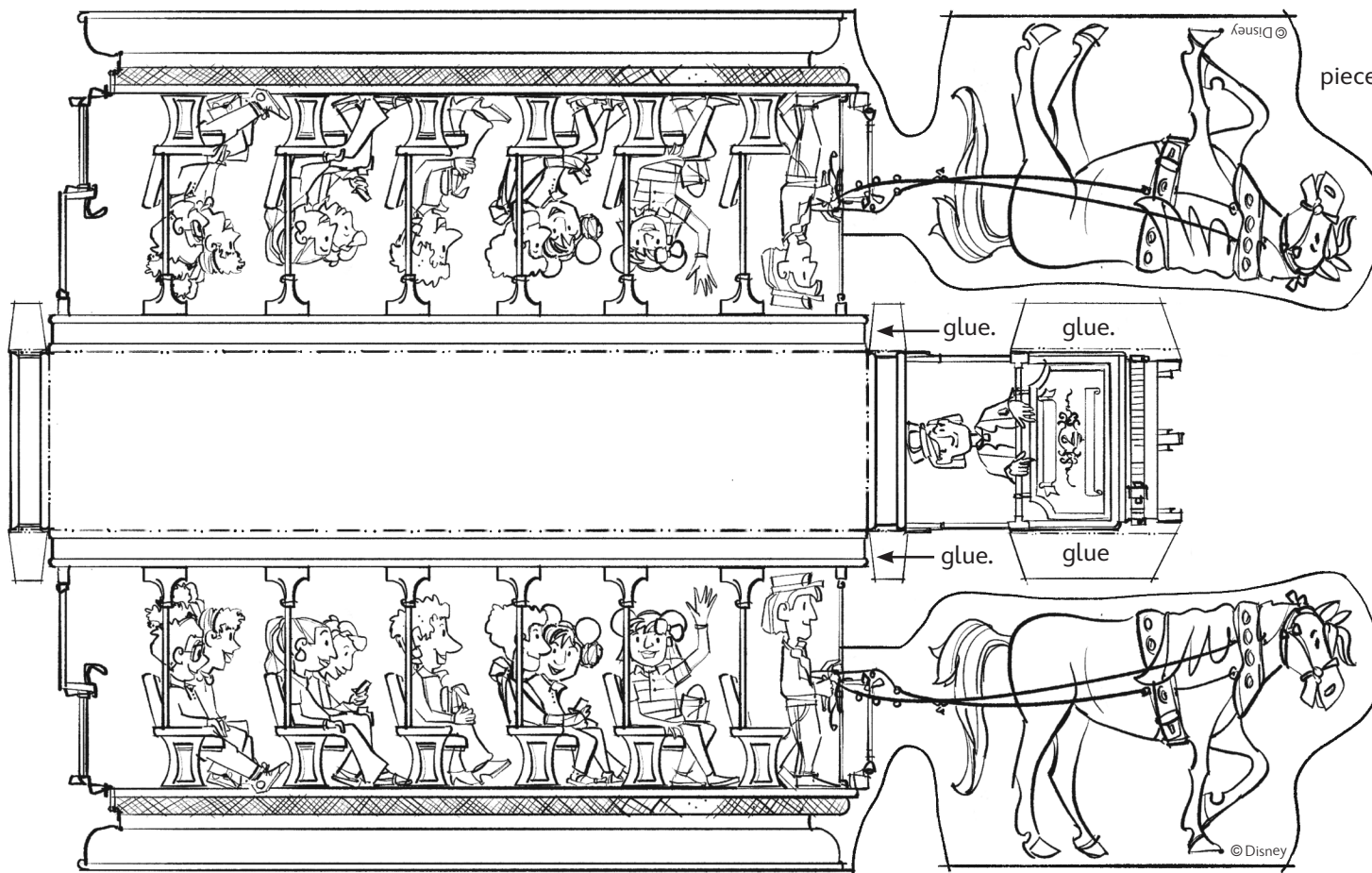
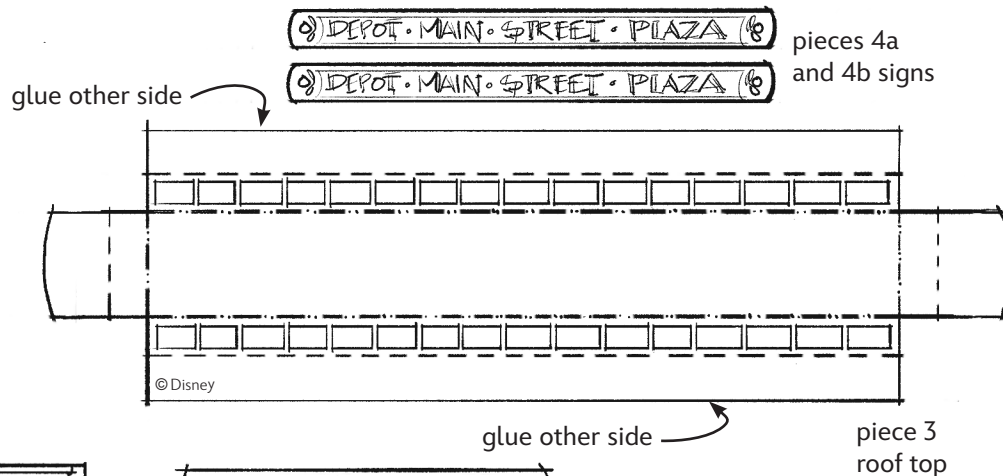
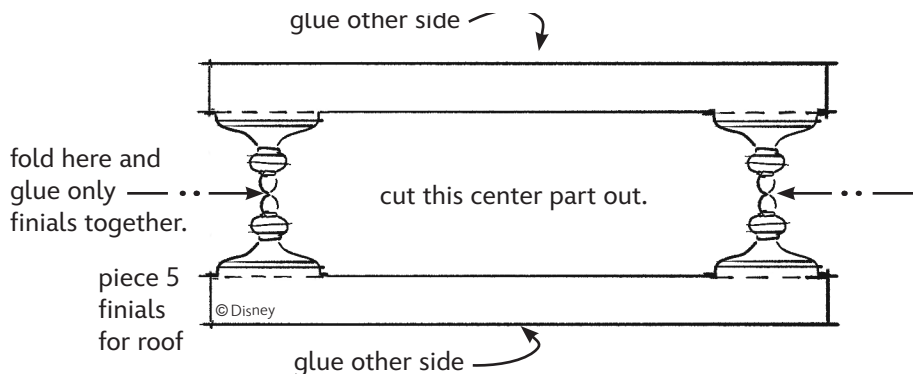


Disney Paper Parks

#DisneyMagicMoments | #DisneyPaperParks

MAIN STREET TROLLEY & EXTRAS

Sheet Number: 2



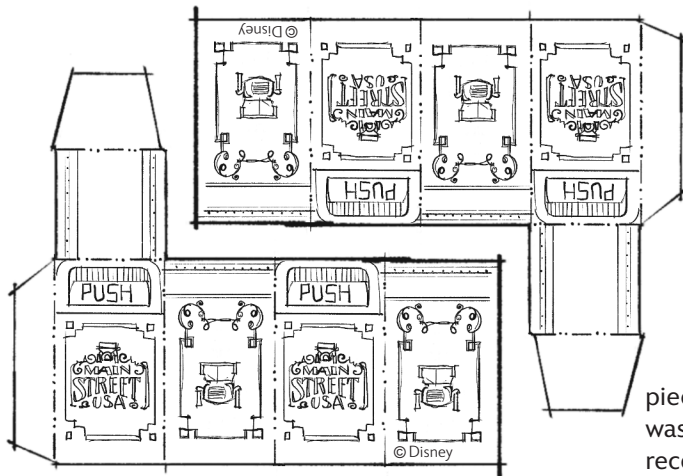


Disney Paper Parks

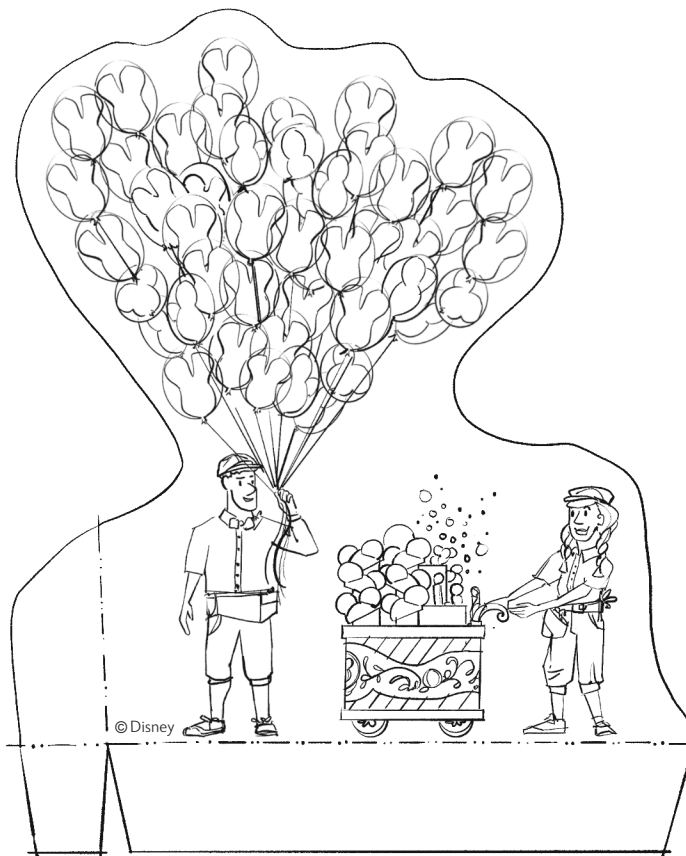
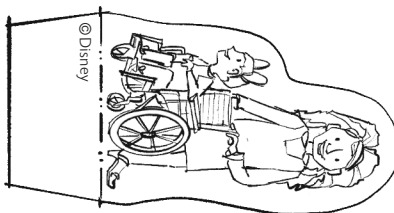
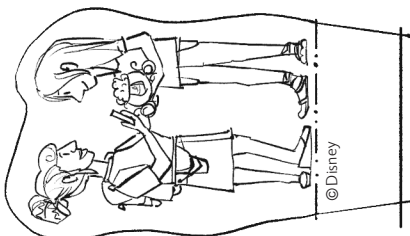
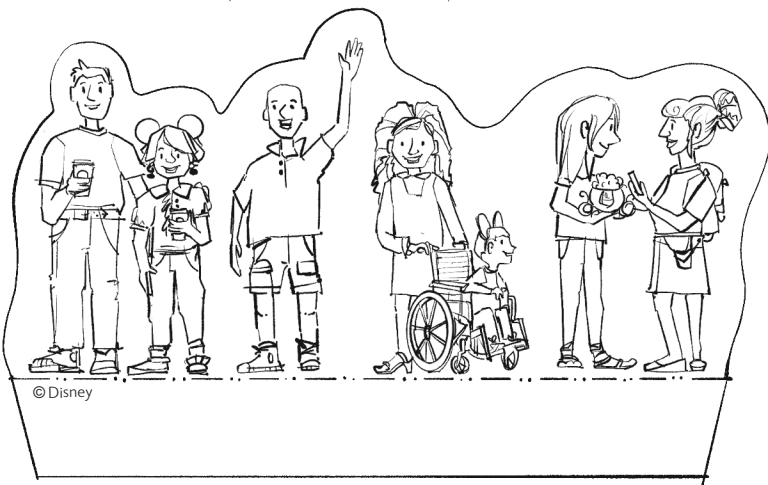
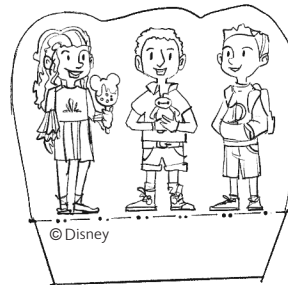
#DisneyMagicMoments | #DisneyPaperParks

MAIN STREET TROLLEY & EXTRAS

Sheet Number: 3



piece 6
waste
receptacle.





Disney Paper Parks

#DisneyMagicMoments | #DisneyPaperParks

FANTASYLAND TREES

Sheet Numbers: 1, 2, 3, 4, 5, 6

HISTORY

Walt Disney viewed the Disneyland experience as creating a completely involving and realistic setting in which guests were a part of an encompassing show.

“To achieve the right effect,” Walt said, “our Disneyland landscape architects combined their talents with those of builders and maintenance personnel and created a believable and authentic scene of nature’s own design.”

With approximately 18,000 trees and 125,000 shrubs, the Disneyland Resort is considered one of the largest gardens in Southern California.

All of the species here are used in the Disneyland Fantasyland area.

MATERIALS



Glue



Scissors



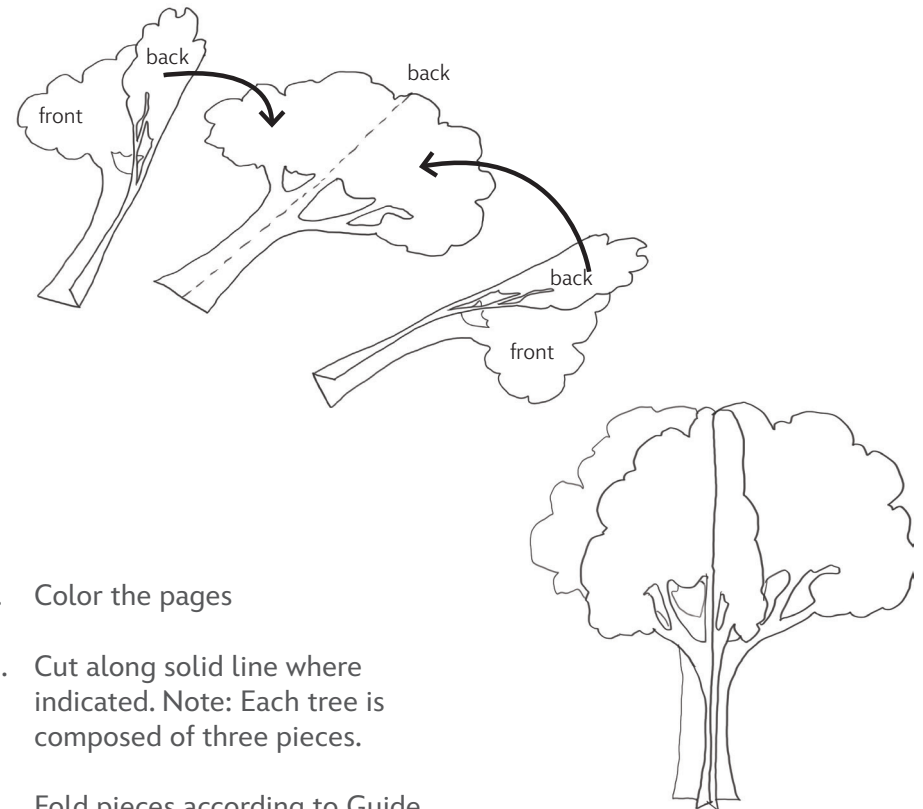
Crayons

GUIDE

Lines

- Valley fold, fold in front
- - - - - Mountain fold, fold behind
- Cut
- X-ray or guide line.

INSTRUCTIONS



1. Color the pages
2. Cut along solid line where indicated. Note: Each tree is composed of three pieces.
3. Fold pieces according to Guide.
4. *Tip: it will be easier to fold the second tree after the other two are glued to it.
5. Glue one tree to the left half of another.
6. Glue the third tree to the right half. Make sure to keep the bottoms even!
7. Stand up the trees by fanning out the parts. Place in the model where the trees have been shown in the plan. Make as many as you'd like to use throughout your Paper Park!

Please Note: When cutting with scissors and working with any of the materials listed above, adult participation and supervision is recommended.

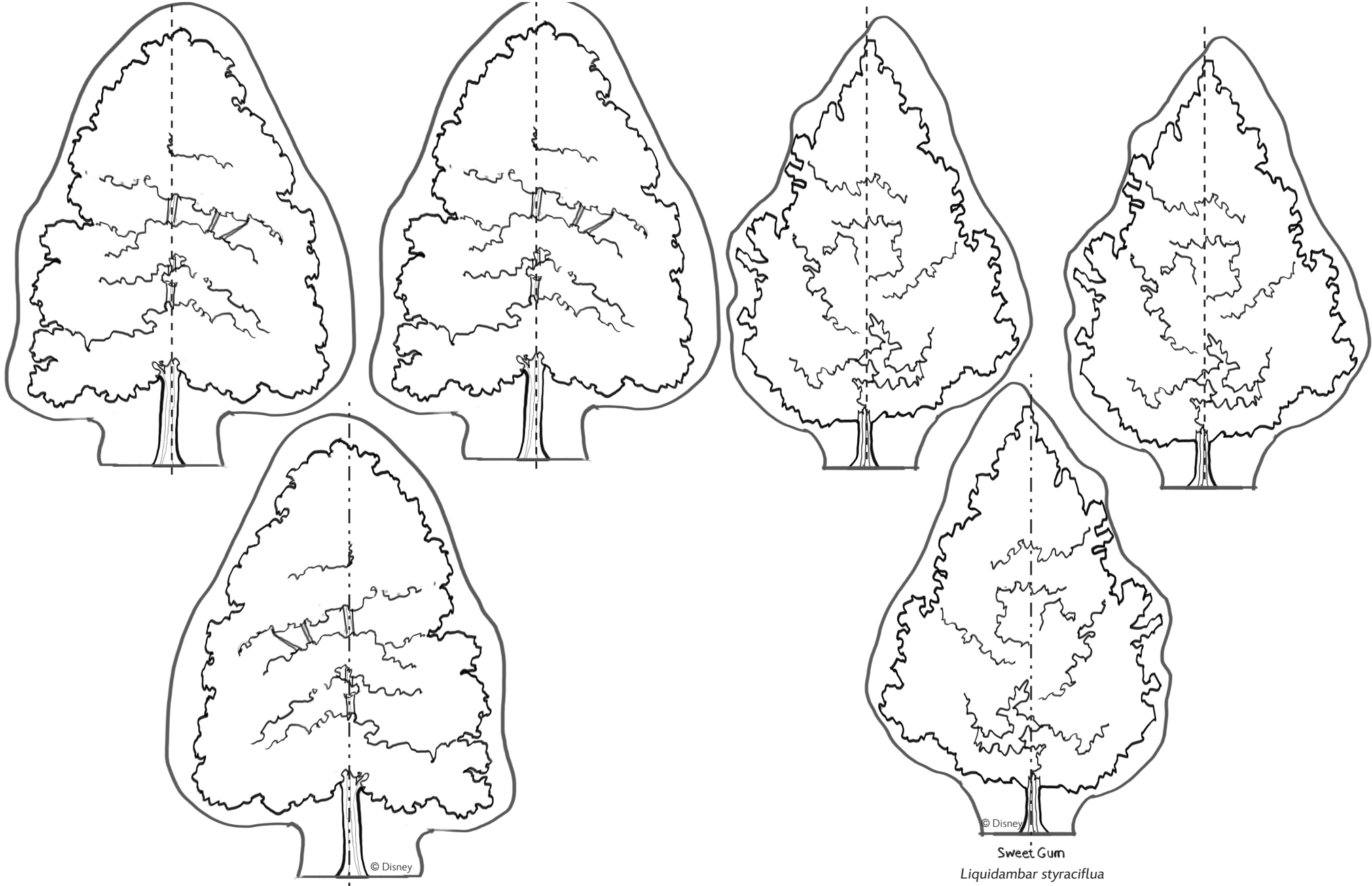


Disney Paper Parks

#DisneyMagicMoments | #DisneyPaperParks

FANTASYLAND TREES

Sheet Number: 1



Costa Rican Holly

Olmediella betschleriana

Sweet Gum

Liquidambar styraciflua

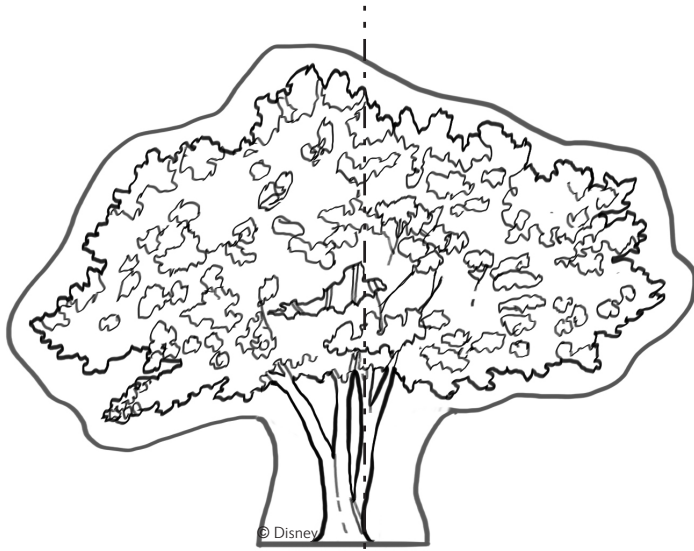


Disney Paper Parks

#DisneyMagicMoments | #DisneyPaperParks

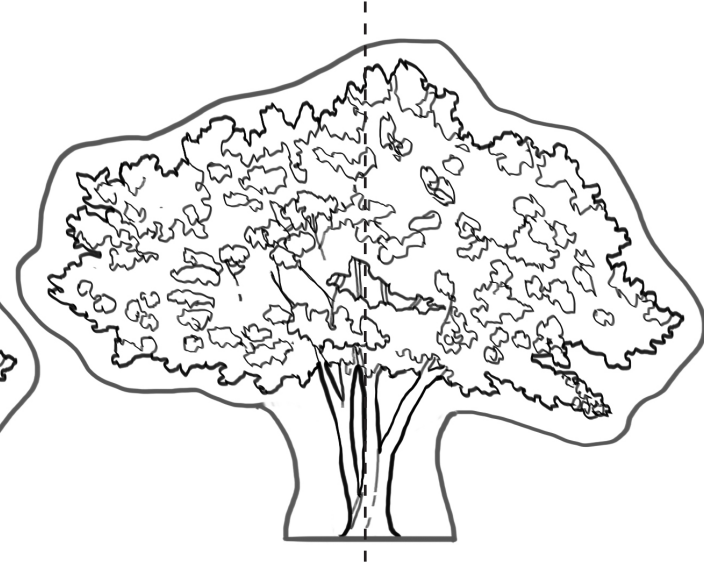
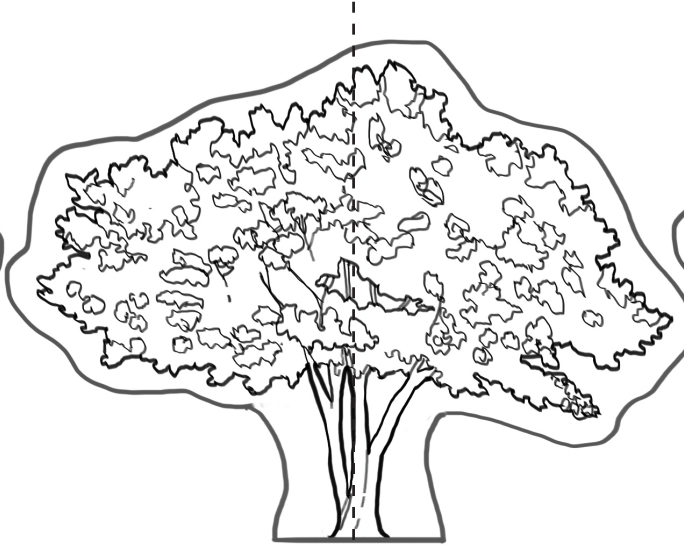
FANTASYLAND TREES

Sheet Number: 2



© Disney

Crepe Myrtle
Lagerstroemia indica



© Disney

Chinese Elm
Ulmus parvifolia



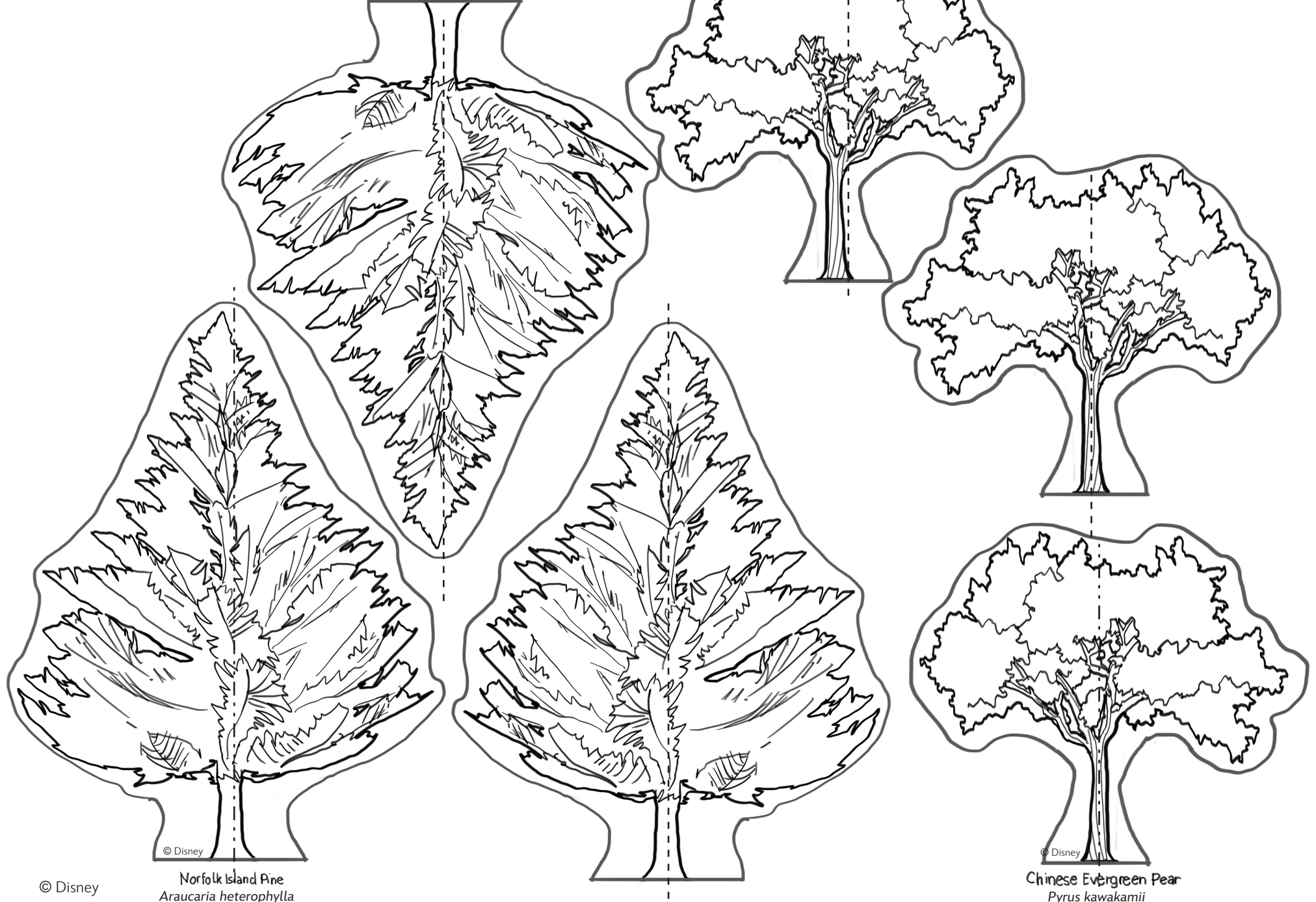


Disney Paper Parks

#DisneyMagicMoments | #DisneyPaperParks

FANTASYLAND TREES

Sheet Number: 3



© Disney

Norfolk Island Pine
Araucaria heterophylla

© Disney

© Disney

Chinese Evergreen Pear
Pyrus kawakamii

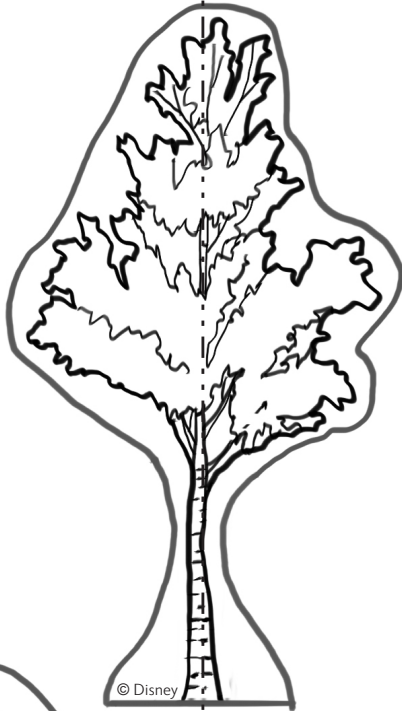


Disney Paper Parks

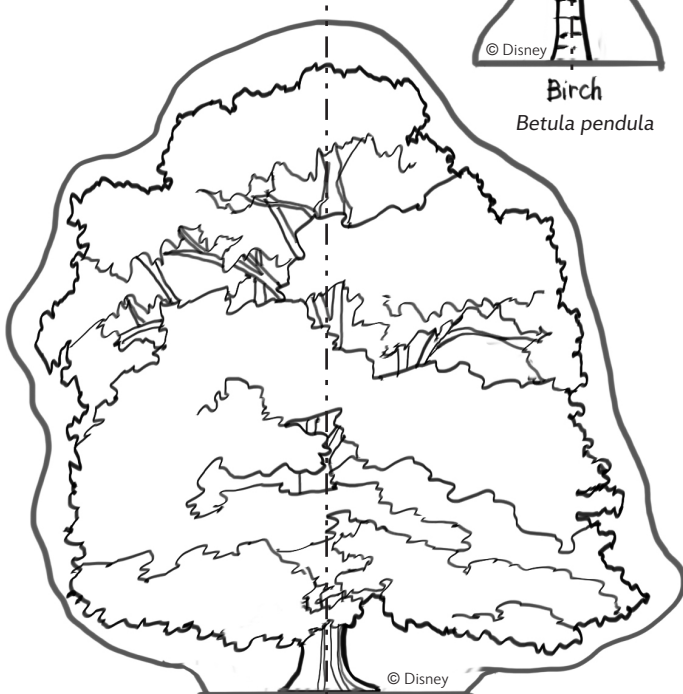
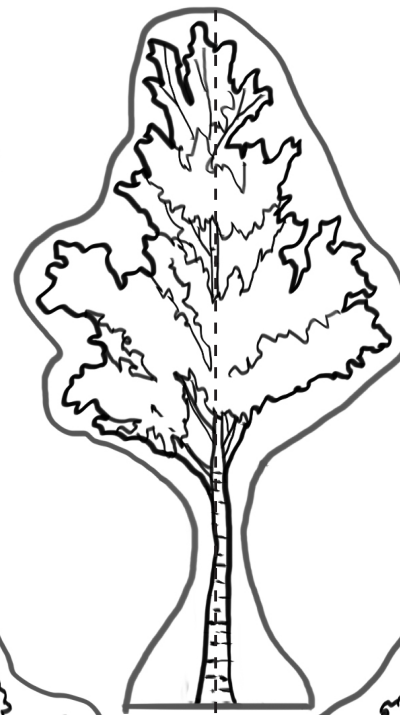
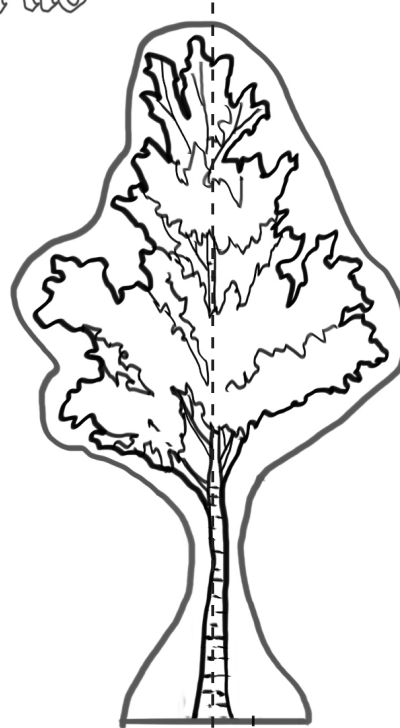
#DisneyMagicMoments | #DisneyPaperParks

FANTASYLAND TREES

Sheet Number: 4



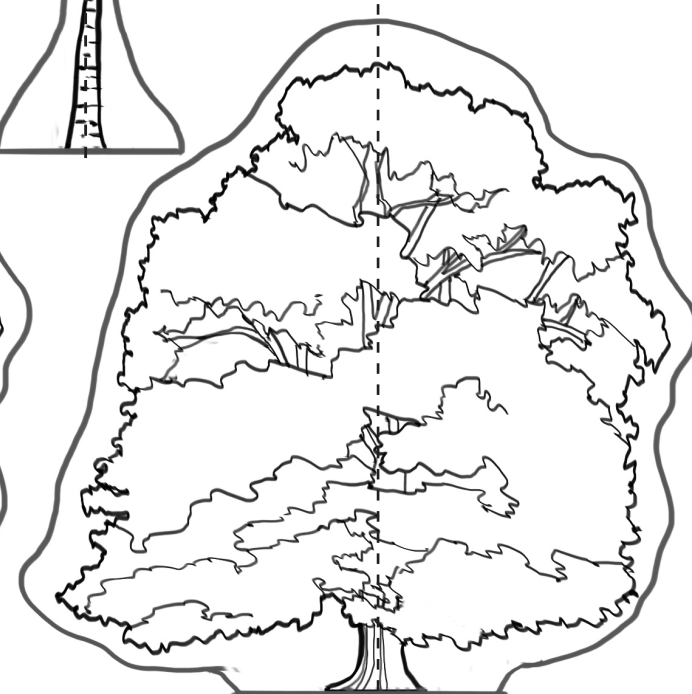
Birch
Betula pendula



English Oak



Quercus robur



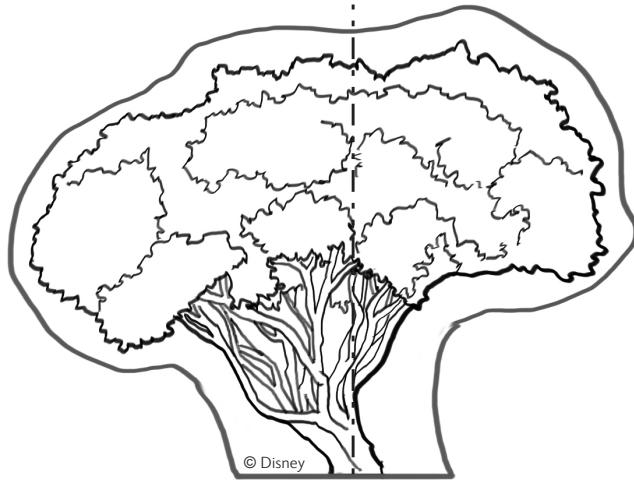


Disney Paper Parks

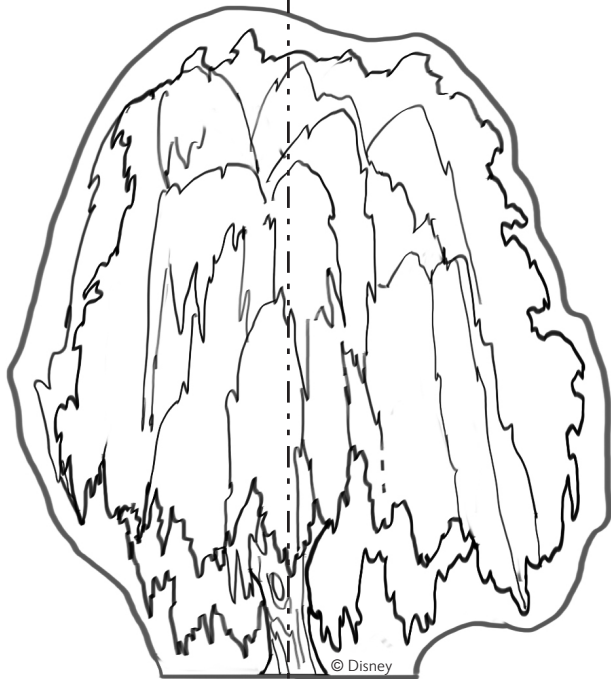
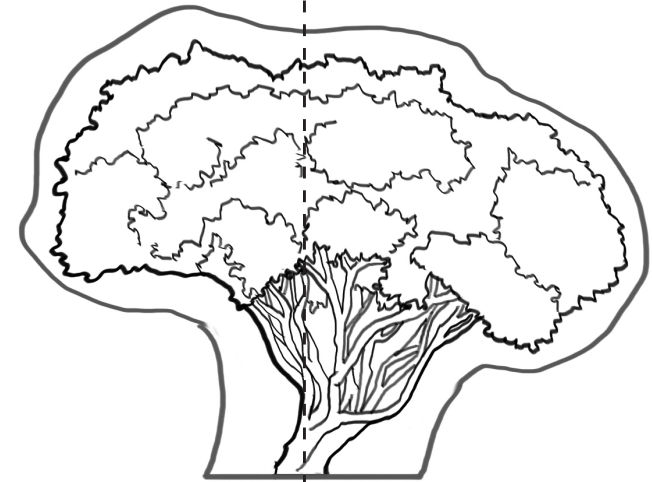
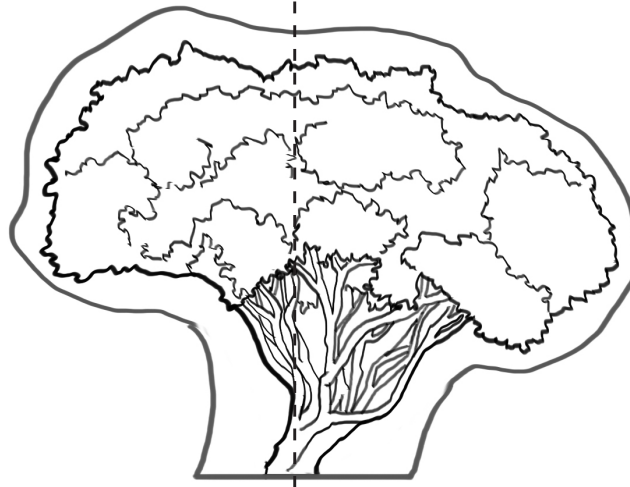
#DisneyMagicMoments | #DisneyPaperParks

FANTASYLAND TREES

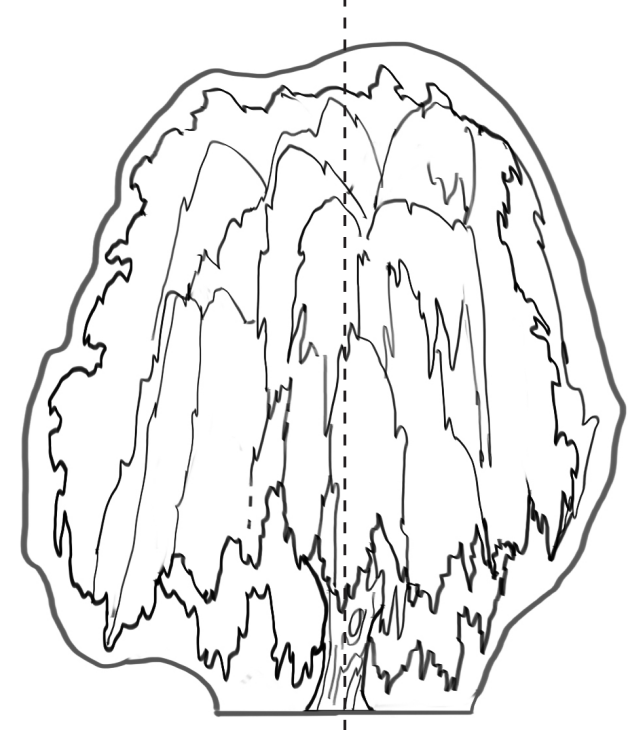
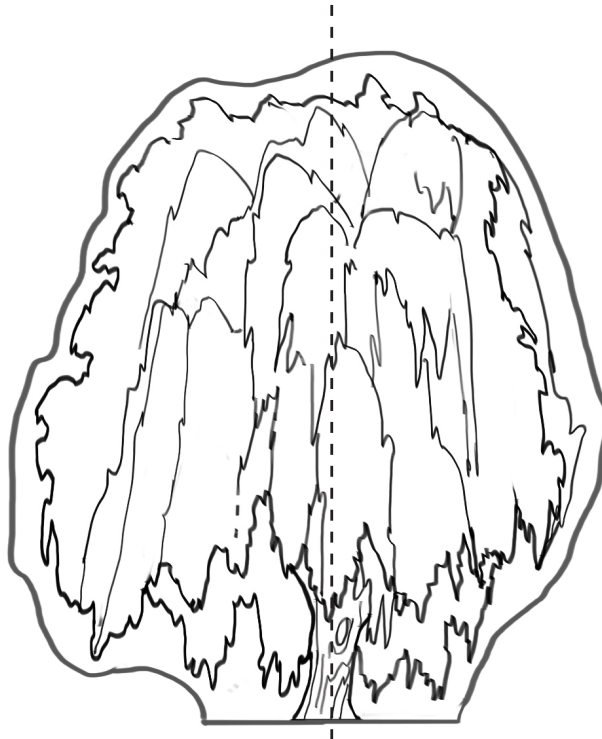
Sheet Number: 5



Strawberry
Arbutus unedo



Weeping Willow
Salix babylonica



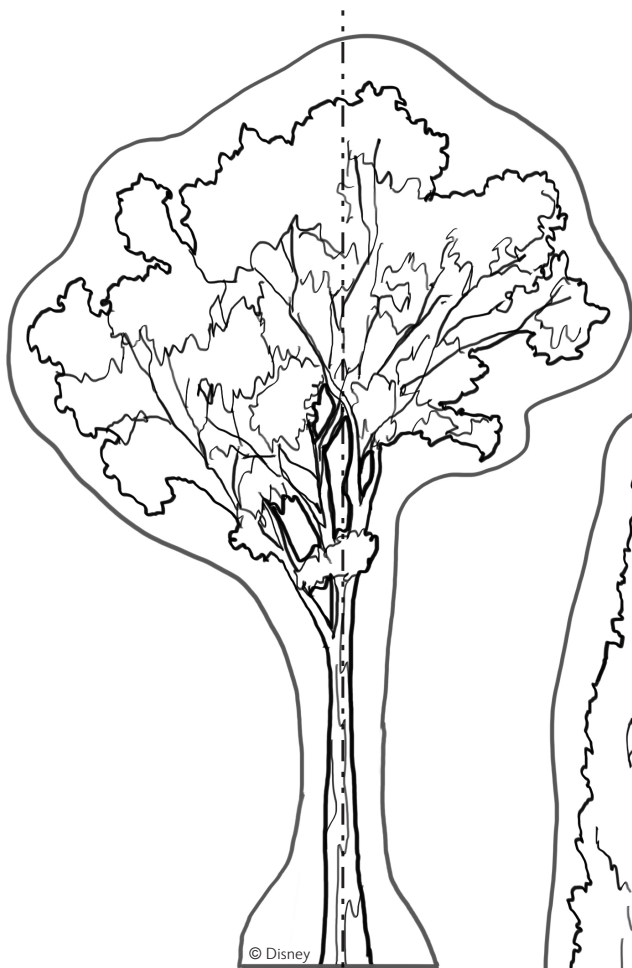


Disney Paper Parks

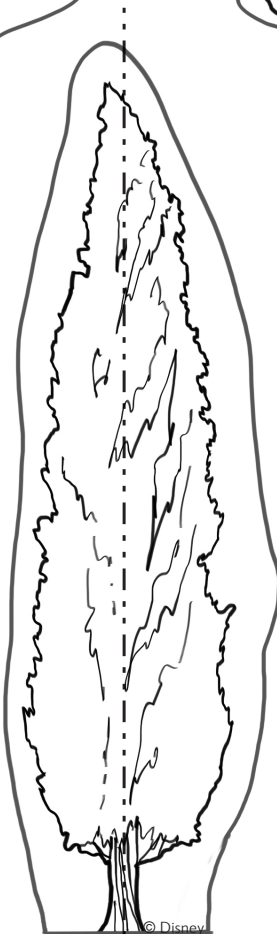
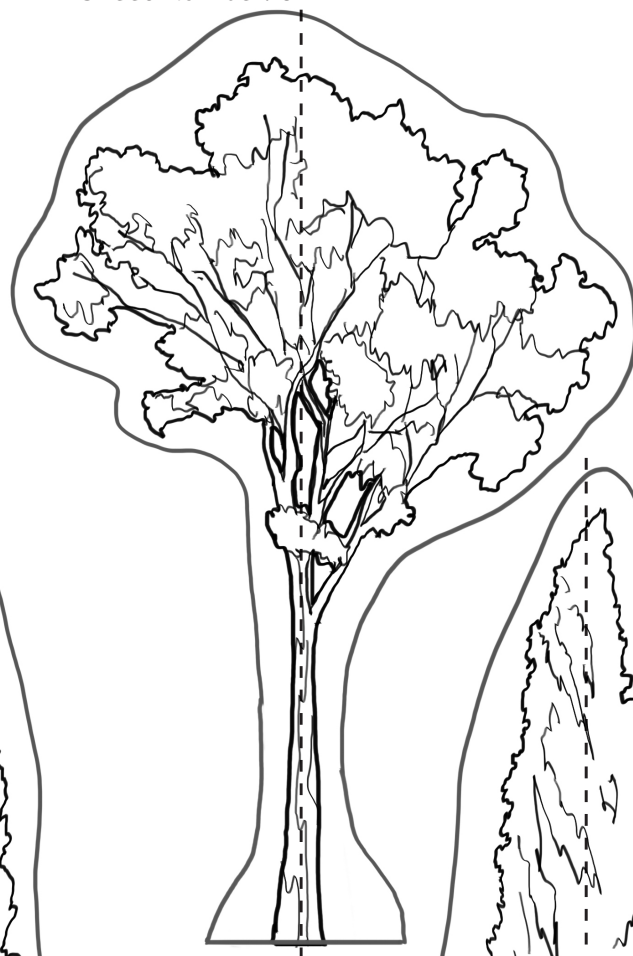
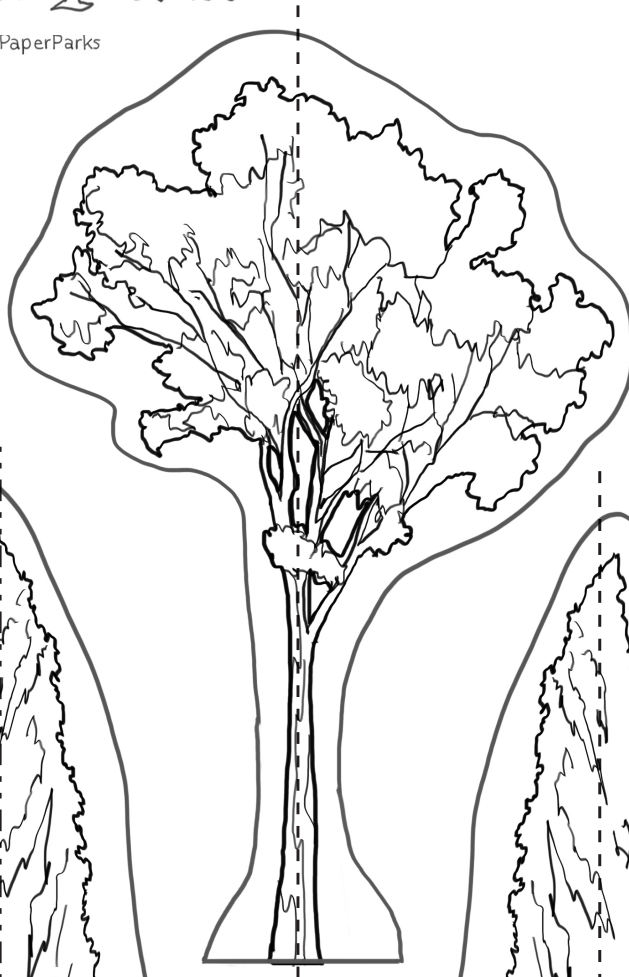
#DisneyMagicMoments | #DisneyPaperParks

FANTASYLAND TREES

Sheet Number: 61



Eucalyptus
Eucalyptus citriodora



Italian Cypress
Cupressus sempervirens

