

Disney Parks Blog

presents

Disney Paper Parks

Main Street, U.S.A. & Magic Happens

Part 1

designed by Stephanie Jazmines & Amy Young of



Walt Disney **IMAGINEERING**

#DisneyMagicMoments | #DisneyPaperParks



Disney Paper Parks

#DisneyMagicMoments | #DisneyPaperParks

MAIN STREET, U.S.A I

Sheet Numbers: 1, 2, 3, 4 + A, B, C

HISTORY

“Main Street, U.S.A. is America at the turn of the century – the crossroads of an era, the gas lamps and the electric lamp – the horse-drawn car and the auto car. Main Street is everyone’s hometown ... the heart line of America.” – Walt Disney

Main Street, U.S.A, is the first themed land guests encounter upon entering Disneyland Park. The look and feel of the place are heavily influenced by Walt Disney’s childhood in Marceline, Missouri. Harkening to a simpler time, the Victorian Era facades of Main Street, U.S.A. lend a charming, nostalgic quality that transport guests into an enchanting, yet familiar world.

MATERIALS



Glue



Scissors



Tape



Paperclips



Crayons



String

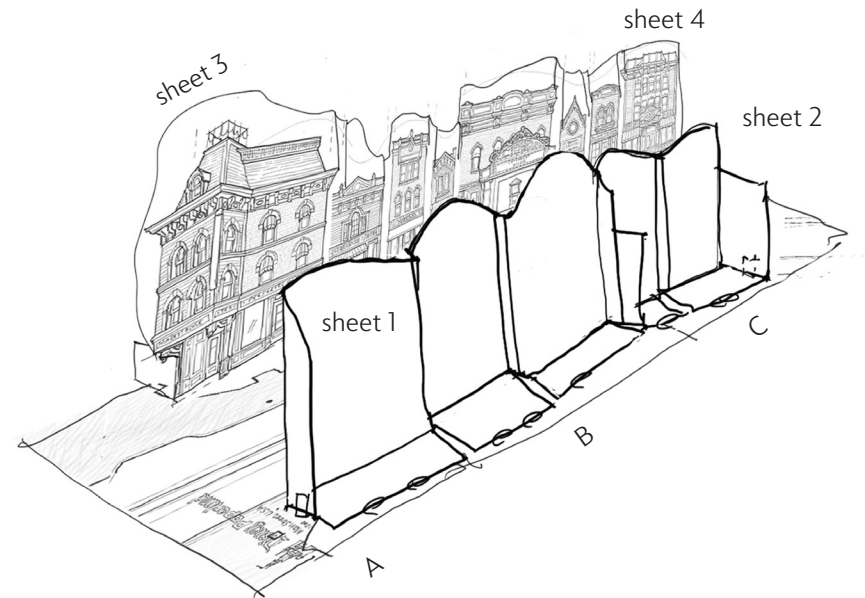
GUIDE

Lines

- Valley fold, fold in front
- Mountain fold, fold behind
- Cut
- X-ray or guide line.

Arrows

- Fold in this direction.
- ↗ Fold behind.
- ↖ Unfold.
- ↔ Fold and unfold.
- ↻ Turn over.



1. Color the pages
2. Cut along solid line where indicated.
3. Lay out the plan sheets (A, B, C)
4. Fold pieces according to Guide.
5. Add weights to the facades so that stay standing. Paperclips work well. Tape the corners for extra stability.
6. Place the elevations on the plan with the corresponding numbers to complete the model!

Please Note: When cutting with scissors and working with any of the materials listed above, adult participation and supervision is recommended.

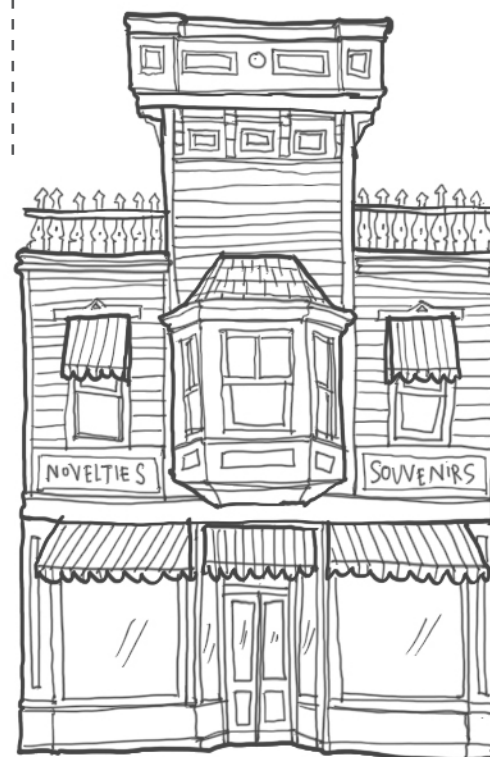


Disney Paper Parks

#DisneyMagicMoments | #DisneyPaperParks

MAIN STREET, U.S.A. I

Sheet Number: 1



© Disney



Disney Paper Parks

#DisneyMagicMoments | #DisneyPaperParks

MAIN STREET, U.S.A. I

Sheet Number: 2



© Disney



Disney Paper Parks

#DisneyMagicMoments | #DisneyPaperParks

MAIN STREET, U.S.A. I

Sheet Number: 3





Disney Paper Parks

#DisneyMagicMoments | #DisneyPaperParks

MAIN STREET, U.S.A. I

Sheet Number: 4



© Disney



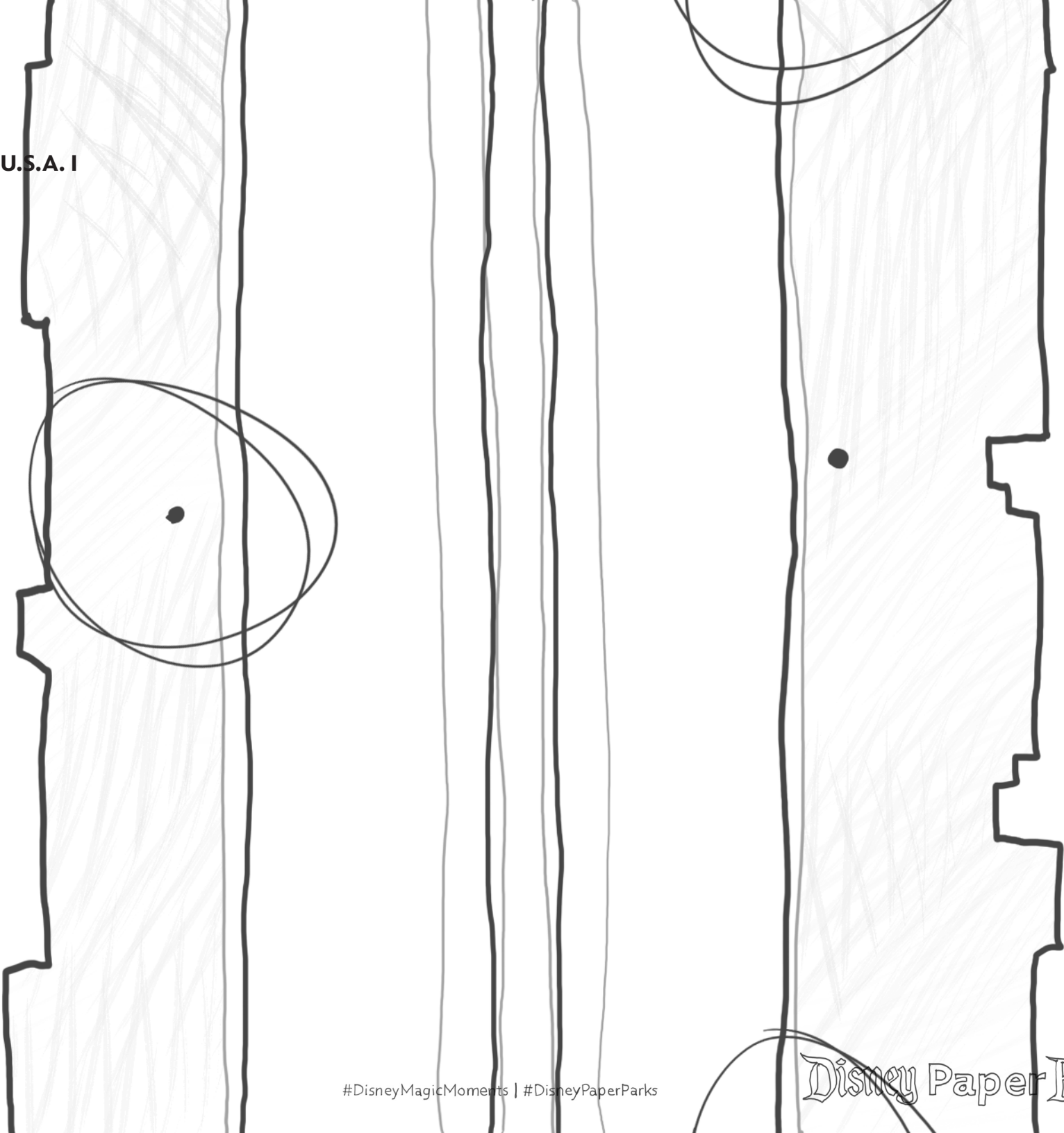
MAIN STREET, U.S.A. I

Sheet Number: A



MAIN STREET, U.S.A. I

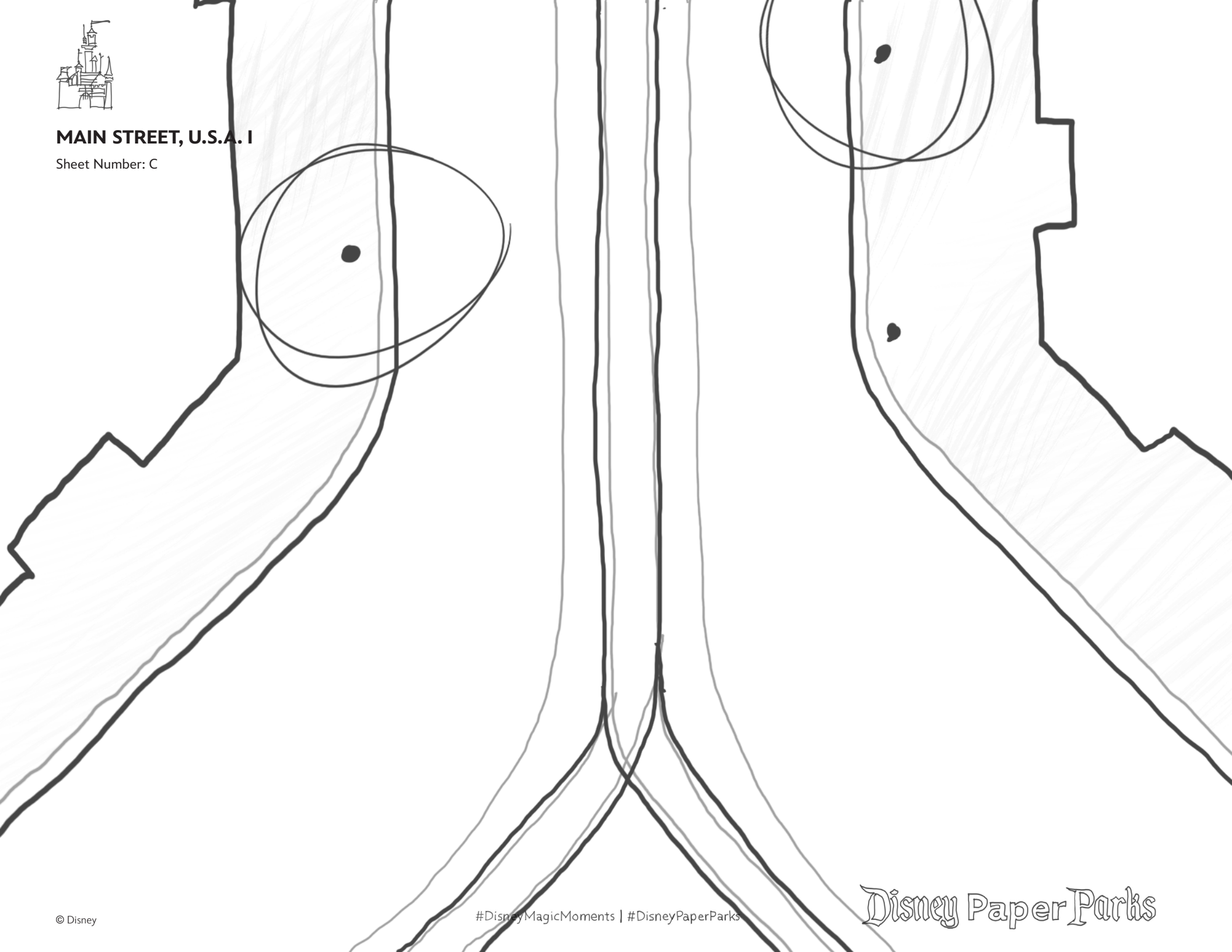
Sheet Number: B





MAIN STREET, U.S.A. I

Sheet Number: C





Disney Paper Parks

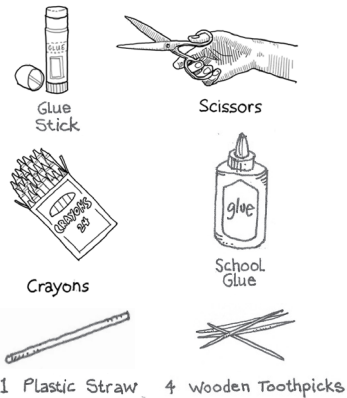
#DisneyMagicMoments | #DisneyPaperParks

HISTORY

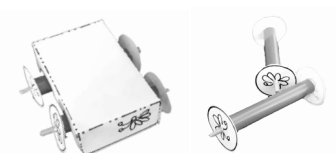
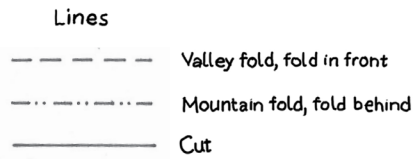
The all-new “Magic Happens” parade debuted on Feb 28, 2020 at Disneyland Park! This incredible daytime spectacular celebrates the awe-inspiring moments of magic that are at the heart of so many Disney stories.

This “Magic Happens” float is leading the way to a magical celebration! Mickey Mouse waves at the crowd of cheerful guests from a huge Sorcerer hat. We hope you have fun assembling and coloring your work of art any way you want!

MATERIALS



GUIDE



trailer box & wheels/axles

Please Note: When cutting with scissors and working with any of the materials listed above, adult participation and supervision is recommended.

MAGIC HAPPENS PARADE

Sorcerer's Apprentice Mickey

INSTRUCTIONS



1. Color the pages.
2. Cut along solid line where indicated.
3. Fold tabs and pieces according to Guide.
4. Assemble piece 1 by gluing (glue stick) the tabs to the inside of the flap to create the trailer box.
5. Assemble wheels and axles by cutting two pieces of straw that are 1 1/2 inches long. Put a wooden toothpick into the straw and pierce one of the paper wheels (piece 2). Apply a small dab of white school glue to keep the paper wheel disc on the toothpick. Pierce the other paper wheel disc on the other side of the toothpick and move it so it is tight against the straw edge. Apply a small dab of white school glue on this side to keep the paper wheel disc on. Trim off the excess toothpick with scissors. Complete step 5 again so you have two wheel axle assemblies total.
6. Assemble piece 4 to make an open-end cylinder.
7. Assemble piece 5 to make the hat. Wrap the two magical swoops around the hat any way you like. Fasten with a dab of glue (glue stick) at the tips of the swoops.
8. Assemble the parts as shown in the image.
9. Piece 3: Bend waves up and down as shown in the image.



Disney Paper Parks

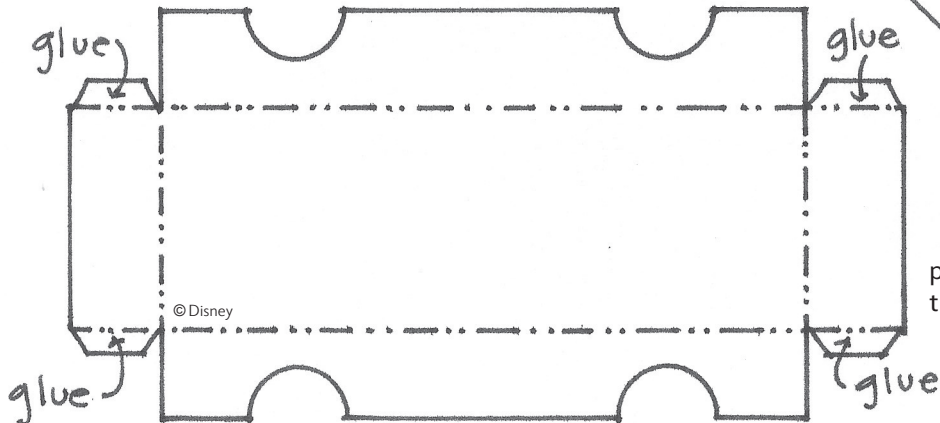
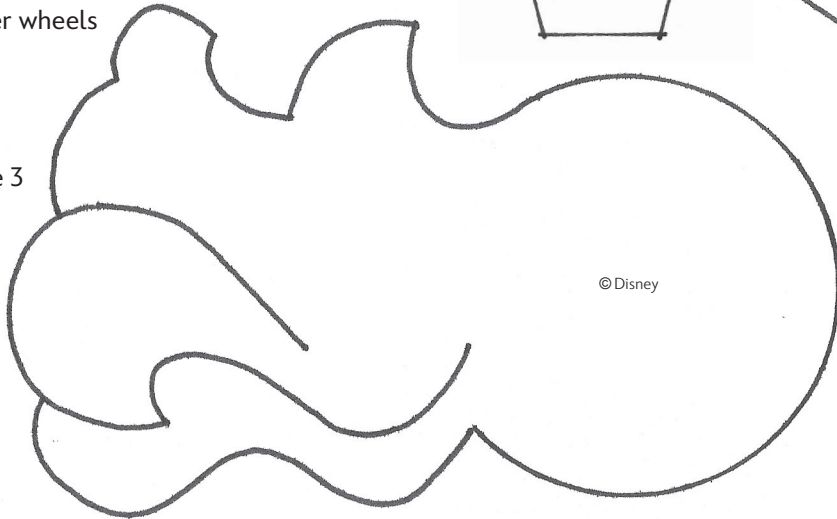
#DisneyMagicMoments | #DisneyPaperParks

MAGIC HAPPENS PARADE Sorcerer's Apprentice Mickey

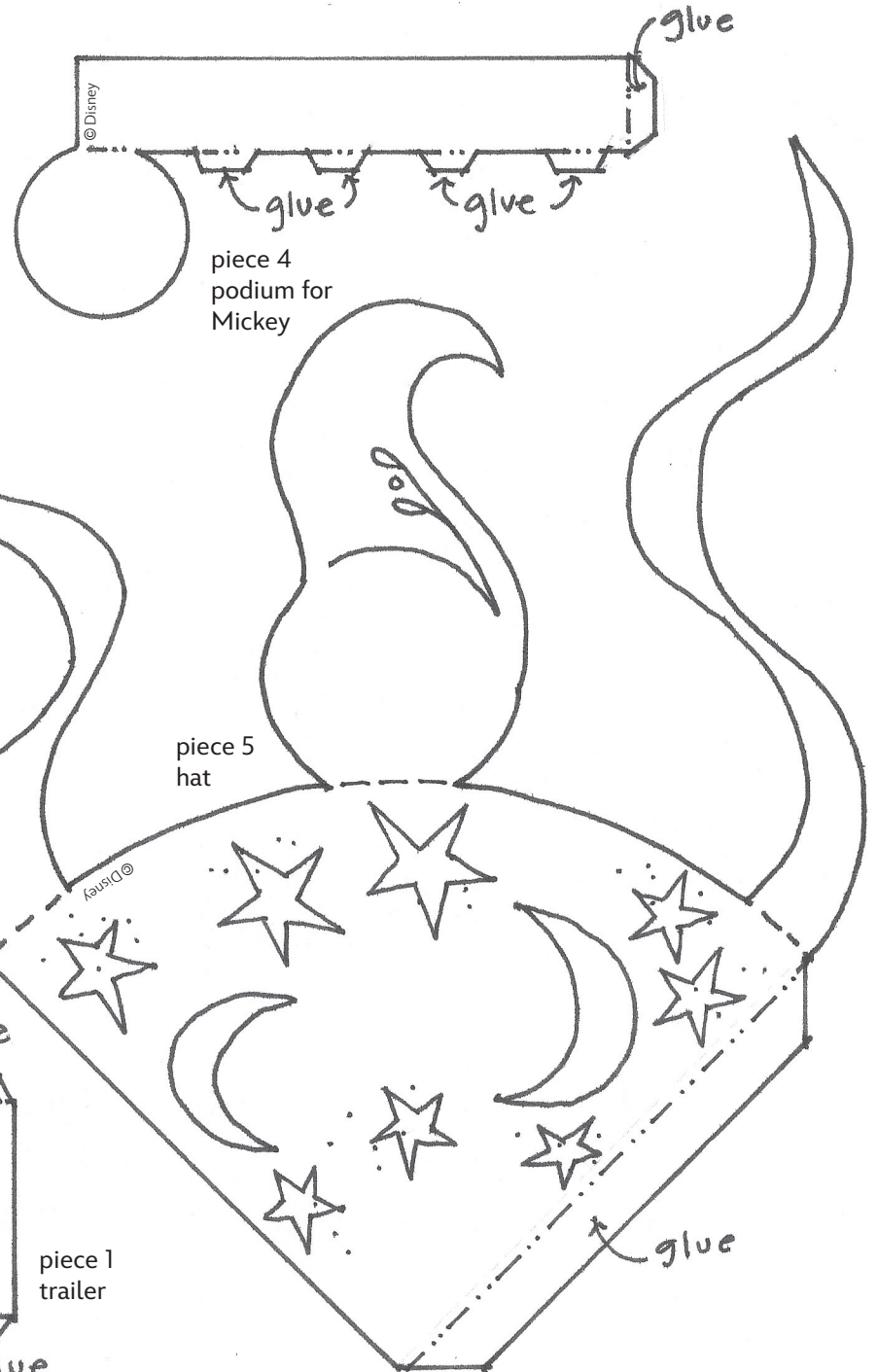


piece 2
trailer wheels

piece 3
base



piece 1
trailer



piece 4
podium for
Mickey

piece 5
hat



Disney Paper Parks

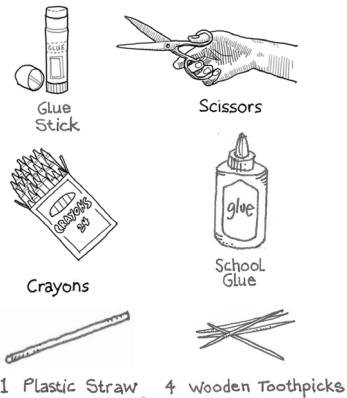
#DisneyMagicMoments | #DisneyPaperParks

HISTORY

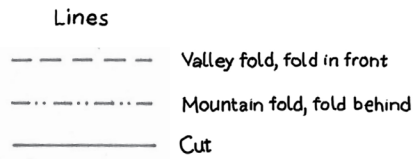
The all-new “Magic Happens” parade debuted on Feb 28, 2020 at Disneyland Park! This incredible daytime spectacular celebrates the awe-inspiring moments of magic that are at the heart of so many Disney stories.

This “Magic Happens” float is alive with adventure! With Hei Hei trailing behind, Moana is aboard her beautiful voyager canoe and ready to set sail. We hope you have fun assembling and coloring your work of art any way you want!

MATERIALS



GUIDE



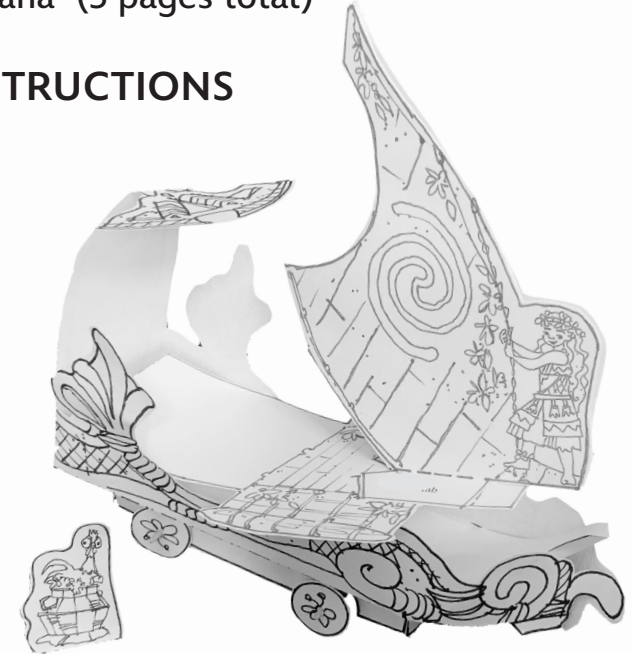
trailer box & wheels/axles

Please Note: When cutting with scissors and working with any of the materials listed above, adult participation and supervision is recommended.

MAGIC HAPPENS PARADE

Moana (3 pages total)

INSTRUCTIONS



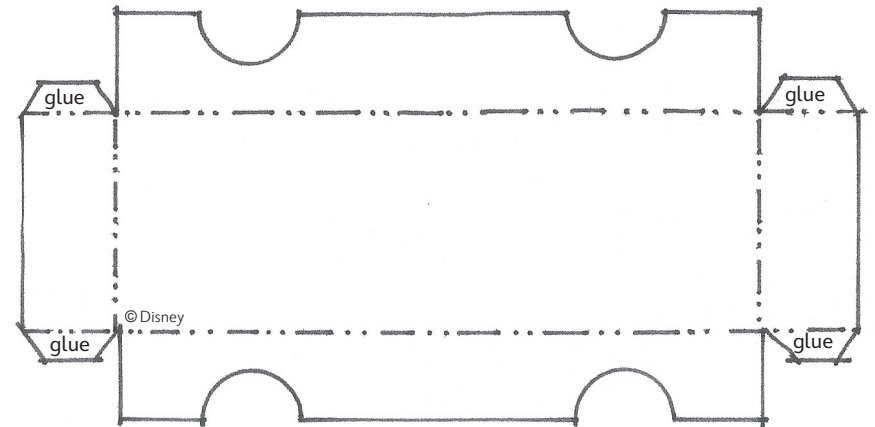
1. Color the pages.
2. Cut along solid line where indicated.
3. Fold tabs and pieces according to Guide.
4. Assemble piece 1 by gluing (glue stick) the tabs to the inside of the flaps to create the trailer box.
5. Assemble wheels and axles by cutting two pieces of straw that are 1 1/2 inches long. Put a wooden toothpick into the straw and pierce one of the paper wheels (piece 2). Apply a small dab of white school glue to keep the paper wheel disc on the toothpick. Pierce the other paper wheel disc on the other side of the toothpick and move it so it is tight against the straw edge. Apply a small dab of white school glue on this side to keep the paper wheel disc on. Trim off the excess toothpick with scissors. Complete step five again so you have two wheel axle assemblies total.
6. Assemble piece 3 to make the base. Use the glue stick to glue the flaps to the back panel on both sides. And glue tab 1 to tab 2.
7. Piece 5: Use the glue stick to glue the two sides together. Glue boat tabs to piece 4.
8. Assemble as shown.



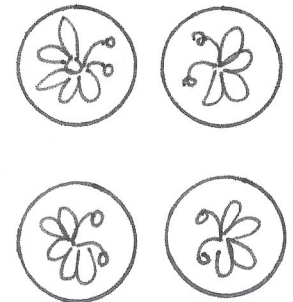
Disney Paper Parks

#DisneyMagicMoments | #DisneyPaperParks

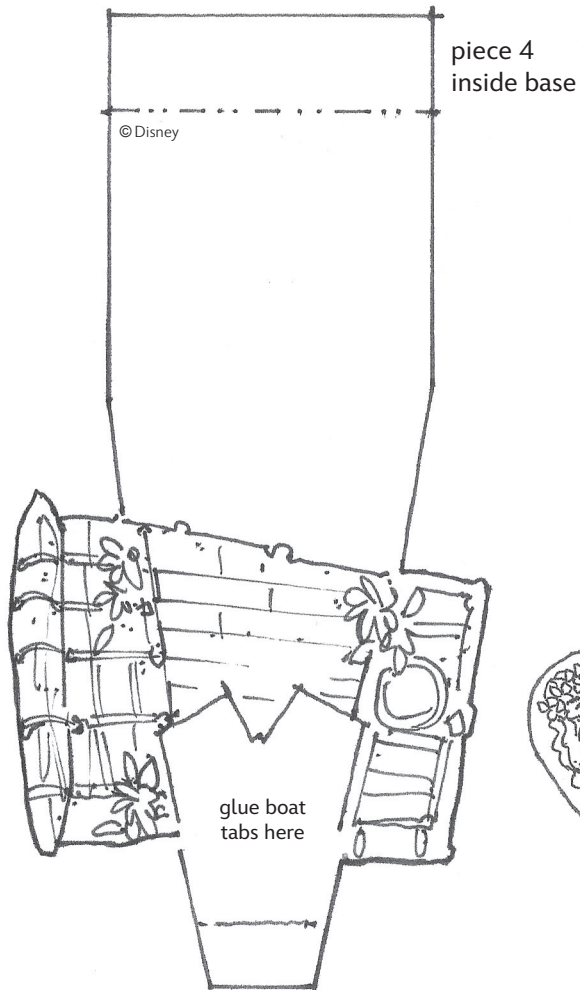
MAGIC HAPPENS PARADE Moana, page 1



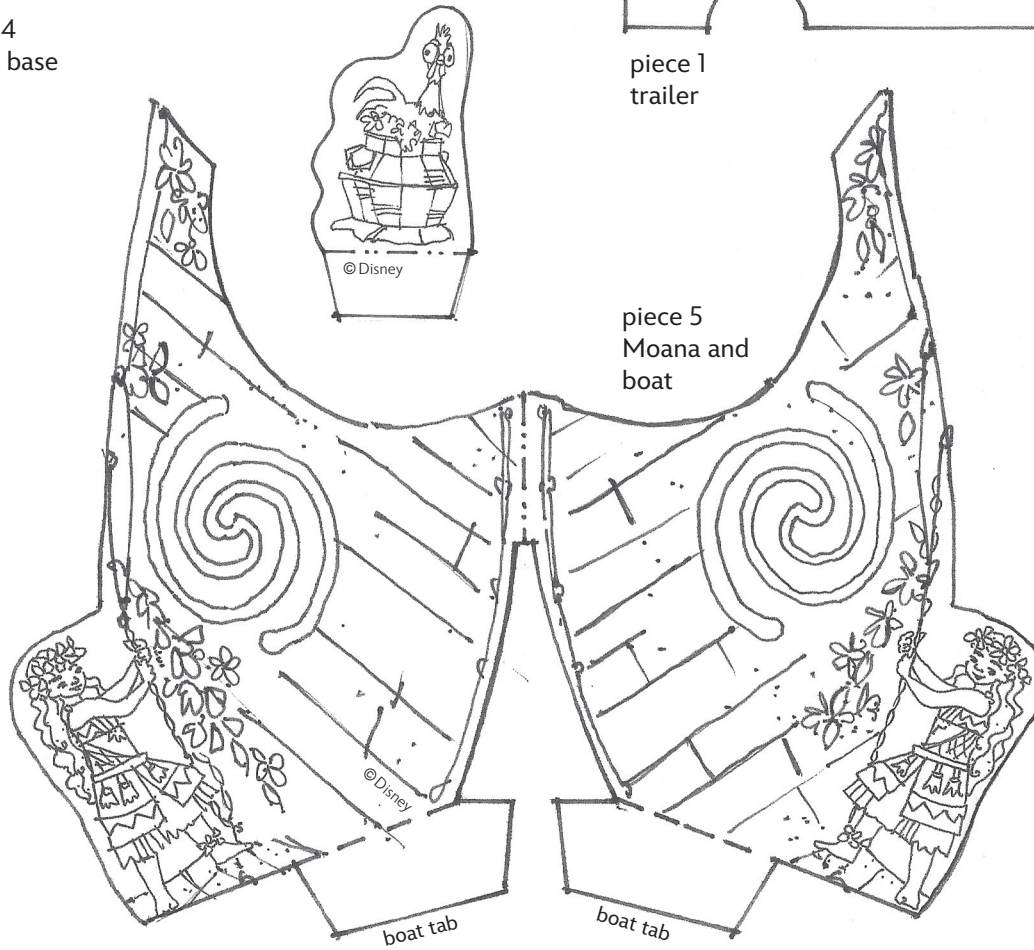
piece 1
trailer



piece 2
trailer wheels



piece 4
inside base



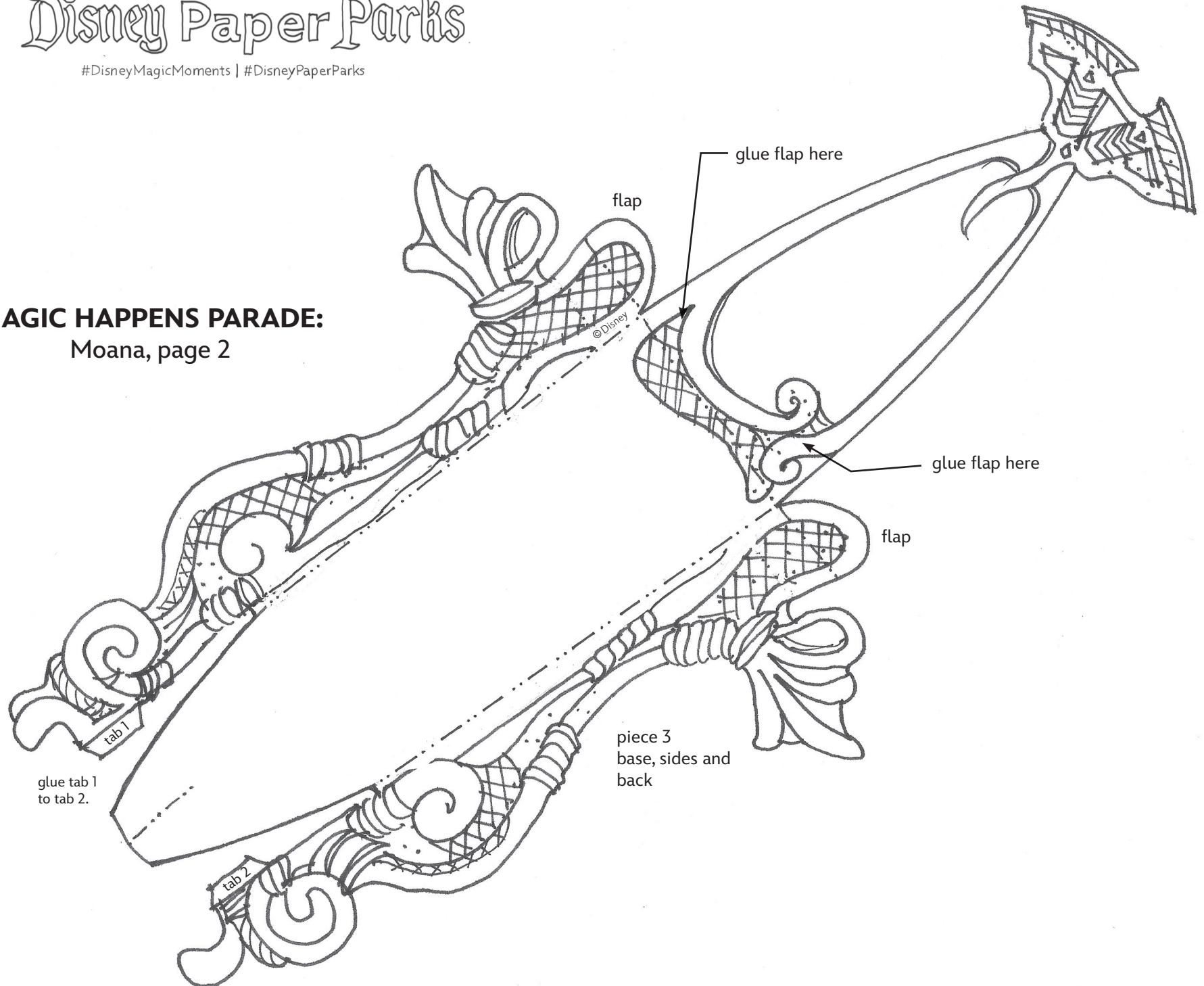
piece 5
Moana and
boat



Disney Paper Parks

#DisneyMagicMoments | #DisneyPaperParks

MAGIC HAPPENS PARADE: Moana, page 2





Disney Paper Parks

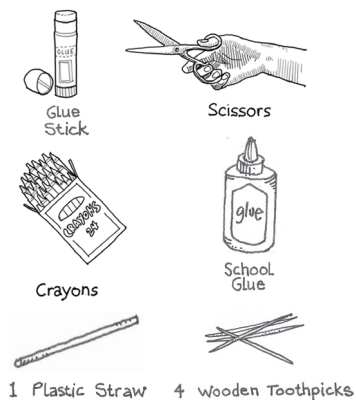
#DisneyMagicMoments | #DisneyPaperParks

HISTORY

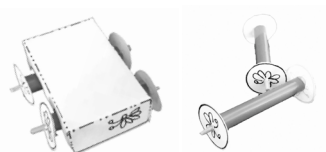
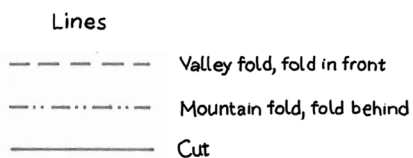
The all-new “Magic Happens” parade debuted on Feb 28, 2020 at Disneyland Park! This incredible daytime spectacular celebrates the awe-inspiring moments of magic that are at the heart of so many Disney stories.

This “Magic Happens” float features Maui and Pua, hanging out on an island paradise. We hope you have fun assembling and coloring your work of art any way you want!

MATERIALS



GUIDE



trailer box & wheels/axles

Please Note: When cutting with scissors and working with any of the materials listed above, adult participation and supervision is recommended.

MAGIC HAPPENS PARADE

Maui & Pua

INSTRUCTIONS



1. Color the pages.
2. Cut along solid line where indicated.
3. Fold tabs and pieces according to Guide.
4. Assemble piece 1 by gluing (glue stick) the tabs to the inside of the flaps to create the trailer box.
5. Assemble wheels and axles by cutting two pieces of straw that are 1 1/2 inches long. Put a wooden toothpick into the straw and pierce one of the paper wheels (piece 2). Apply a small dab of white school glue to keep the paper wheel disc on the toothpick. Pierce the other paper wheel disk on the other side of the toothpick and move it so it is tight against the straw edge. Apply a small dab of white school glue on this side to keep the paper wheel disk on. Trim off the excess toothpick with a scissors. Complete step five again so you have two wheel axle assemblies total.
6. Assemble piece 3 to make the cylinder base. Use the glue stick to glue the tabs to the inside of the top.
7. Piece 4: Use the glue stick to glue the two sides together. Glue tree part to the back of the cylinder base (piece 3).
8. Piece 5: Use the glue (glue stick) to attach the plants (piece 5) around the outside of the cylinder (piece 3).
9. Assemble as shown.

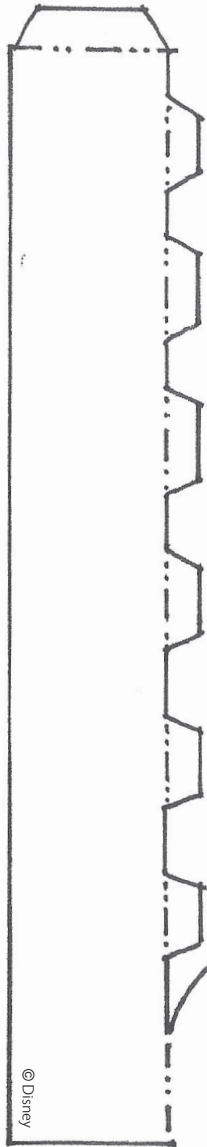


Disney Paper Parks

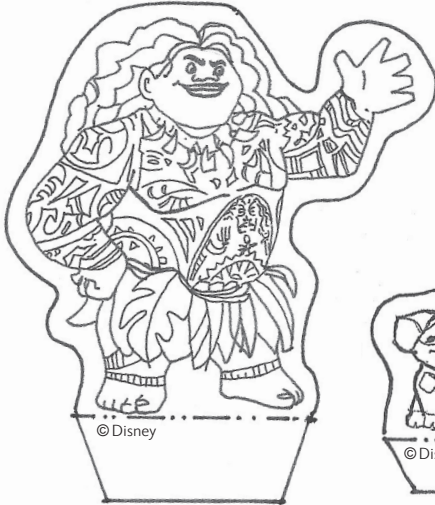
#DisneyMagicMoments | #DisneyPaperParks

MAGIC HAPPENS PARADE

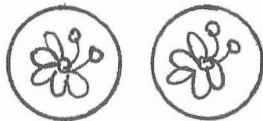
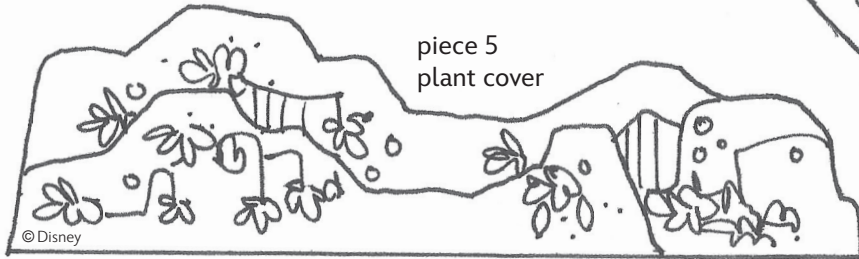
Maui & Pua



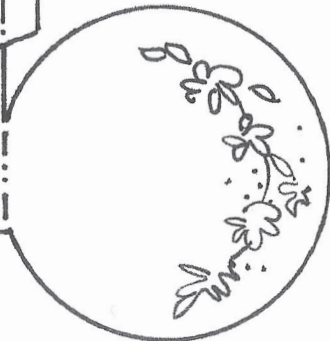
piece 3
base



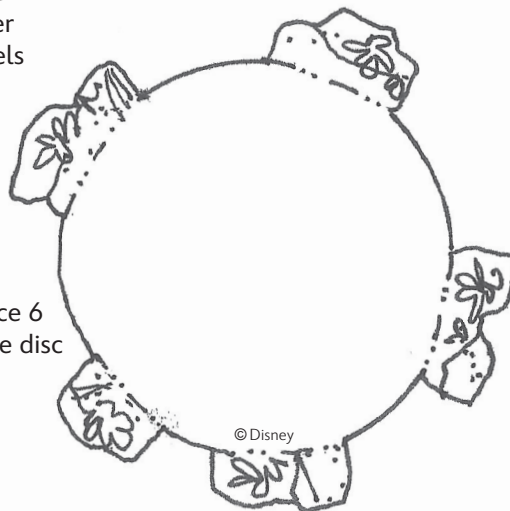
piece 5
plant cover



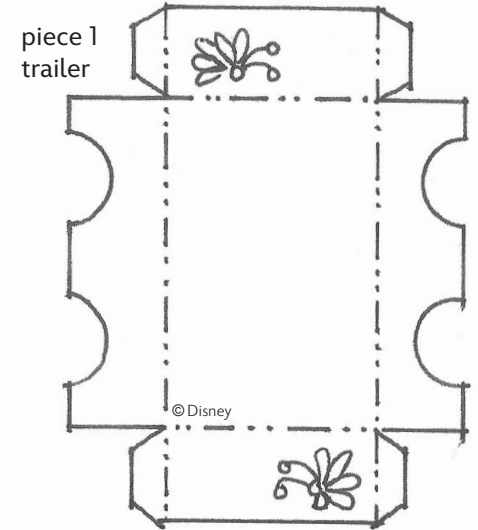
piece 2
trailer
wheels



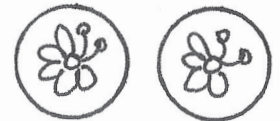
piece 6
base disc



piece 4
trees



piece 1
trailer



piece 2
trailer
wheels



Disney Paper Parks

#DisneyMagicMoments | #DisneyPaperParks

HISTORY

The all-new “Magic Happens” parade debuted on Feb 28, 2020 at Disneyland Park! This incredible daytime spectacular celebrates the awe-inspiring moments of magic that are at the heart of so many Disney stories.

This “Magic Happens” float is artistically portraying the Disney and Pixar film, “Coco.” Miguel is playing a lively tune while Imelda and Hector sing along. Watch Dante as he leaps along the marigold bridge, changing into a colorful Alebrije! We hope you have fun assembling and coloring your work of art any way you want!

MATERIALS



Glue Stick

Scissors



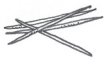
Crayons



School Glue



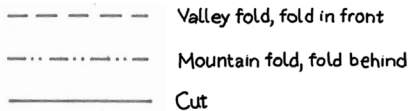
1 Plastic Straw



4 Wooden Toothpicks

GUIDE

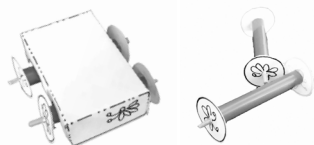
Lines



Valley fold, fold in front

Mountain fold, fold behind

Cut



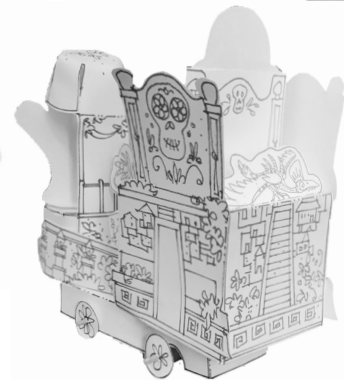
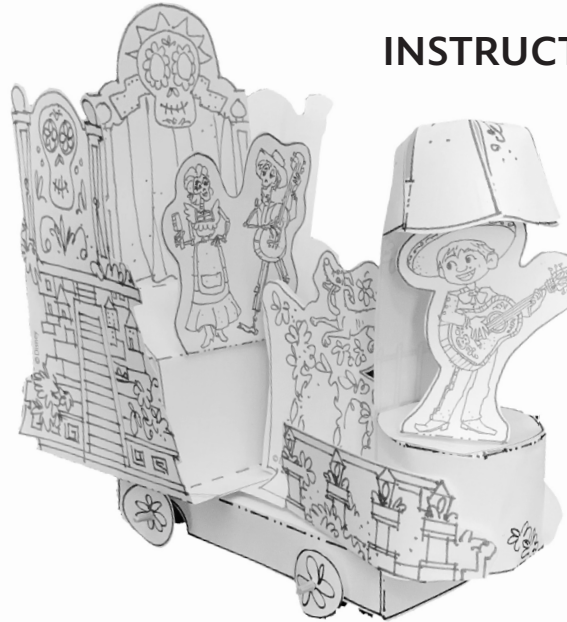
trailer box & wheels/axles

Please Note: When cutting with scissors and working with any of the materials listed above, adult participation and supervision is recommended.

MAGIC HAPPENS PARADE

Coco (3 pages total)

INSTRUCTIONS



1. Color the pages.
2. Cut along solid line where indicated.
3. Fold tabs and pieces according to Guide.
4. Assemble piece 1 by gluing (glue stick) the tabs to the inside of the flaps to create the trailer box.
5. Assemble wheels and axles by cutting two pieces of straw that are 1 1/2 inches long. Put a wooden toothpick into the straw and pierce one of the paper wheels (piece 2). Apply a small dab of white school glue to keep the paper wheel disc on the toothpick. Pierce the other paper wheel disk on the other side of the toothpick and move it so it is tight against the straw edge. Apply a small dab of white school glue on this side to keep the paper wheel disk on. Trim off the excess toothpick with scissors. Complete step five again so you have two wheel axle assemblies total.
6. Assemble piece 3 to make the base. Use the glue stick to glue the tabs to the inside of the side flaps.
7. Piece 4: Use the glue stick to glue the 2 parts of the backdrop backs together. Glue bottom tab to the base of the float as shown. Glue Hector and Imelda to this piece as shown.
8. Piece 5: Use the glue stick to glue the pieces together. Glue the base of the center as shown.
9. Assemble piece 6 to make the cylinder base. Use the glue stick to glue the tabs to the inside of the top.
10. Piece 7: Use the glue stick to glue the tabs to the underside of each closest fan shape. Create a canopy for Miguel.
11. Glue piece 7 to the back of piece 6 and assemble as shown. Secure piece 6 by gluing tab to underside of base.

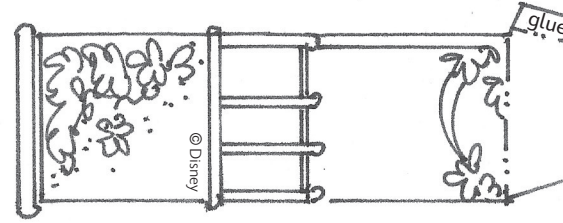
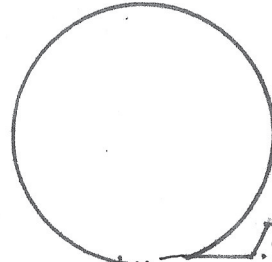


Disney Paper Parks

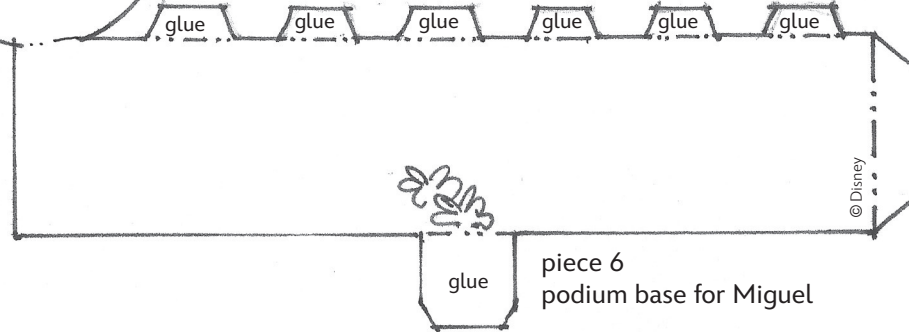
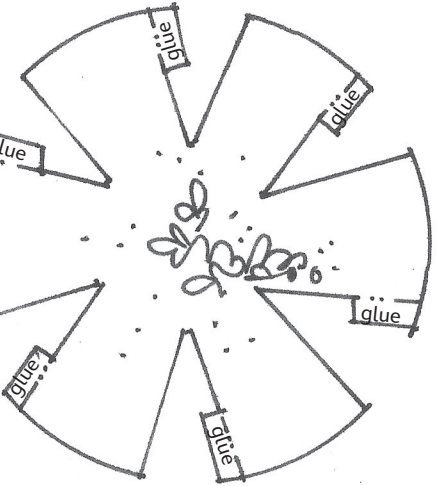
#DisneyMagicMoments | #DisneyPaperParks

MAGIC HAPPENS PARADE

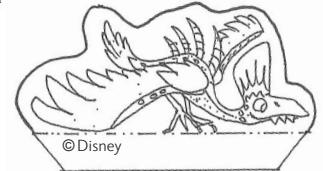
Coco, page 1



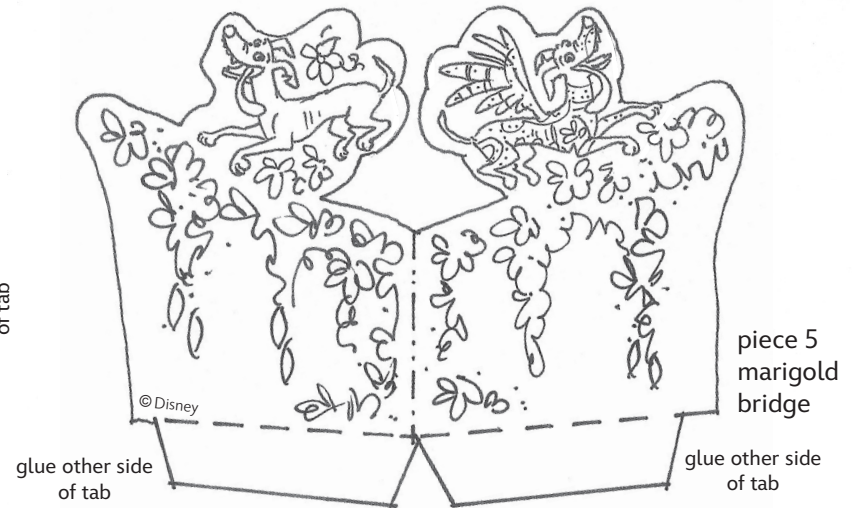
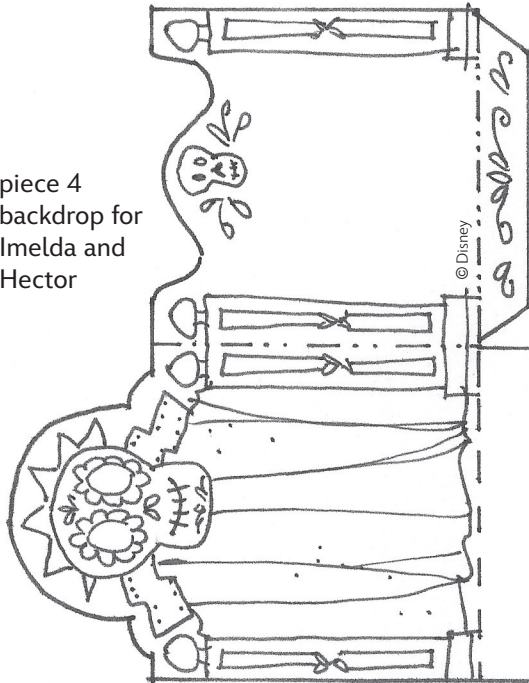
piece 7
canopy for piece 6



piece 6
podium base for Miguel



piece 4
backdrop for
Imelda and
Hector



piece 5
marigold
bridge

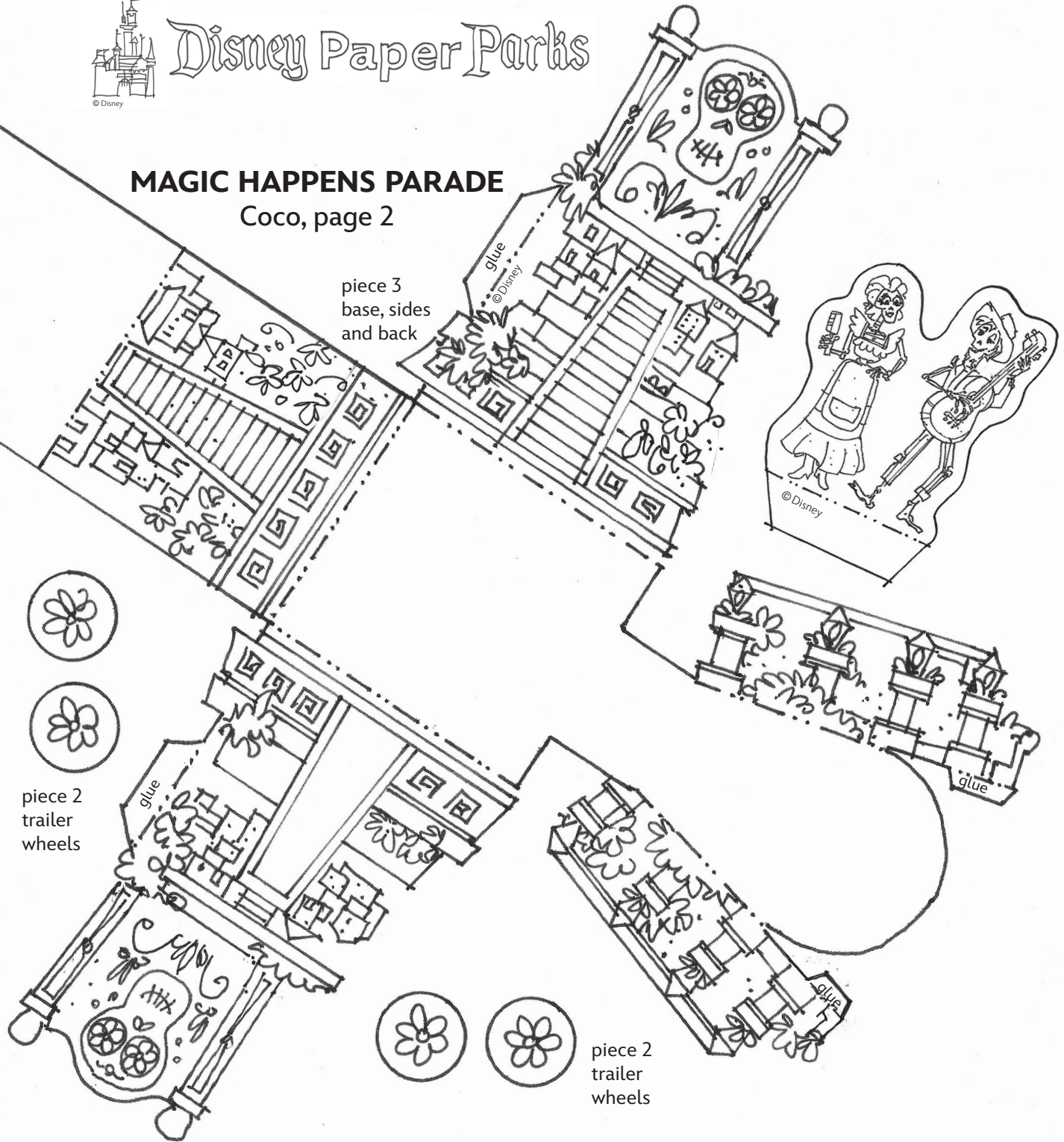
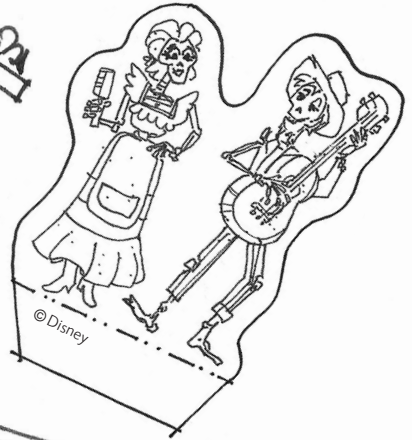


Disney Paper Parks

MAGIC HAPPENS PARADE

Coco, page 2

piece 3
base, sides
and back



#DisneyMagicMoments | #DisneyPaperParks

piece 1
trailer