

Disney Parks Blog

presents

Disney Paper Parks

Main Street, U.S.A. & Magic Happens

Part 2

designed by Stephanie Jazmines & Amy Young of



Walt Disney IMAGINEERING

#DisneyMagicMoments | #DisneyPaperParks



Disney Paper Parks

#DisneyMagicMoments | #DisneyPaperParks

MAIN STREET, U.S.A II

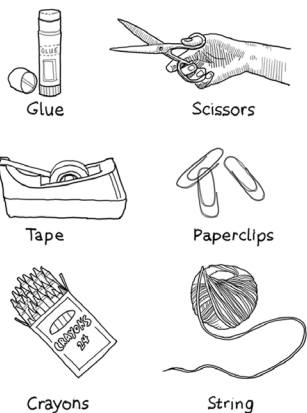
Sheet Numbers: 5, 6, 7, 8, 9, 10 + D, E, F

HISTORY

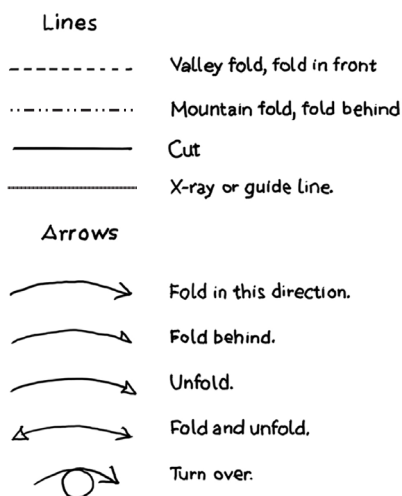
“Main Street, U.S.A. is America at the turn of the century – the crossroads of an era, the gas lamps and the electric lamp – the horse-drawn car and the auto car. Main Street is everyone’s hometown ... the heart line of America.” – Walt Disney

Main Street, U.S.A, is the first themed land guests encounter upon entering Disneyland Park. The look and feel of the place are heavily influenced by Walt Disney’s childhood in Marceline, Missouri. Harkening to a simpler time, the Victorian Era facades of Main Street, U.S.A. lend a charming, nostalgic quality that transport guests into an enchanting, yet familiar world.

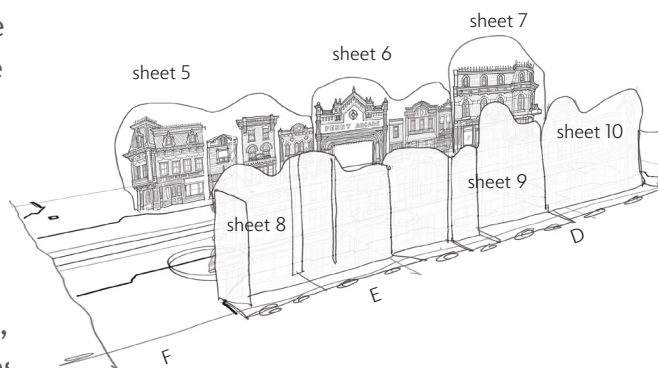
MATERIALS



GUIDE



INSTRUCTIONS



FACADES

1. Color the pages
2. Cut along solid line where indicated.
3. Lay out the plan sheets (D, E, F)
4. Fold pieces according to Guide.
5. Add weights to the facades so that stay standing. Paperclips work well. Tape the corners for extra stability.
6. Place the elevations on the plan with the corresponding numbers to complete the model!

TREES



1. Color the pages
2. Cut along solid line where indicated. Note: Each tree is composed of three identical pieces.
3. Fold pieces according to Guide.
4. Glue one tree to the left half of another.
5. Glue the third tree to the right half. Make sure to keep the bottoms even!
6. Stand up the trees by fanning out the parts. Place in the model where the trees have been shown in the plan. Make as many as you’d like to use throughout the park.

Please Note: When cutting with scissors and working with any of the materials listed above, adult participation and supervision is recommended.

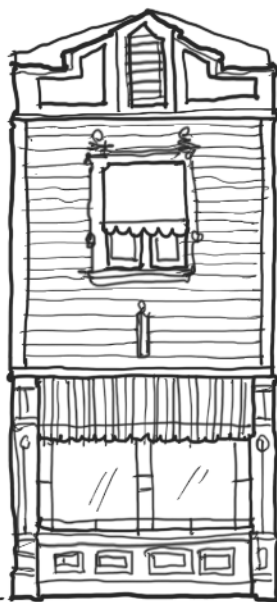


Disney Paper Parks

#DisneyMagicMoments | #DisneyPaperParks

MAIN STREET, U.S.A. II

Sheet Number: 5



© Disney

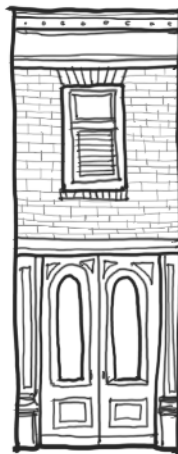
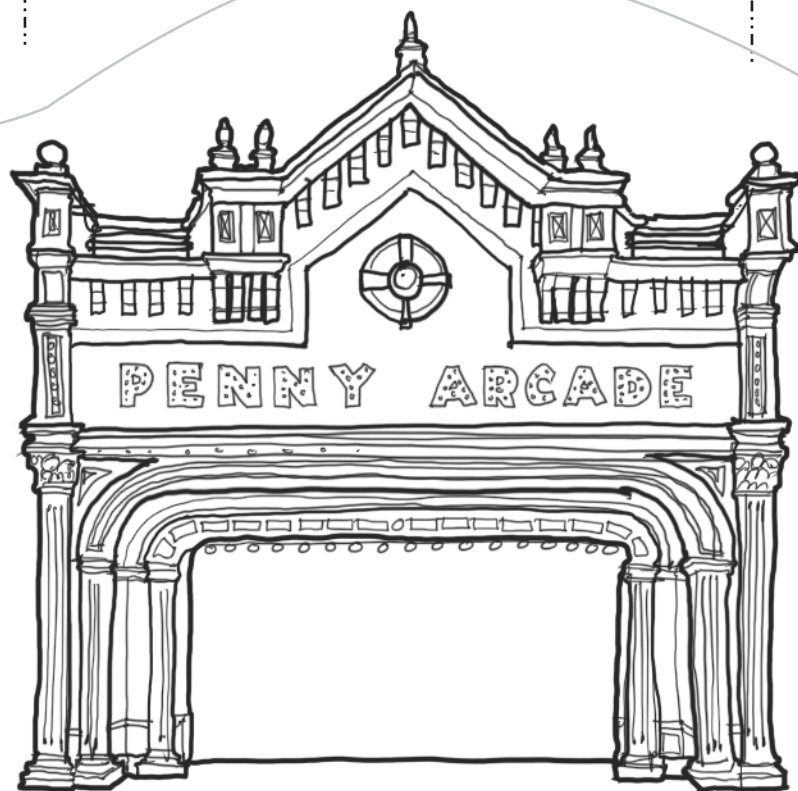


Disney Paper Parks

#DisneyMagicMoments | #DisneyPaperParks

MAIN STREET, U.S.A. II

Sheet Number: 6



© Disney



Disney Paper Parks

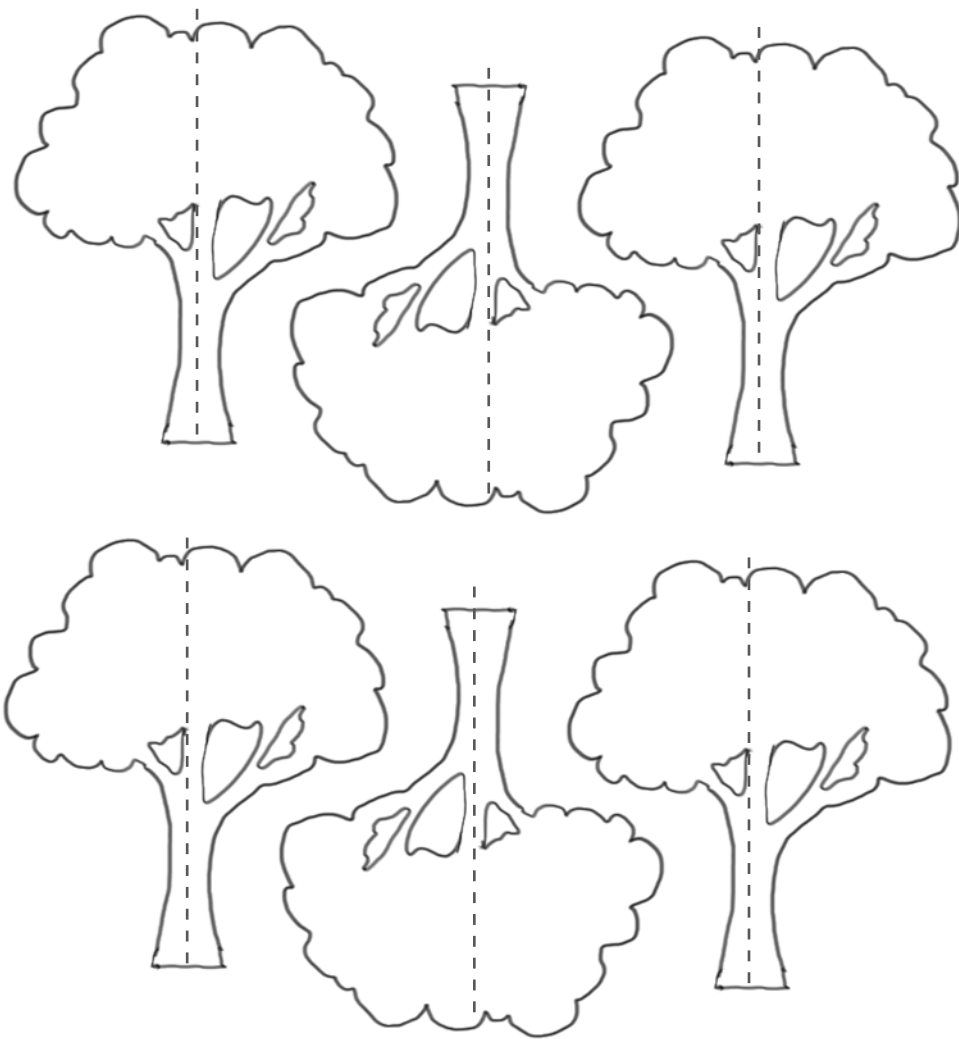
#DisneyMagicMoments | #DisneyPaperParks

MAIN STREET, U.S.A. II

Sheet Number: 7



© Disney



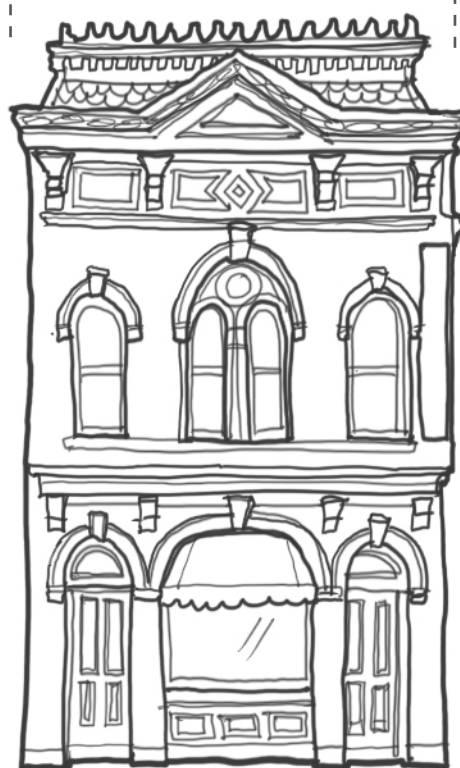


Disney Paper Parks

#DisneyMagicMoments | #DisneyPaperParks

MAIN STREET, U.S.A. II

Sheet Number: 8



© Disney

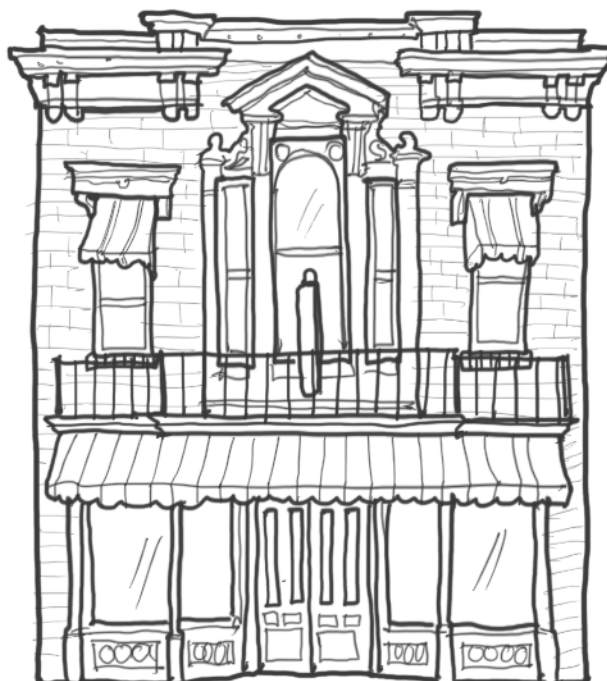
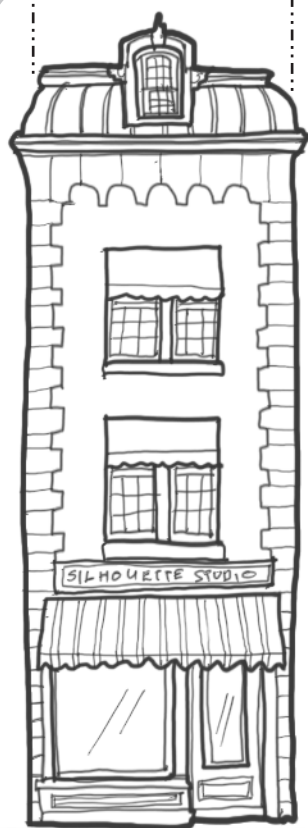


Disney Paper Parks

#DisneyMagicMoments | #DisneyPaperParks

MAIN STREET, U.S.A. II

Sheet Number: 9



© Disney

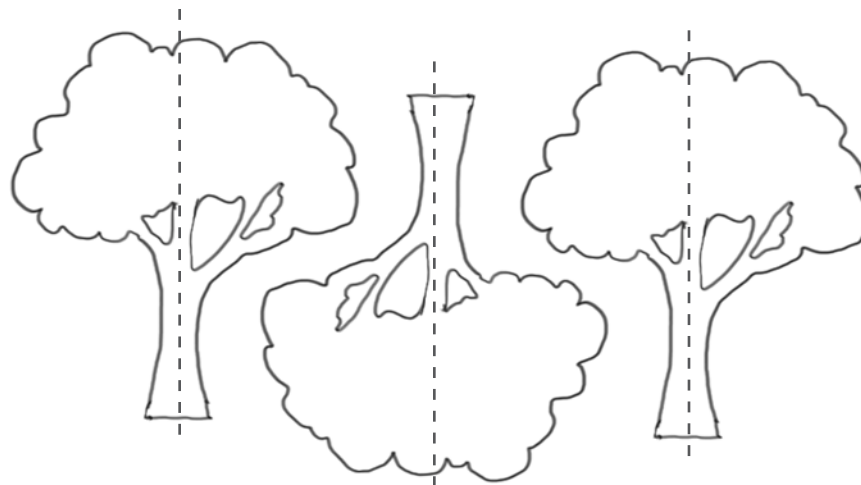
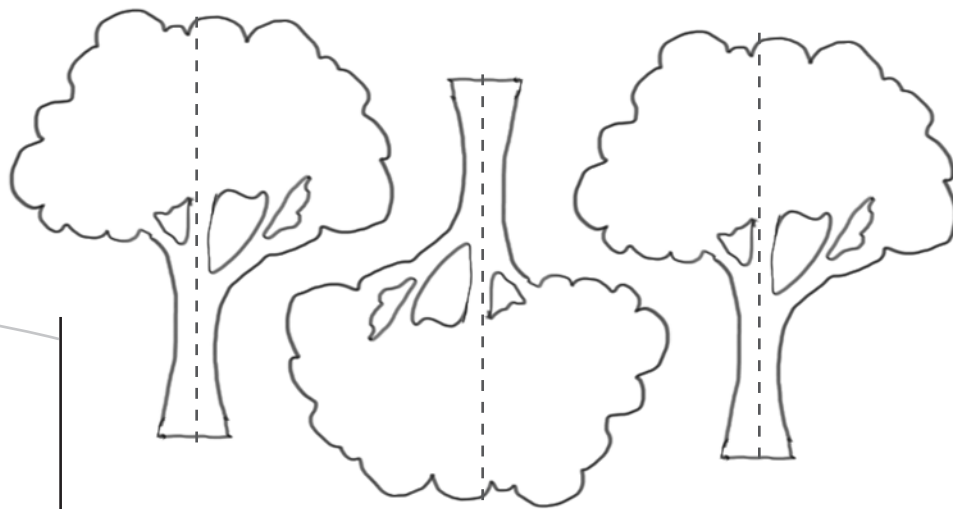
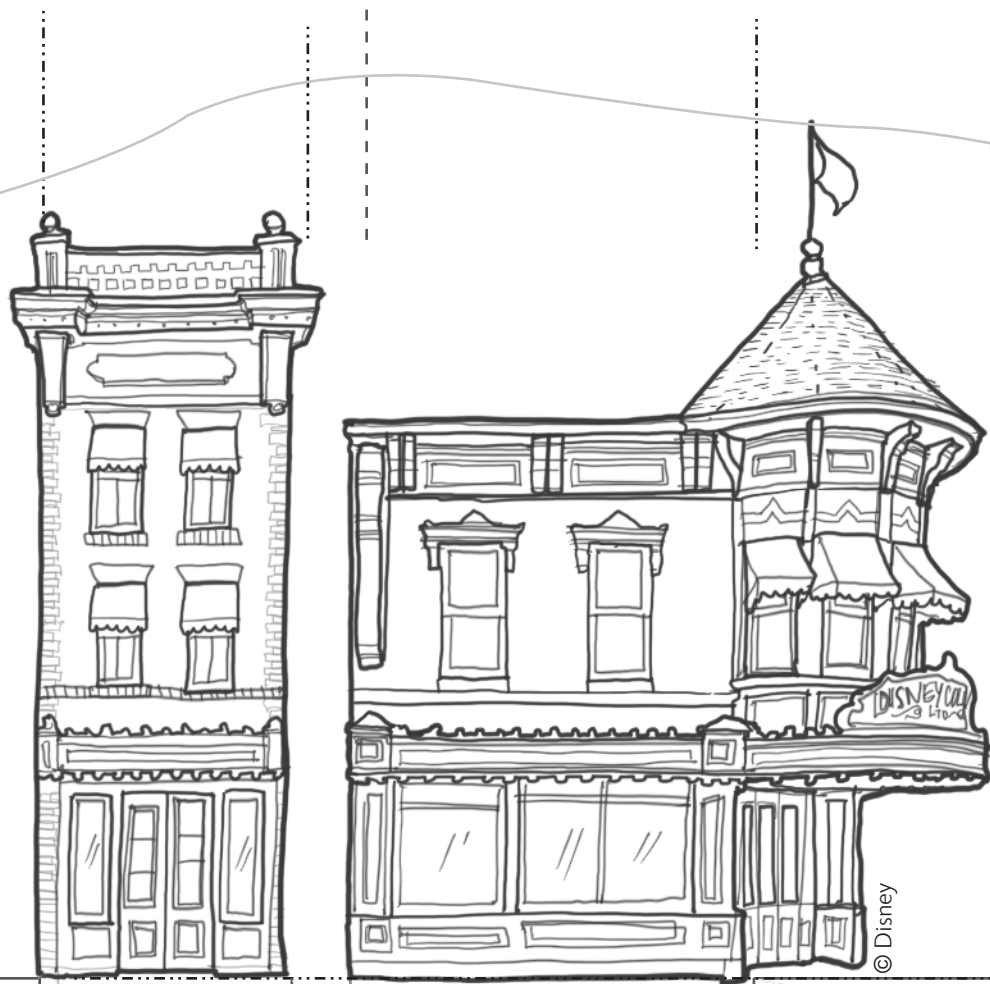


Disney Paper Parks

#DisneyMagicMoments | #DisneyPaperParks

MAIN STREET, U.S.A. II

Sheet Number: 10

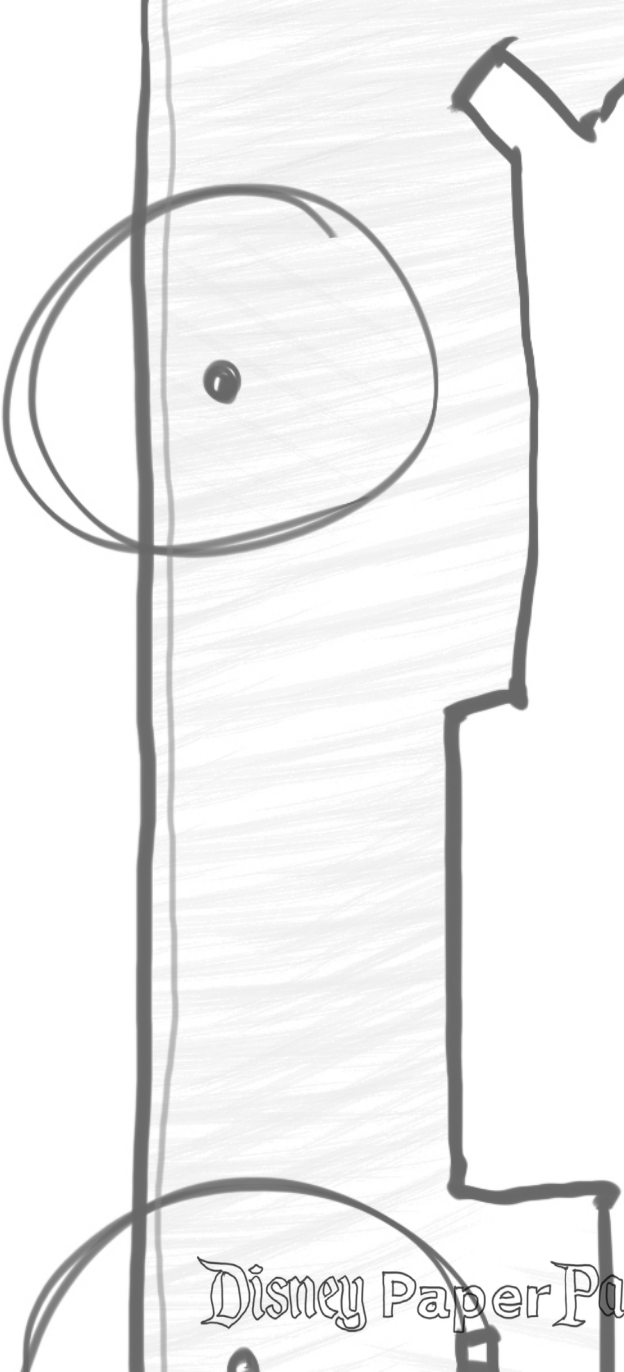
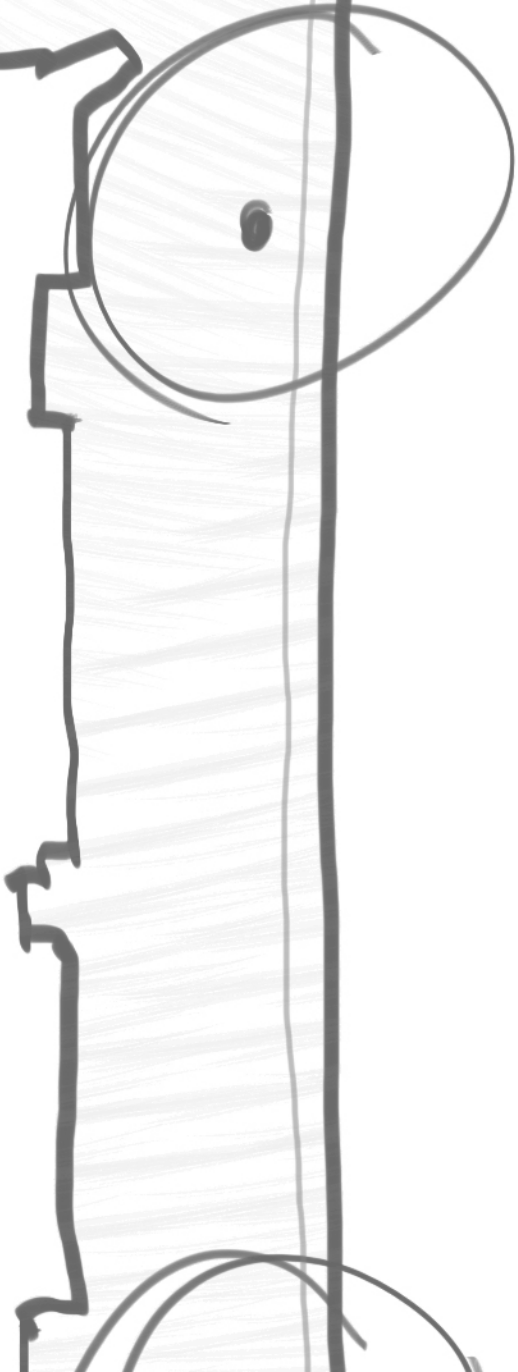


© Disney



MAIN STREET, U.S.A. II

Sheet Number: D





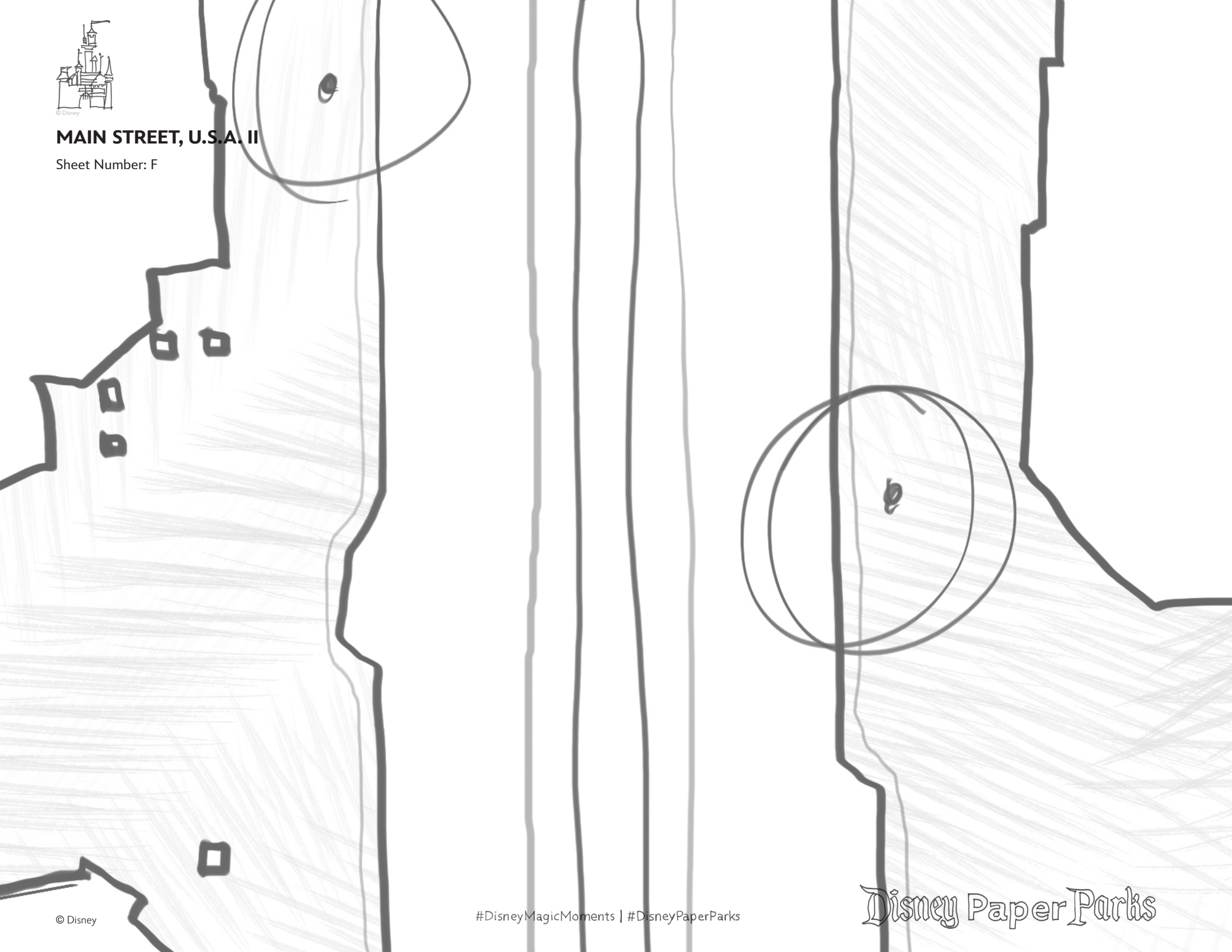
MAIN STREET, U.S.A. II

Sheet Number: E



MAIN STREET, U.S.A. II

Sheet Number: F





Disney Paper Parks

#DisneyMagicMoments | #DisneyPaperParks

HISTORY

The all-new “Magic Happens” parade debuted on Feb 28, 2020 at Disneyland Park! This incredible daytime spectacular celebrates the awe-inspiring moments of magic that are at the heart of so many Disney stories.

This “Magic Happens” float is artistically portraying the Disney animated film, “Frozen 2.” We hope you have fun assembling and coloring your work of art any way you want!

MATERIALS



Glue Stick

Scissors



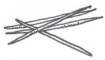
Crayons



School Glue



1 Plastic Straw



4 Wooden Toothpicks

GUIDE

Lines



Valley fold, fold in front



Mountain fold, fold behind



Cut

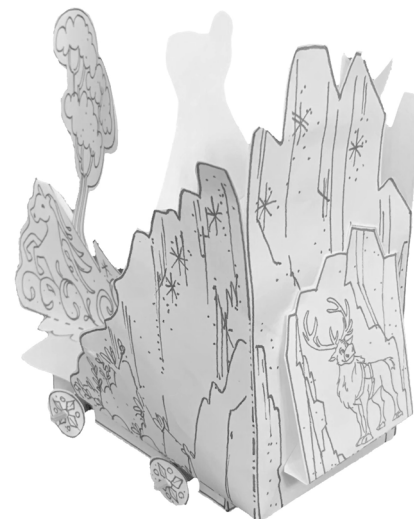


trailer box & wheels/axles

Please Note: When cutting with scissors and working with any of the materials listed above, adult participation and supervision is recommended.

MAGIC HAPPENS PARADE: Frozen 2 (3 pages total)

INSTRUCTIONS



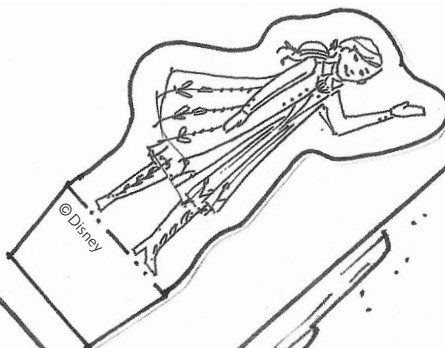
1. Color the pages.
2. Cut along solid line where indicated.
3. Fold tabs and pieces according to Guide.
4. Assemble piece 1 by gluing (glue stick) the tabs to the inside of the flaps to create the trailer box.
5. Assemble wheels and axles by cutting two pieces of straw that are 1 1/2 inches long. Put a wooden toothpick into the straw and pierce one of the paper wheels (piece 2). Apply a small dab of white school glue to keep the paper wheel disc on the toothpick. Pierce the other paper wheel disk on the other side of the toothpick and move it so it is tight against the straw edge. Apply a small dab of white school glue on this side to keep the paper wheel disk on. Trim off the excess toothpick with scissors. Complete step five again so you have two wheel axle assemblies total.
6. Assemble piece 3 to make the base. Use the glue stick to glue the tabs to the inside of the side flaps.
7. Piece 4: Use the glue stick to glue the tab to the back of the float as shown.
8. Assemble piece 6 as shown. Glue piece 7 (trees) in between the horse images and fasten the base with glue (glue stick).
9. Piece 5: Use the glue stick to glue the base of Elsa to the base of piece 5. Fasten piece 5 to the inside with glue (glue stick), behind the star only. See image.
10. Apply Olaf to front tab with glue (glue stick).



Disney Paper Parks

MAGIC HAPPENS PARADE

Frozen 2, page 1



glue tab from piece 4 here

glue base from Elsa's cut out here

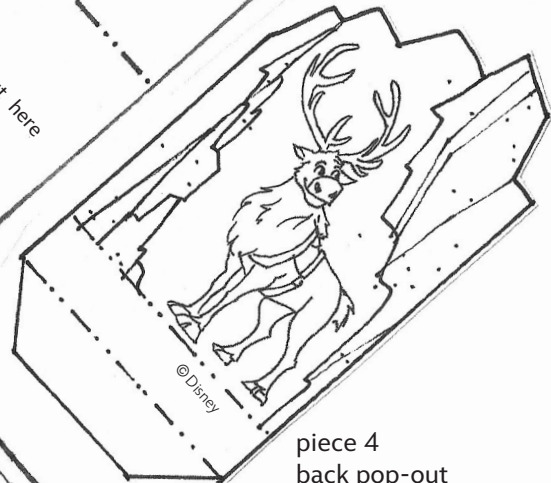
piece 5
star and
snow trail

piece 2
trailer wheels



piece 3
base, sides and
back.

piece 4
back pop-out





Disney Paper Parks

#DisneyMagicMoments | #DisneyPaperParks

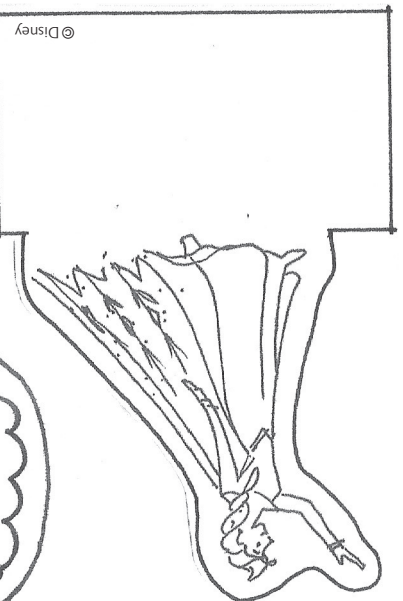
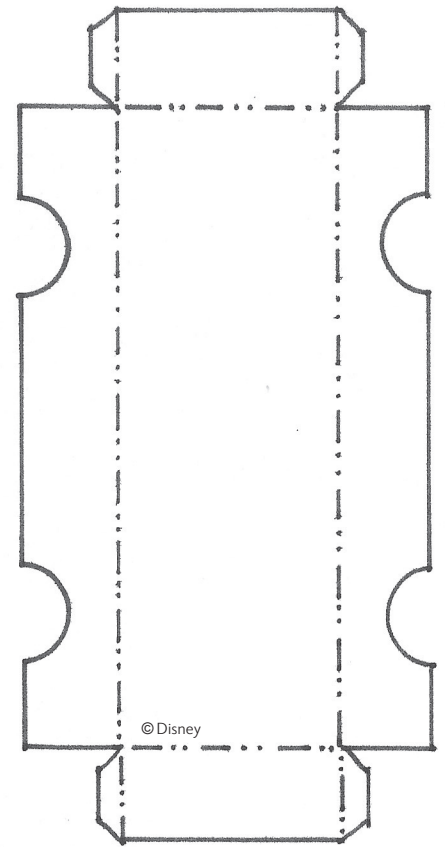
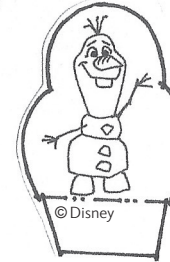
MAGIC HAPPENS PARADE

Frozen 2, page 2

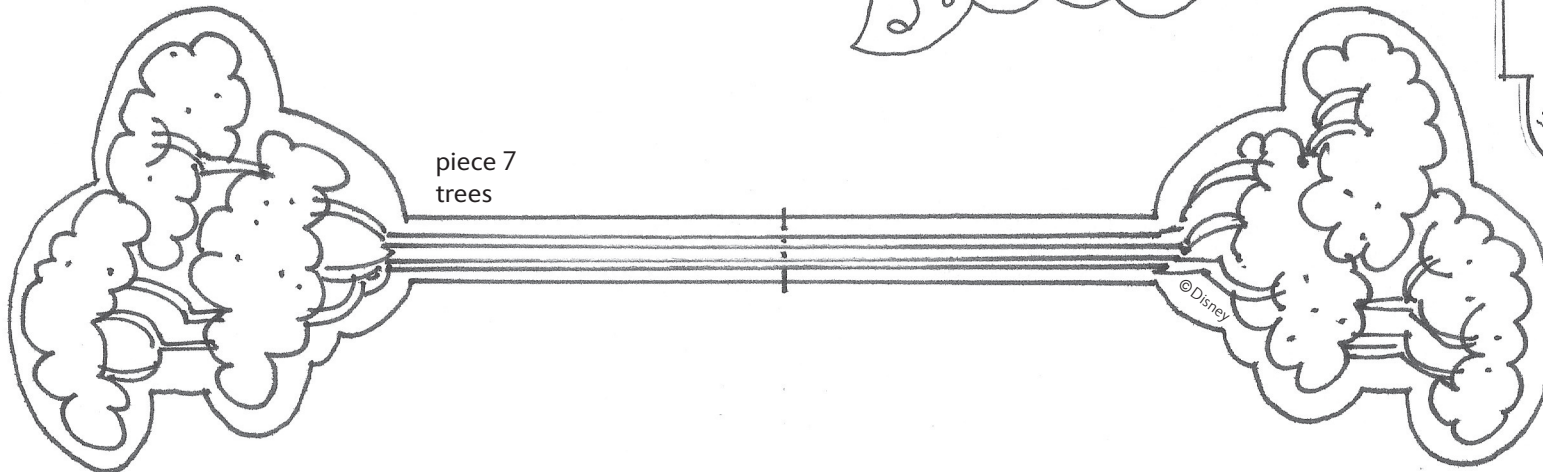
piece 6
platform

cut center out

piece 1
trailer



piece 7
trees





Disney Paper Parks

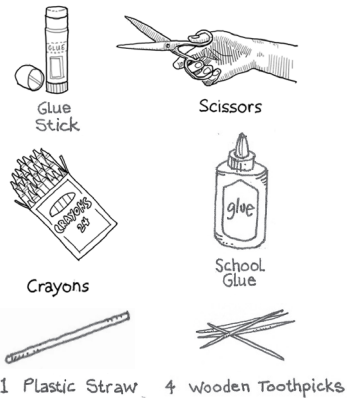
#DisneyMagicMoments | #DisneyPaperParks

HISTORY

The all-new “Magic Happens” parade debuted on Feb 28, 2020 at Disneyland Park! This incredible daytime spectacular celebrates the awe-inspiring moments of magic that are at the heart of so many Disney stories.

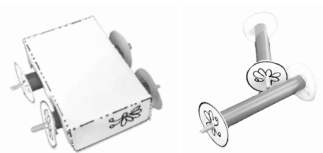
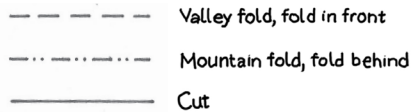
This “Magic Happens” float is a magical pumpkin with a special surprise inside! Cinderella is here to celebrate with you. We hope you have fun assembling and coloring your work of art any way you want!

MATERIALS



GUIDE

Lines



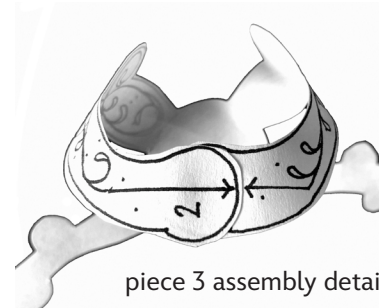
trailer box & wheels/axles

Please Note: When cutting with scissors and working with any of the materials listed above, adult participation and supervision is recommended.

MAGIC HAPPENS PARADE

Cinderella

INSTRUCTIONS



piece 3 assembly detail



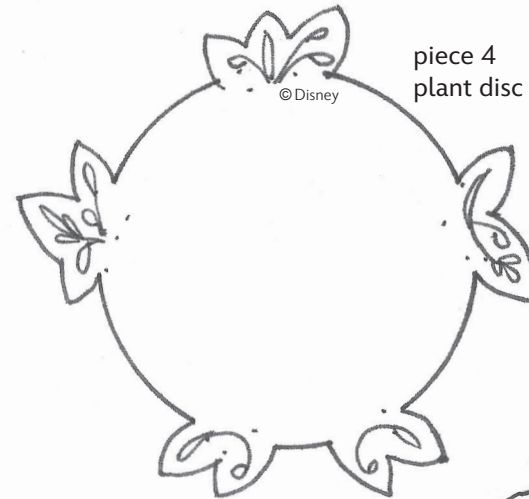
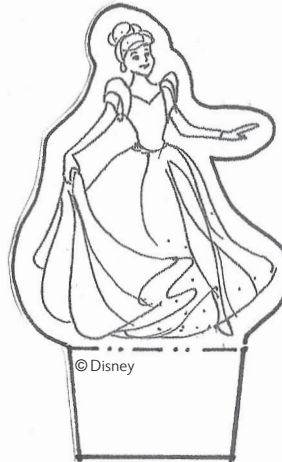
1. Color the pages.
2. Cut along solid line where indicated.
3. Fold tabs and pieces according to Guide.
4. Assemble piece 1 by gluing (glue stick) the tabs to the inside of the flaps to create the trailer box.
5. Assemble wheels and axles by cutting two pieces of straw that are 1 1/2 inches long. Put a wooden toothpick into the straw and pierce one of the paper wheels (piece 2). Apply a small dab of white school glue to keep the paper wheel disc on the toothpick. Pierce the other paper wheel disc on the other side of the toothpick and move it so it is tight against the straw edge. Apply a small dab of white school glue on this side to keep the paper wheel disk on. Trim off the excess toothpick with scissors. Complete step five again so you have two wheel axle assemblies total.
6. Assemble piece 3 to make the pumpkin. Use the glue stick to glue the tabs at the top, and starting with tabs 1 and 2, align arrow so they create a straight line as shown in the image. Glue tab 3 on top of tab 2. Glue tab 4 on top of tab 3 where outline is shown.
7. Piece 5: Use the glue stick to glue the stem on top, position any way you like.
8. Assemble as shown.



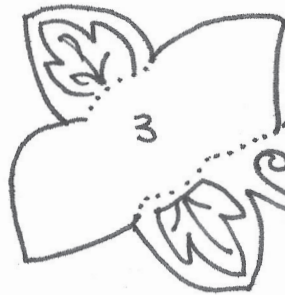
Disney Paper Parks

#DisneyMagicMoments | #DisneyPaperParks

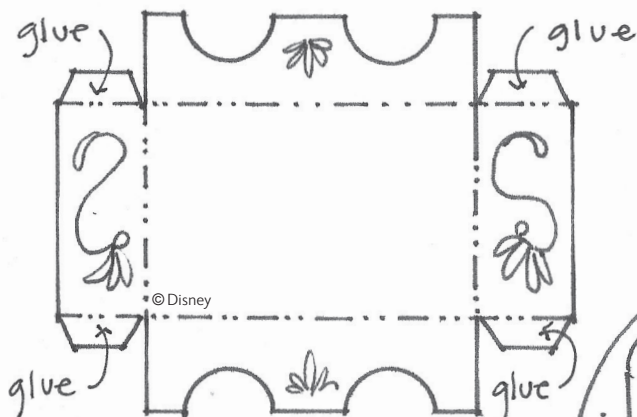
MAGIC HAPPENS PARADE Cinderella



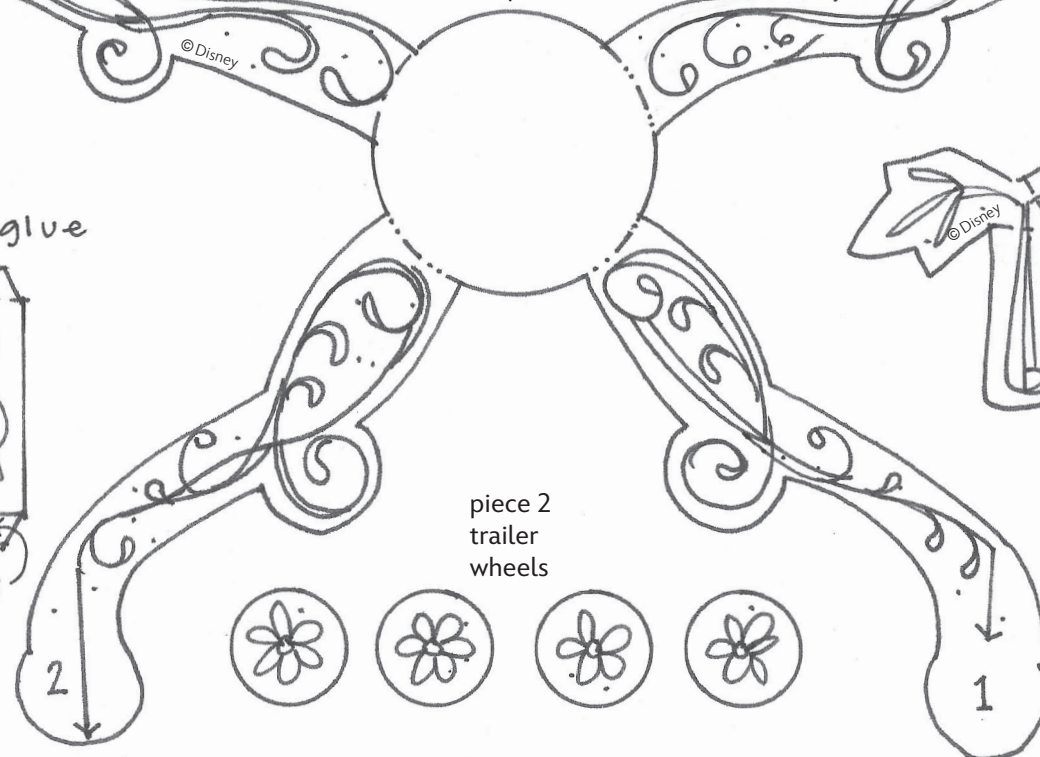
piece 4
plant disc base



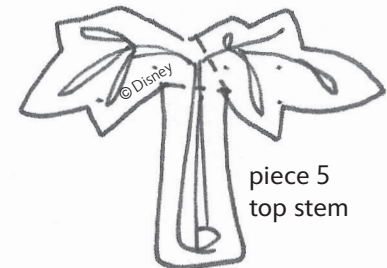
piece 3
Pumpkin



piece 1
trailer



piece 2
trailer
wheels



piece 5
top stem



Disney Paper Parks

#DisneyMagicMoments | #DisneyPaperParks

HISTORY

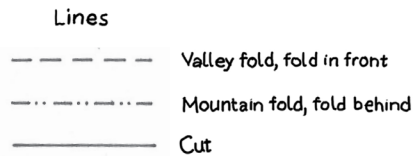
The all-new “Magic Happens” parade debuted on Feb 28, 2020 at Disneyland Park! This incredible daytime spectacular celebrates the awe-inspiring moments of magic that are at the heart of so many Disney stories.

Arthur, Merlin and Archimedes are all here! Arthur finds the magic within himself as he pulls the sword from the stone and claims his place upon the throne. We hope you have fun assembling and coloring your work of art anyway you want!

MATERIALS



GUIDE



trailer box & wheels/axles

Please Note: When cutting with scissors and working with any of the materials listed above, adult participation and supervision is recommended.

MAGIC HAPPENS PARADE

The Sword in the Stone

INSTRUCTIONS



1. Color the pages.
2. Cut along solid line where indicated.
3. Fold tabs and pieces according to Guide.
4. Assemble piece 1 by gluing (glue stick) the tabs to the inside of the flaps to create the trailer box.
5. Assemble wheels and axles by cutting two pieces of straw that are 1 1/2 inches long. Put a wooden toothpick into the straw and pierce one of the paper wheels (piece 2). Apply a small dab of white school glue to keep the paper wheel disc on the toothpick. Pierce the other paper wheel disc on the other side of the toothpick and move it so it is tight against the straw edge. Apply a small dab of white school glue on this side to keep the paper wheel disk on. Trim off the excess toothpick with scissors. Complete step five again so you have two wheel axle assemblies total.
6. Assemble piece 3 to make the cylinder base. Use the glue stick to glue the tabs to the inside of the top.
7. Piece 4: Use the glue stick to glue piece 4 to the back of the cylinder base (piece 3).
8. Merlin: Use the glue stick to attach Merlin to the front of the cylinder base (piece 3). See marked spot for gluing.
9. Assemble as shown.

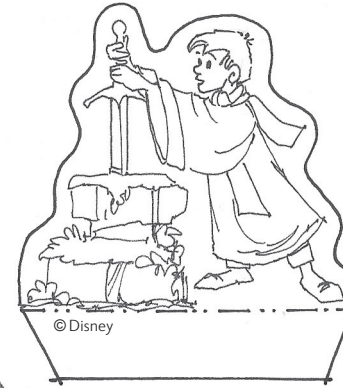


Disney Paper Parks

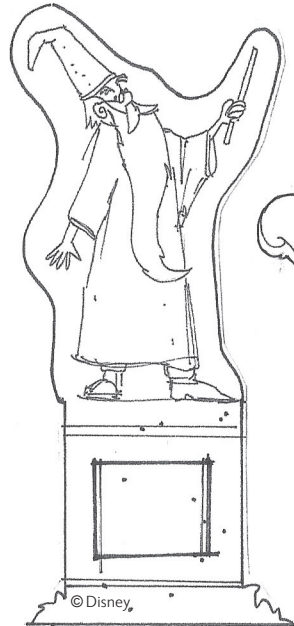
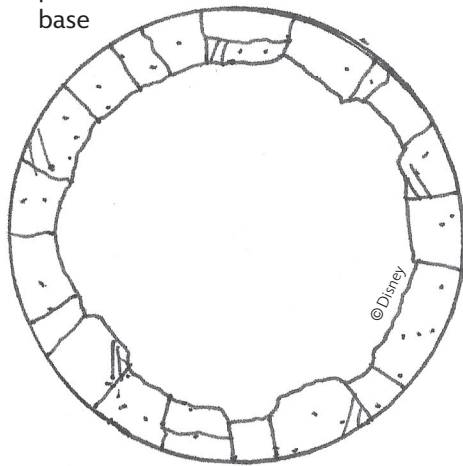
#DisneyMagicMoments | #DisneyPaperParks

MAGIC HAPPENS PARADE: The Sword in the Stone

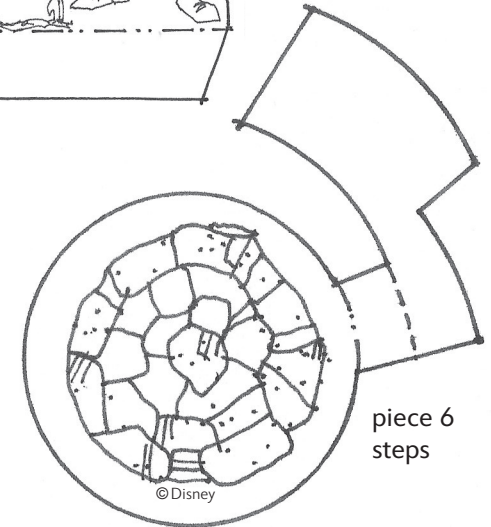
piece 2
trailer wheels



piece 5
plant disc
base

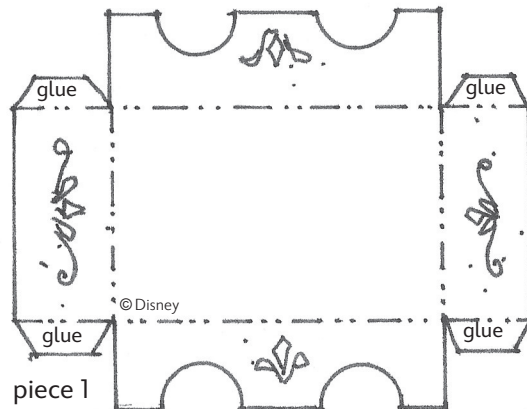
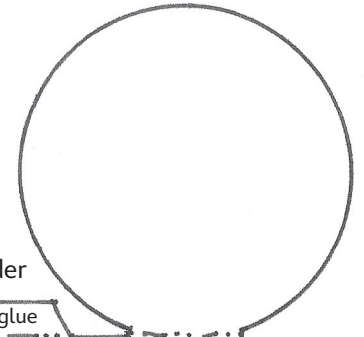


piece 4

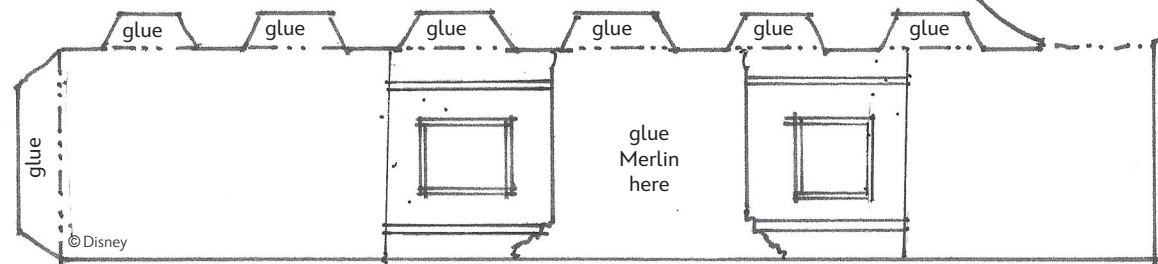


piece 6
steps

piece 3
base cylinder



piece 1
trailer





Disney Paper Parks

#DisneyMagicMoments | #DisneyPaperParks

HISTORY

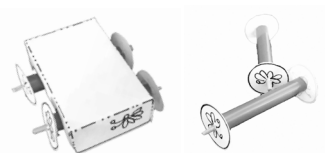
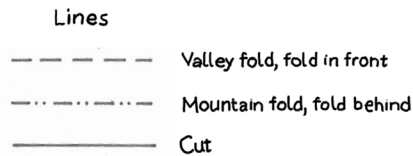
The all-new “Magic Happens” parade debuted on Feb 28, 2020 at Disneyland Park! This incredible daytime spectacular celebrates the awe-inspiring moments of magic that are at the heart of so many Disney stories.

This “Magic Happens” float features Tiana and Naveen dancing the day away in a beautiful southern bayou scene. We hope you have fun assembling and coloring your work of art any way you want!

MATERIALS



GUIDE



trailer box & wheels/axles

Please Note: When cutting with scissors and working with any of the materials listed above, adult participation and supervision is recommended.

MAGIC HAPPENS PARADE

The Princess and the Frog

INSTRUCTIONS



1. Color the pages.
2. Cut along solid line where indicated.
3. Fold tabs and pieces according to Guide.
4. Assemble piece 1 by gluing (glue stick) the tabs to the inside of the flaps to create the trailer box.
5. Assemble wheels and axles by cutting two pieces of straw that are 1 1/2 inches long. Put a wooden toothpick into the straw and pierce one of the paper wheels (piece 2). Apply a small dab of white school glue to keep the paper wheel disc on the toothpick. Pierce the other paper wheel disc on the other side of the toothpick and move it so it is tight against the straw edge. Apply a small dab of white school glue on this side to keep the paper wheel disk on. Trim off the excess toothpick with scissors. Complete step five again so you have two wheel axle assemblies total.
6. Assemble piece 3 to make the cylinder base. Use the glue stick to glue the tabs to the inside of the top.
7. Piece 4: Use the glue stick to glue only the tips of the willow tree together. Glue the base of the tree to the back of the cylinder base (piece 3) as shown. Pinch base of tree to stabilize.
8. Piece 5: Use glue (glue stick) to attach the plants (piece 5) around the outside of the cylinder (piece 3).
9. Assemble as shown.

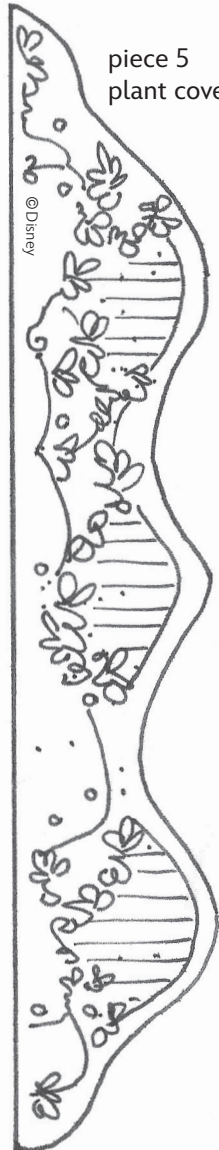


Disney Paper Parks

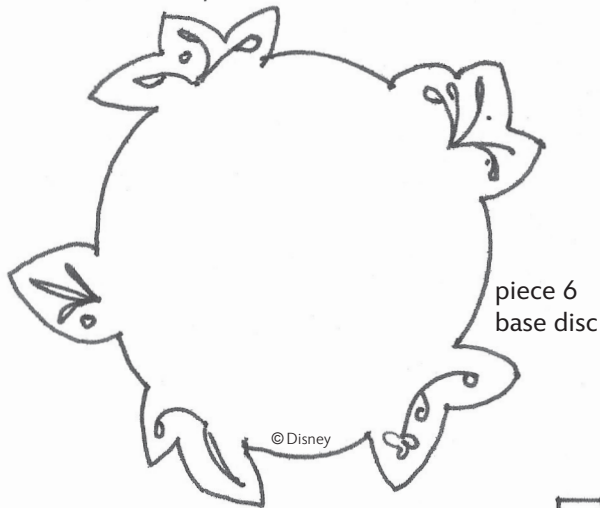
#DisneyMagicMoments | #DisneyPaperParks

MAGIC HAPPENS PARADE

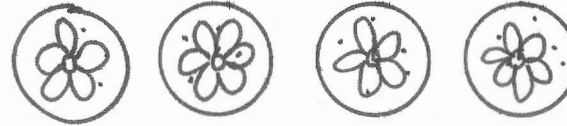
Princess and the Frog



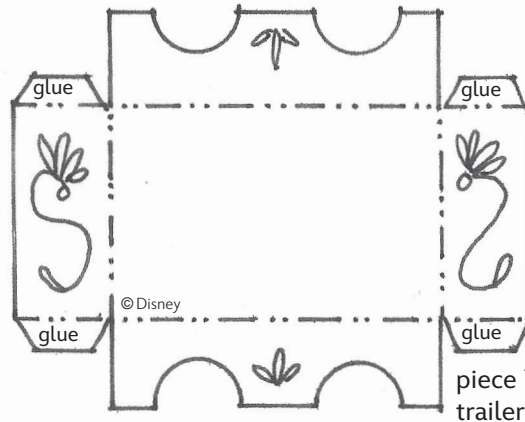
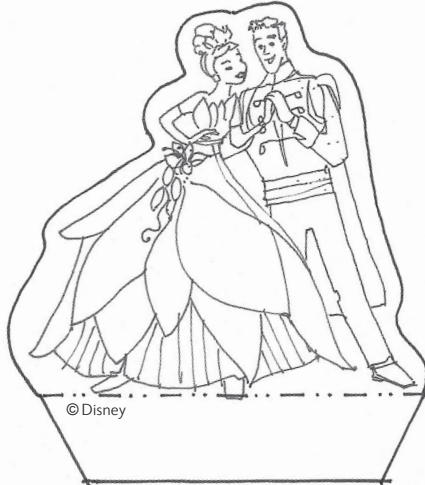
piece 5
plant cover



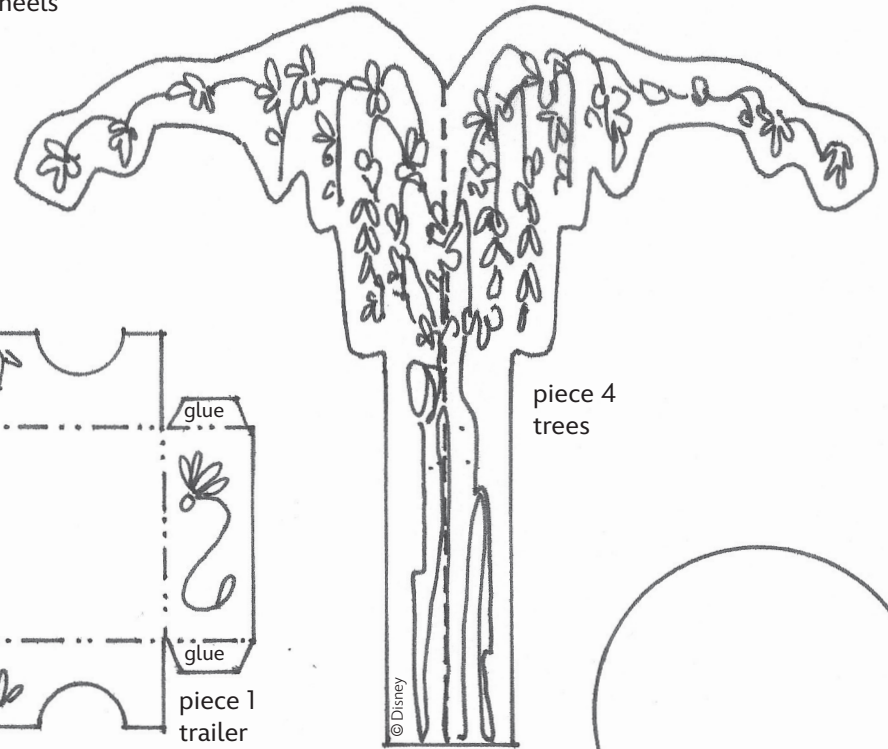
piece 6
base disc



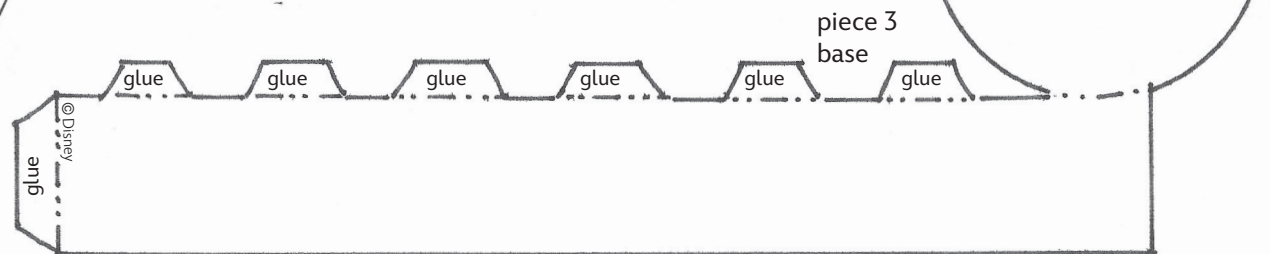
piece 2
trailer wheels



piece 1
trailer



piece 4
trees



piece 3
base



Disney Paper Parks

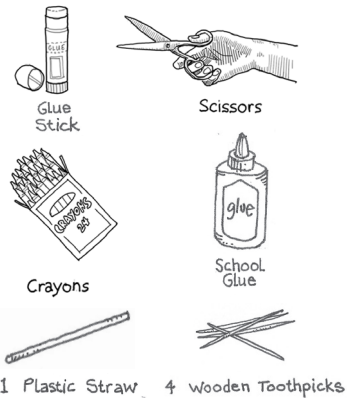
#DisneyMagicMoments | #DisneyPaperParks

HISTORY

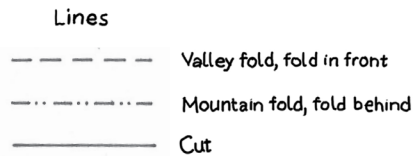
The all-new “Magic Happens” parade debuted on Feb 28, 2020 at Disneyland Park! This incredible daytime spectacular celebrates the awe-inspiring moments of magic that are at the heart of so many Disney stories.

This “Magic Happens” float features Princess Aurora dancing with Prince Phillip, and her gown shimmers between hues of pink and blue. We hope you have fun assembling and coloring your work of art any way you want!

MATERIALS



GUIDE

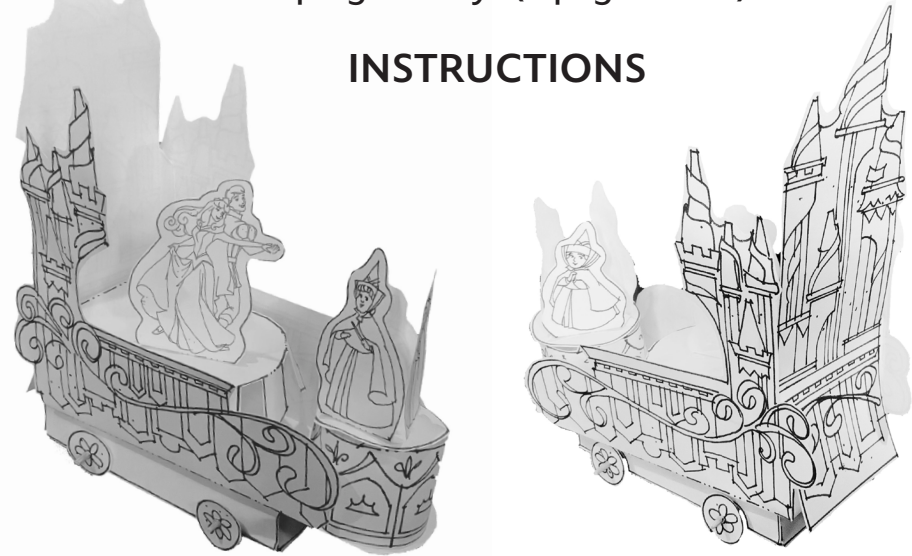


trailer box & wheels/axles

Please Note: When cutting with scissors and working with any of the materials listed above, adult participation and supervision is recommended.

MAGIC HAPPENS PARADE Sleeping Beauty (3 pages total)

INSTRUCTIONS



1. Color the pages.
2. Cut along solid line where indicated.
3. Fold tabs and pieces according to Guide.
4. Assemble piece 1 by gluing (glue stick) the tabs to the inside of the flaps to create the trailer box.
5. Assemble wheels and axles by cutting two pieces of straw that are 1 1/2 inches long. Put a wooden toothpick into the straw and pierce one of the paper wheels (piece 2). Apply a small dab of white school glue to keep the paper wheel disc on the toothpick. Pierce the other paper wheel disk on the other side of the toothpick and move it so it is tight against the straw edge. Apply a small dab of white school glue on this side to keep the paper wheel disk on. Trim off the excess toothpick with scissors. Complete step five again so you have two wheel axle assemblies total.
6. Assemble piece 3 to make the base. Use the glue stick to glue the tabs to the inside of the side flaps.
7. Piece 4: Use the glue stick to glue the tabs to the back of the float as shown.
8. Assemble piece 5 to make the cylinder base. Use the glue stick to glue the tabs to the inside of the top.
9. Assemble as shown.



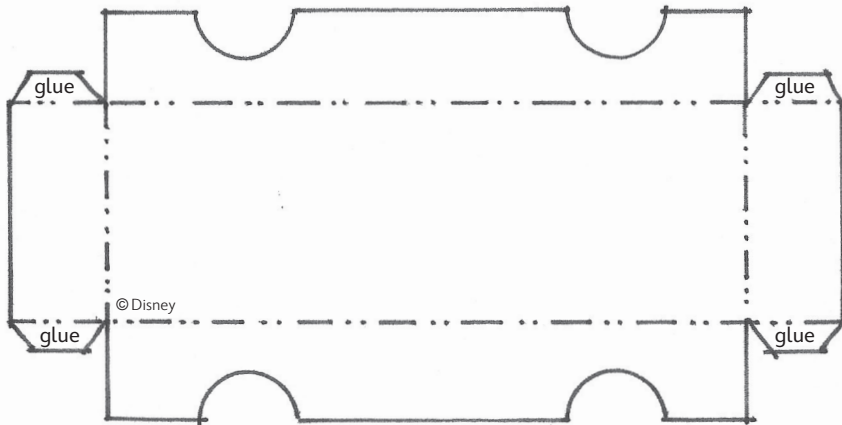
Disney Paper Parks

#DisneyMagicMoments | #DisneyPaperParks

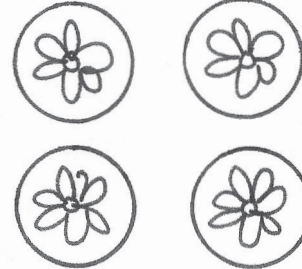
MAGIC HAPPENS PARADE

Sleeping Beauty, page 1

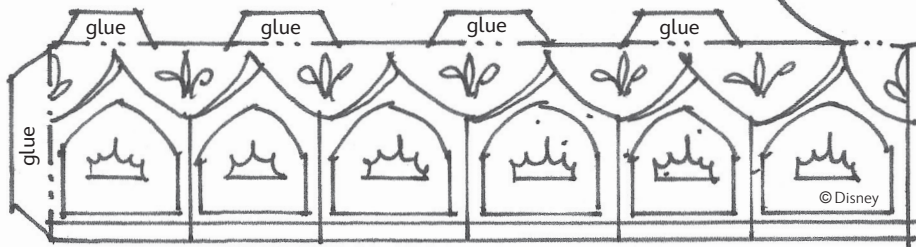
piece 1
trailer



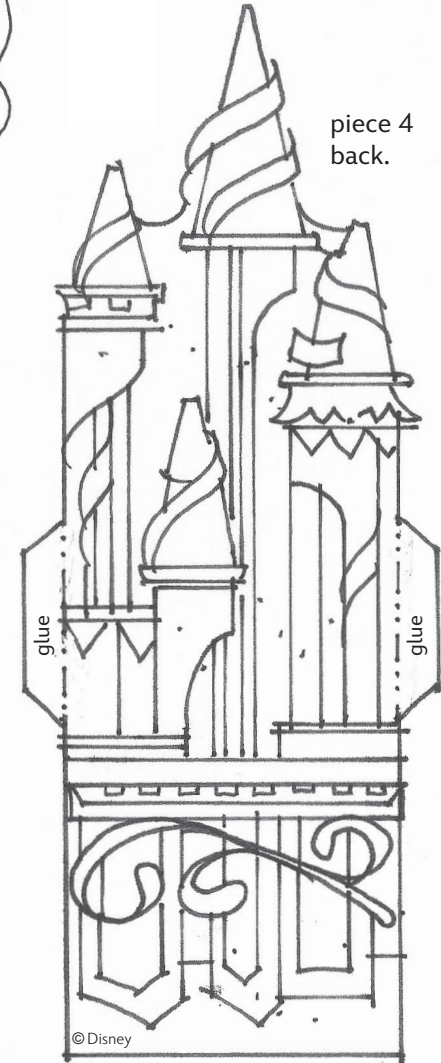
piece 2
trailer wheels



piece 5
podium base for
Flora, Fauna &
Merryweather



piece 4
back.





MAGIC HAPPENS PARADE

Sleeping Beauty, page 2

