

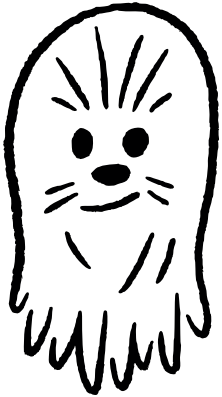
HALLO'MOMENTS

Frightfully Fun Charades

How to play:

1. Print out the character sheet.
2. Color each character.
3. With supervision, cut out the cards along the dotted line.
4. Turn the cards upside down.
5. Each player picks a random card.
6. Player attempts to pantomime that character.
7. The first person to guess the correct character gets a point.

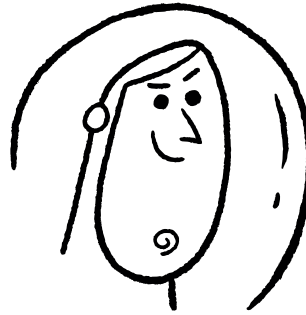
Always use caution when handling sharp objects, hot contents and arts & craft tools. Please supervise children who are helping or nearby.



Chewbacca



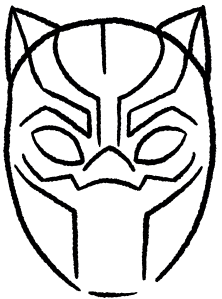
Stitch



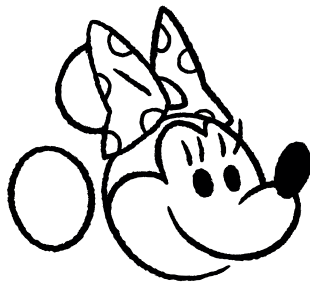
Buzz



Maleficent



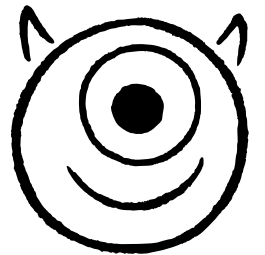
Black Panther



Minnie



Snow White



Mike Wazowski