

Disney Parks Blog

presents:

Disney Paper Parks

* Mad Paper Party *

with
Mickey & Minnie's Fan Faire Attire

designed by Stephanie Jazmines and Amy Young
of:

Walt Disney IMAGINEERING



Disney Paper Parks

#DisneyMagicMoments | #DisneyPaperParks

HISTORY

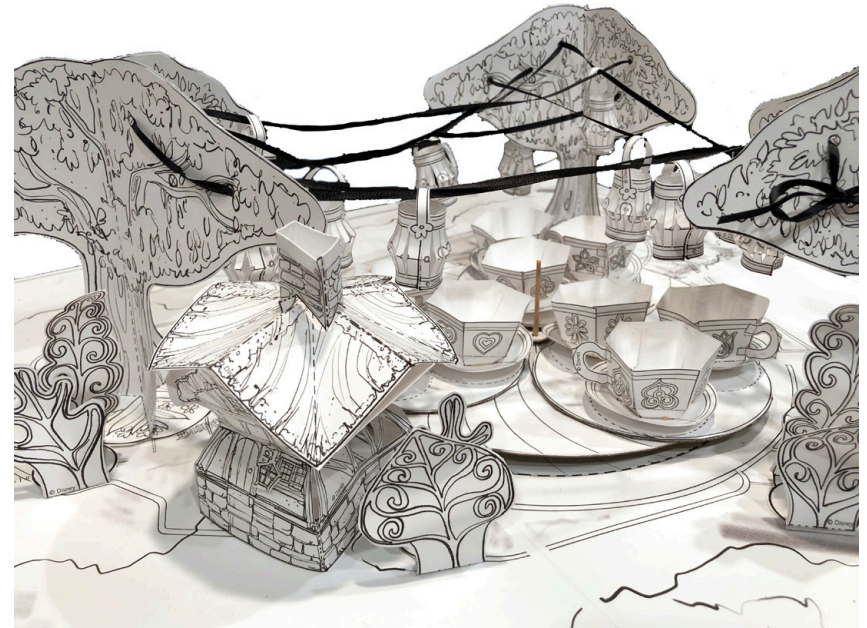
Are you ready to join the most iconic Unbirthday Party imaginable? Inspired by the tea party scene in the 1951 adaptation of Lewis Carroll's "Alice in Wonderland," the Mad Tea Party opened with Disneyland® Park on July 17, 1955. The attraction consists of turntables that rotate while the guests can control how fast they spin their own teacups.

The iconic teacups were designed by Disney Legend, Mary Blair, and remain one of the most treasured experiences at Disneyland as well as all the other Disney parks worldwide.

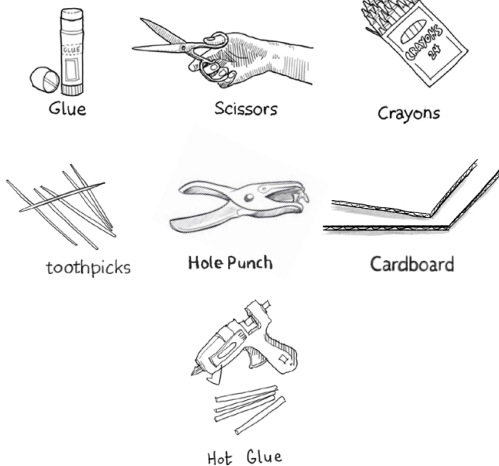
MAD TEA PARTY

Sheet Numbers: A, B, C, D + 1, 2, 3, 4, 5, 6, 7, 8, 9, 10, 11, 12

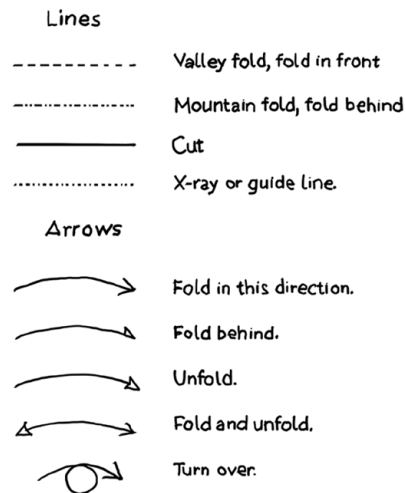
INSTRUCTIONS



MATERIALS



GUIDE



1. Lay out the plan sheets as shown in the diagram below. You can tape them together or leave them loose for easy storage.
2. Sheet 1: Mount to cardboard and carefully cut out the Spiral Circle and two smaller circles. The large circle will be the base of the teacups. Punch holes as indicated by the small circles. For the base, these holes should be wider than a toothpick to allow for easy movement.
3. Using hot glue or liquid glue, attach a toothpick (with the pointed ends cut off) to the small bottom circle. Stick the toothpick through the Spiral Circle. Slide the small top circle through and make a tight sandwich between the 3 layers. Add a dab of glue where the toothpick is to keep it in place. This will act as a handle for your top.

Please Note: When cutting with scissors and working with any of the materials listed above, adult participation and supervision is recommended.



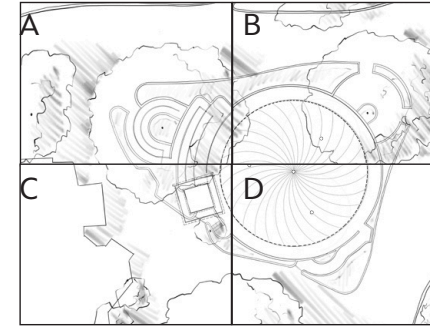
MAD TEA PARTY

Sheet Numbers: A, B, C, D + 1, 2, 3, 4, 5, 6, 7, 8, 9, 10, 11, 12

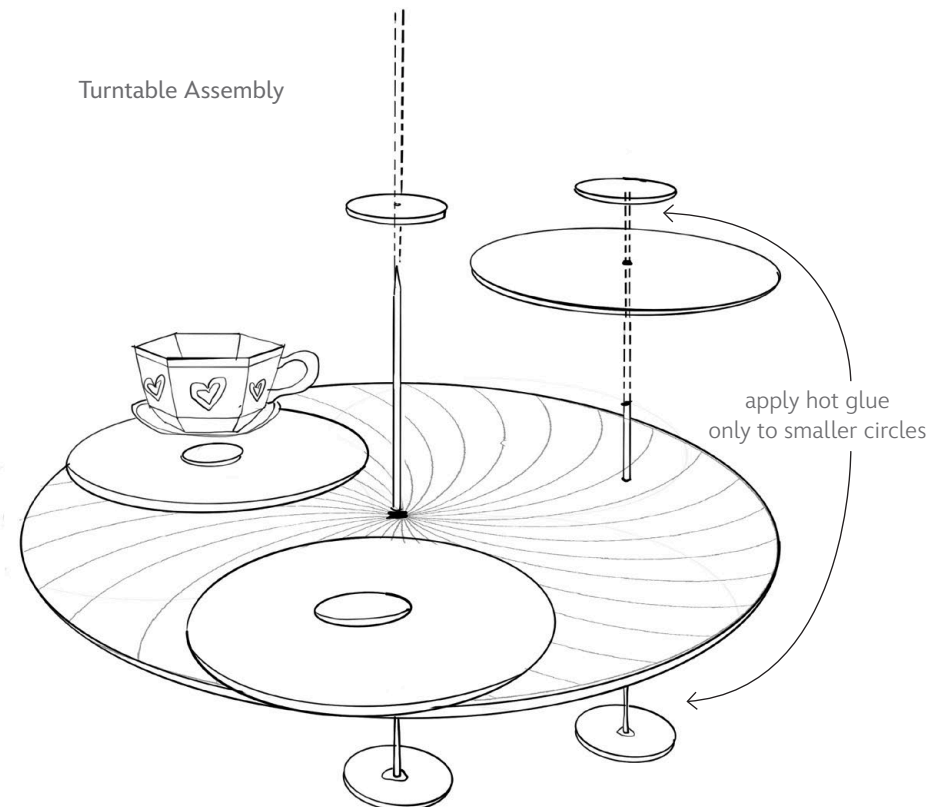
INSTRUCTIONS

4. Sheets 2, 3, and 4: Cut out all the pieces and make separate piles for each individual teacup. Each cup will consist of 4 pieces: the cup, the handle, the saucer top, and the saucer. Fold and glue where indicated. Make sure the overlap is on the inside of the cup. Glue the bottom of the cut to the saucer. Optional: These teacups may also be made to spin using the same methods outlined for the Teacup Base.
5. Glue the Teacup Base and the two smaller circles to cardboard. Carefully cut out and make a hole in the center, where indicated. The hole should be wider than a toothpick to allow for easy movement.
6. Using hot glue or liquid glue, attach a toothpick (with the pointed ends cut off) to the small bottom circle. Stick the toothpick through the Spiral Circle *and* the Teacup Base. Cut the toothpick slightly above the Teacup Base, so it sticks up a little. Add a dot of glue to the top of the toothpick and cover with the small top circle.
7. Glue the bottom of the teacup saucers where indicated on the teacup base. Try to keep the handles within the circle perimeter.
8. Sheet 5: To make the Operator's Cottage, cut out all pieces, and fold as shown in the guide. Glue tabs to form the Cottage Walls.
9. Fold and attach sconces as shown in image. For Cottage Roof assembly, fold and glue all tabs as shown in image and guide. For the Chimney, fold top edge down and then fold sides. Glue side tab to make the chimney shape and glue the 2 tabs to the roof as shown in image.

Plan Layout



Turntable Assembly





Disney Paper Parks

#DisneyMagicMoments | #DisneyPaperParks

MAD TEA PARTY

Sheet Numbers: A, B, C, D + 1, 2, 3, 4, 5, 6, 7, 8, 9, 10, 11, 12

INSTRUCTIONS



Tree Assembly



Lantern Assembly

10. Sheet 6: Making the leaves: Using the glue stick, glue each leaf together so they are all double sided. Take the leaf base and fold as shown in image. Glue each leaf by matching up the grey art with the line art. Bend and form the leaves as shown so they are wavy and lean against each other for support.
11. Sheets 7 - 12: Each Tree is made of 3 pieces (Pieces 1, 2, 3). For assembly, fold according to guide and using glue stick, glue backs of trees together to form an X structure. Make a hole in the circles with an X in the middle. This is where the string will be laced to hold the hanging lanterns. On the tree base, form circle base and glue in place on plan making sure the 2 tree parts with the holes are toward the teacups. See image.
12. Before gluing tabs on the lanterns, fold lanterns lengthwise and as noted in the guide. Some are folded twice and some just once. Snip the lantern body, while folded, along all the grey lines in the center. Then glue tab to form a cylinder. Push top of the lantern down so it can take shape. Take the Lantern Hanger and glue to each side like a basket handle.
13. In the tree holes, lace the string back and forth making sure to add the lanterns as you go. Or attach lantern hangers as you place them.
14. Now put everything together as you like. While holding the toothpick in place, spin the Spiral Base and your Mad Tea Party can begin!



MAD TEA PARTY

Sheet Number: A

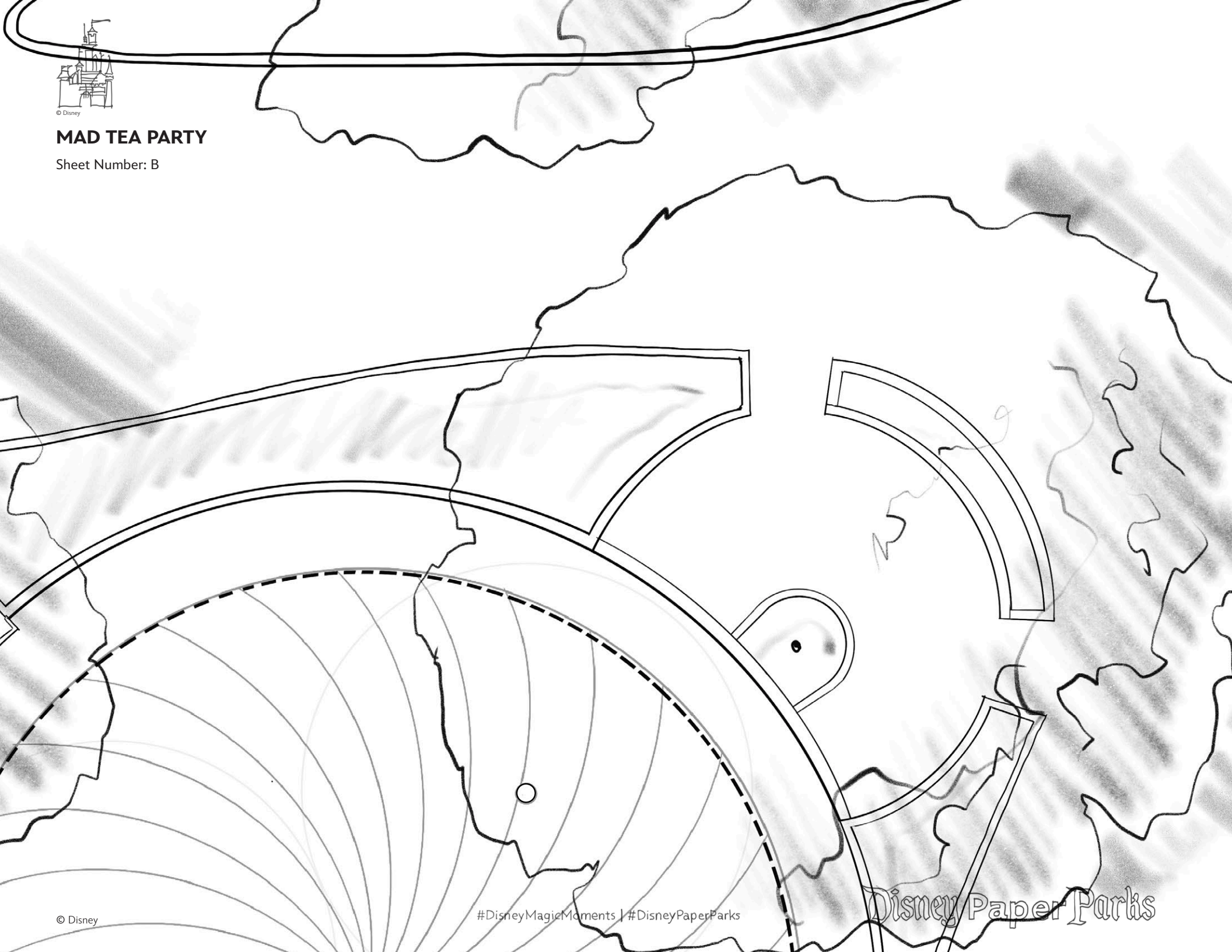




© Disney

MAD TEA PARTY

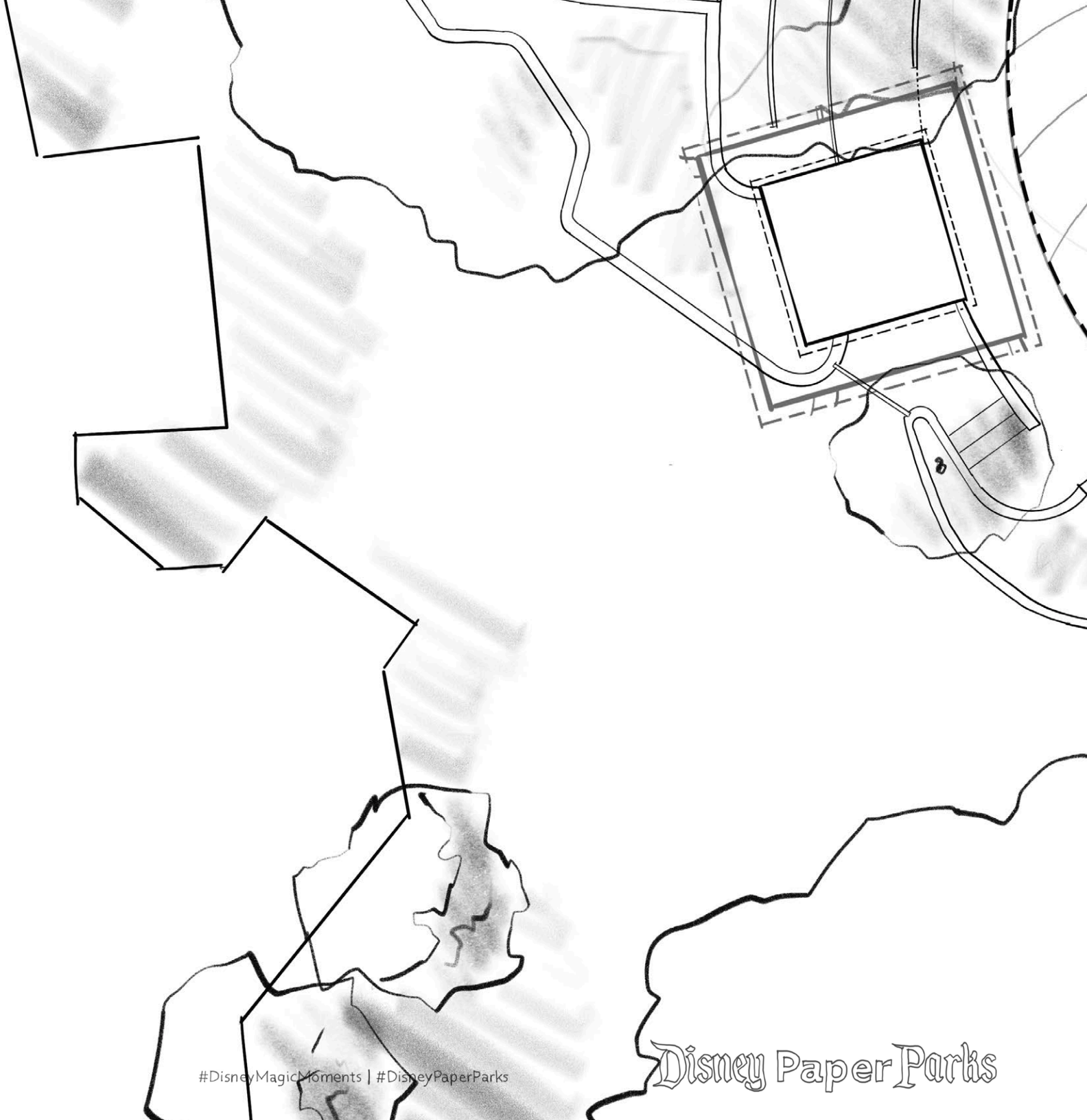
Sheet Number: B





MAD TEA PARTY

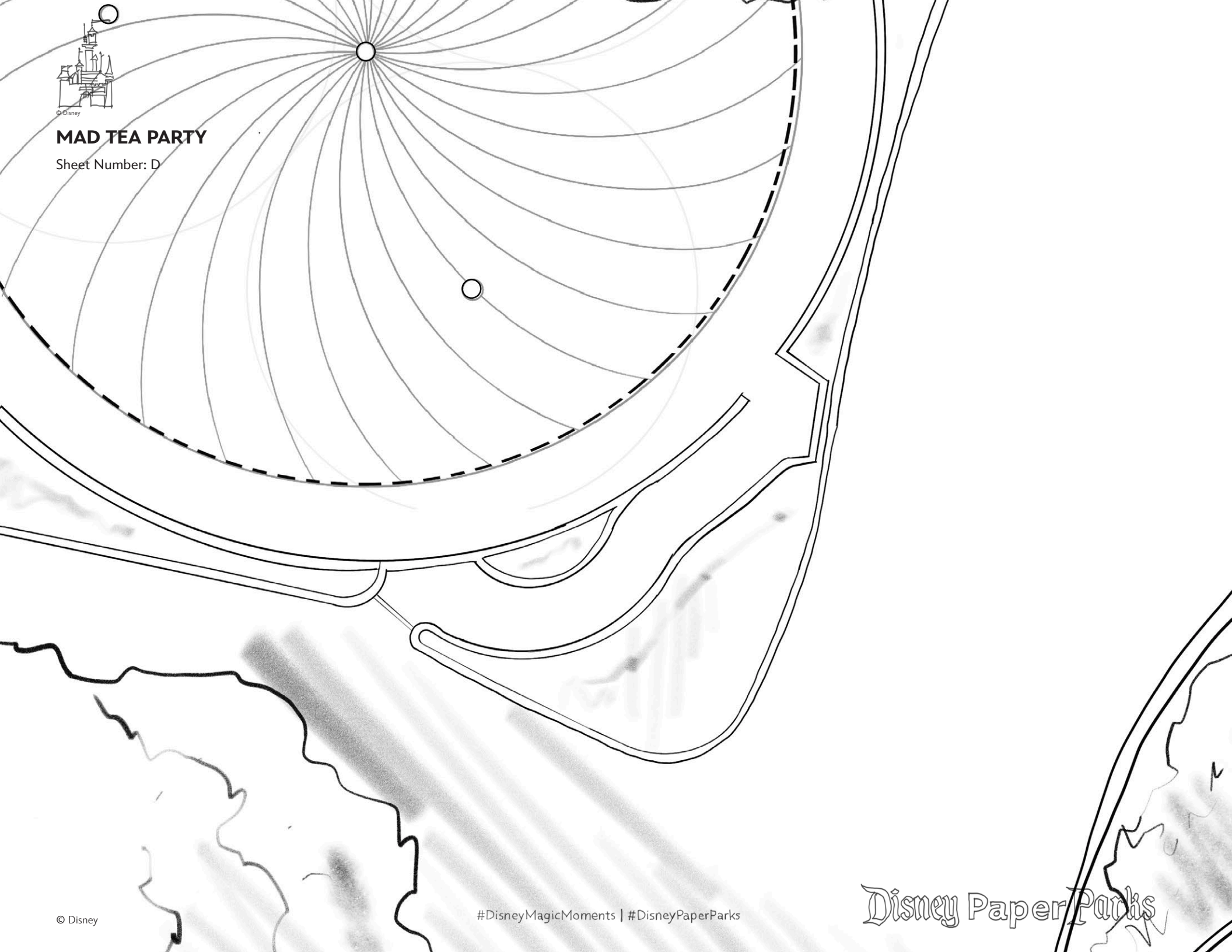
Sheet Number: C





MAD TEA PARTY

Sheet Number: D



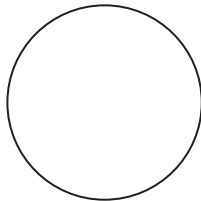


MAD TEA PARTY

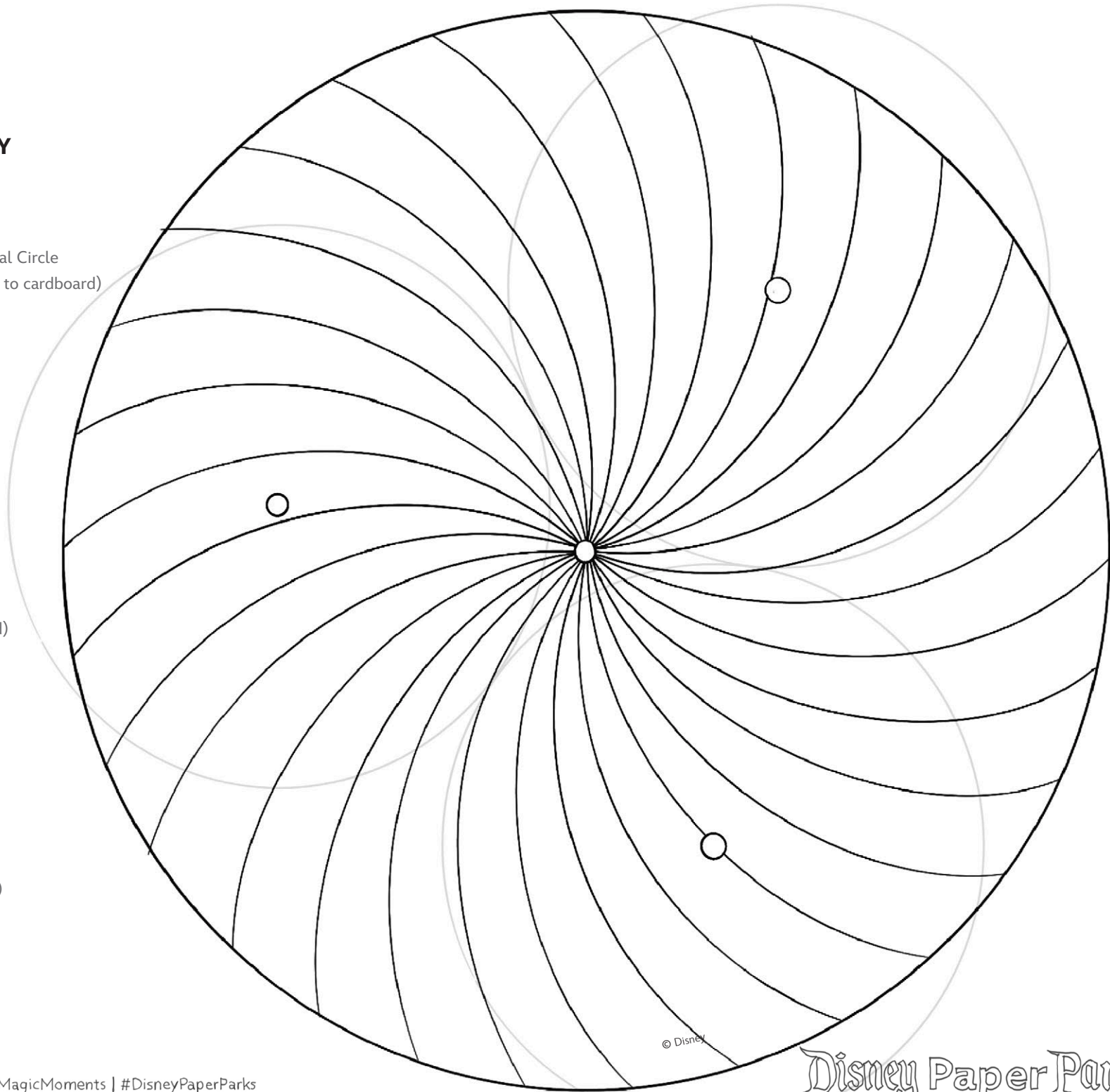
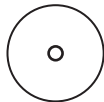
Sheet Number: 1

Spiral Circle
(mount to cardboard)

Bottom Piece
(mount to cardboard)



Top Piece
(mount to cardboard)

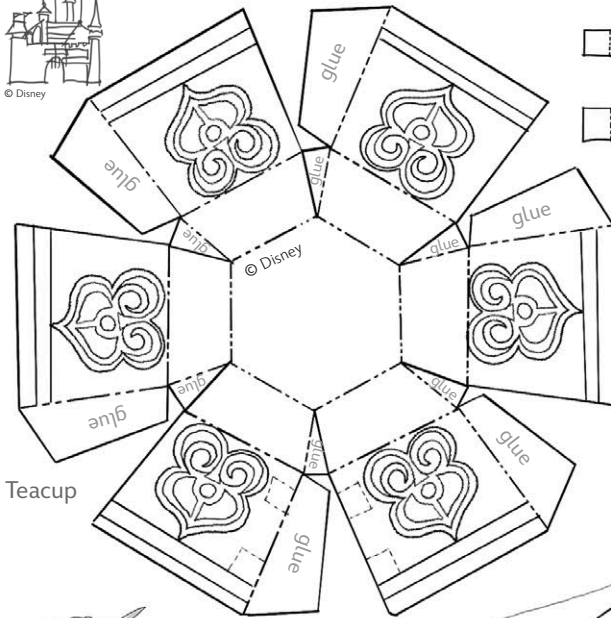




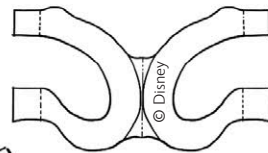
MAD TEA PARTY

Sheet Number: 2

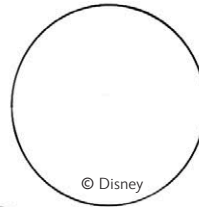
TEACUP BASE
(mount to cardboard)



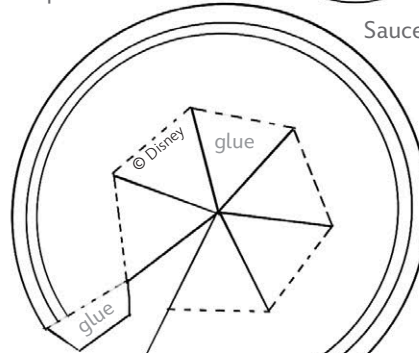
Teacup



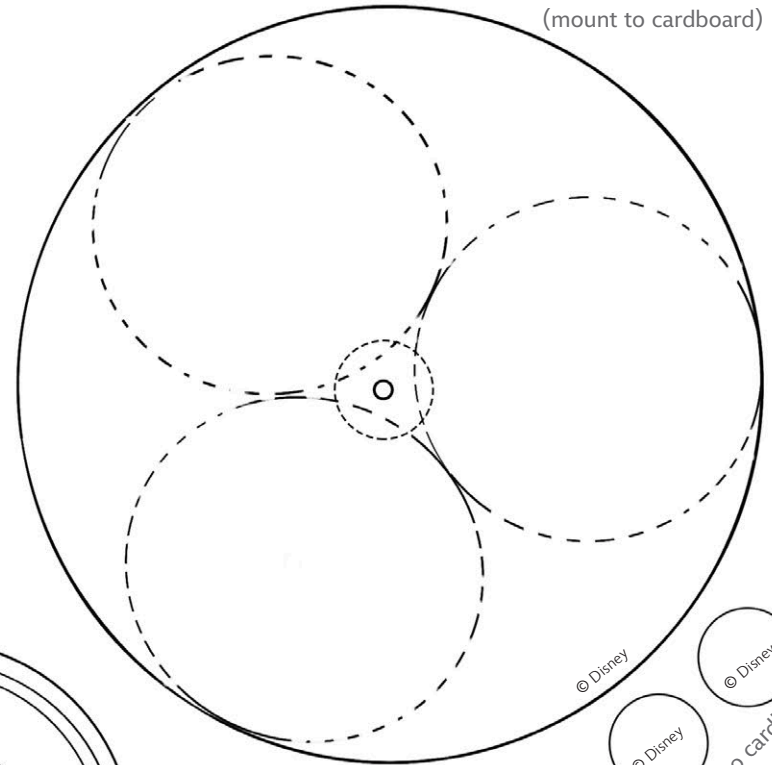
Teacup Handle



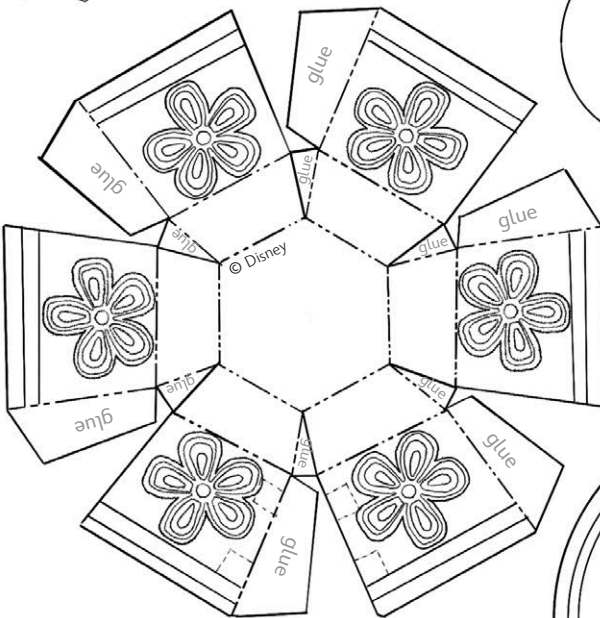
Saucer Top



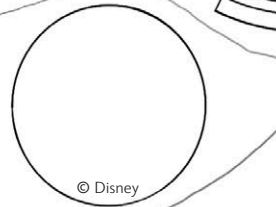
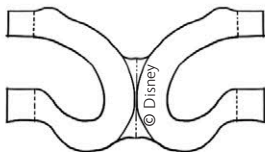
Saucer



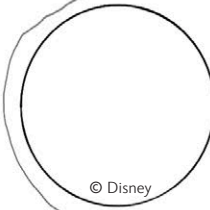
(mount to cardboard)



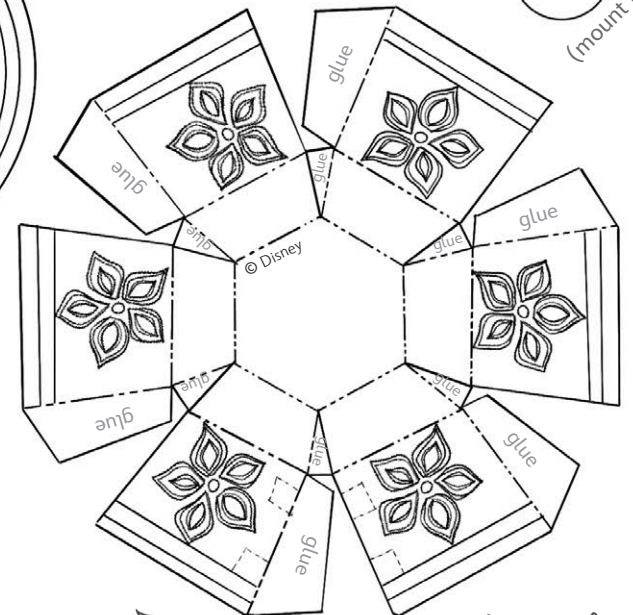
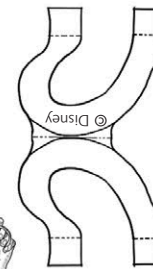
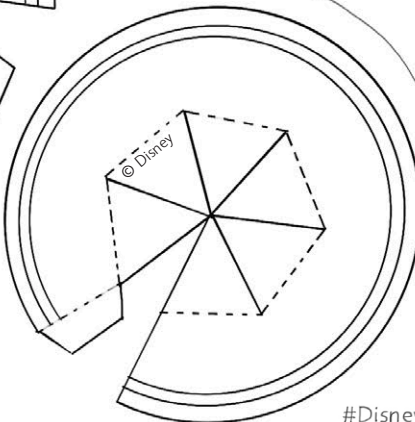
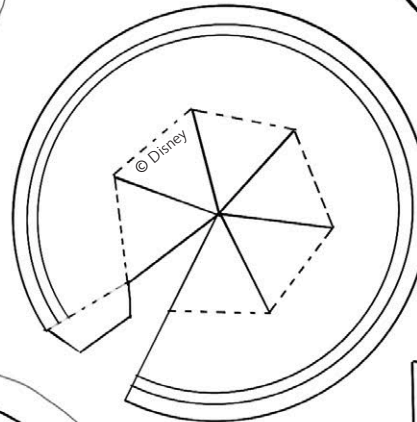
TEACUPS



© Disney



© Disney



© Disney

#DisneyMagicMoments | #DisneyPaperParks

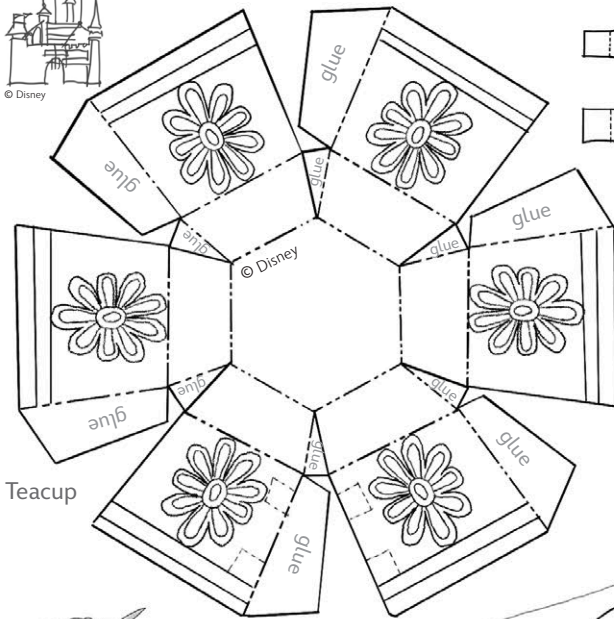
Disney Paper Parks



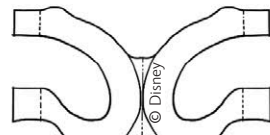
MAD TEA PARTY

Sheet Number: 3

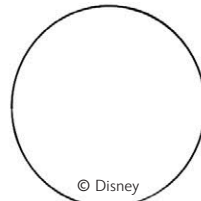
TEACUP BASE
(mount to cardboard)



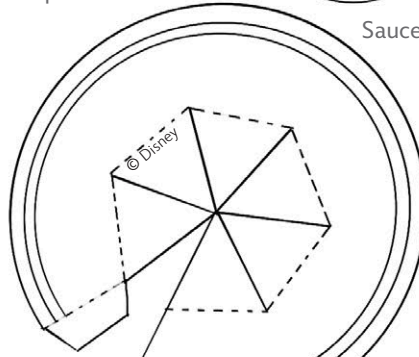
Teacup



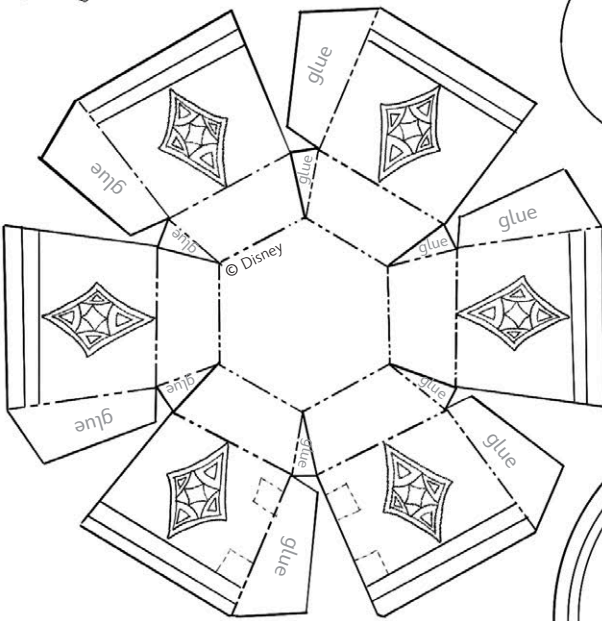
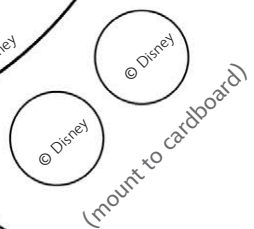
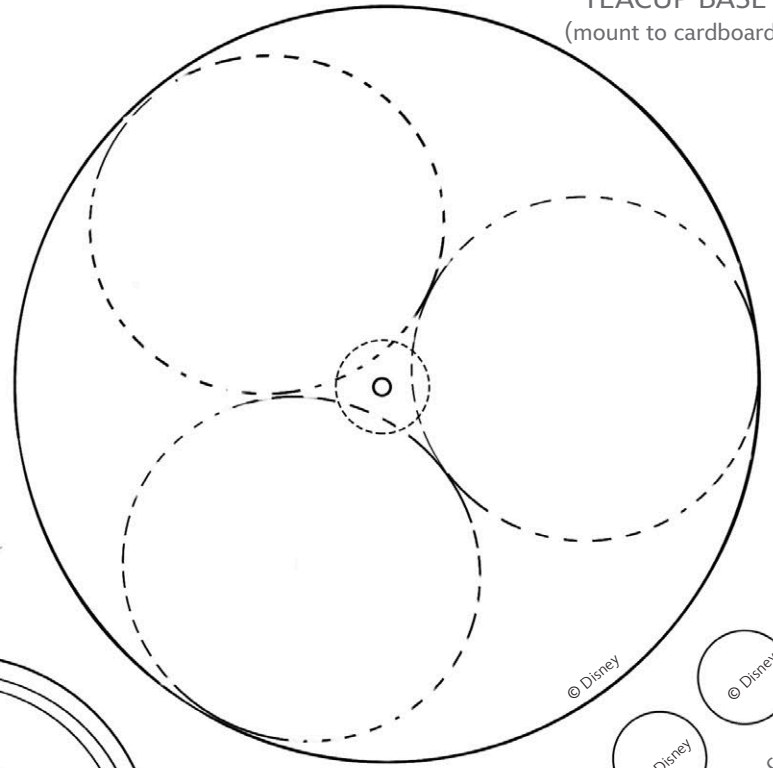
Teacup Handle



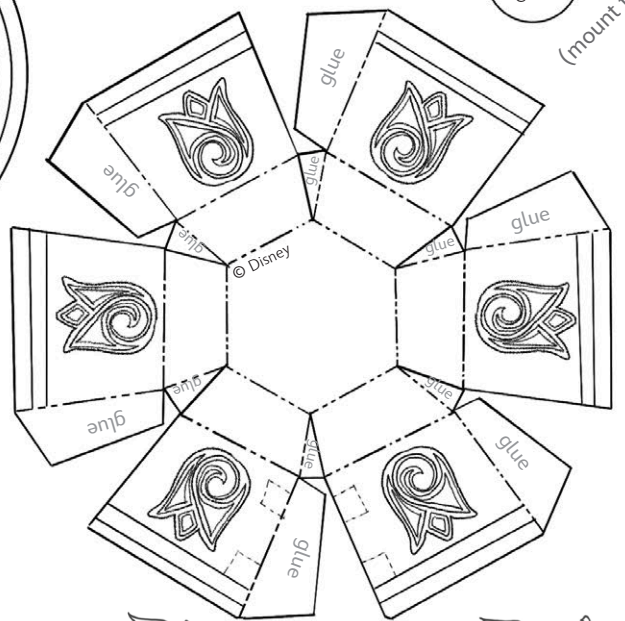
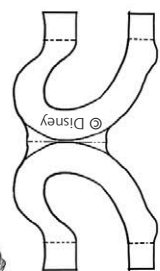
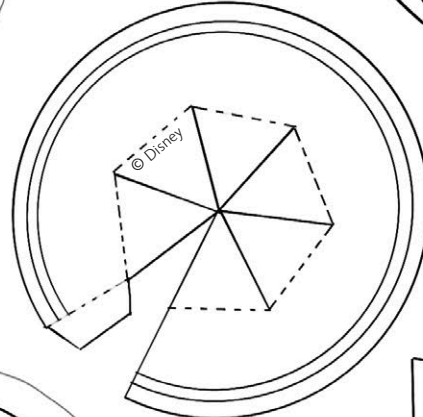
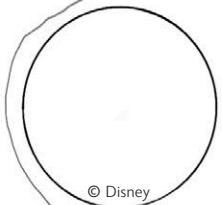
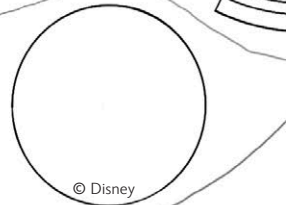
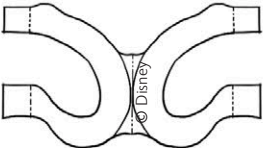
Saucer Top



Saucer



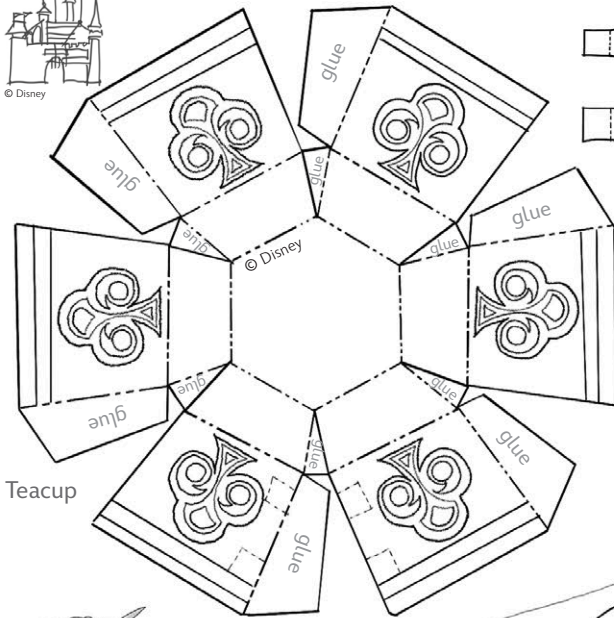
TEACUPS



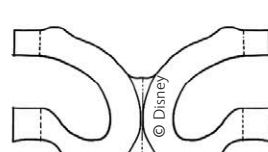


MAD TEA PARTY

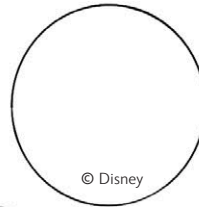
Sheet Number: 4



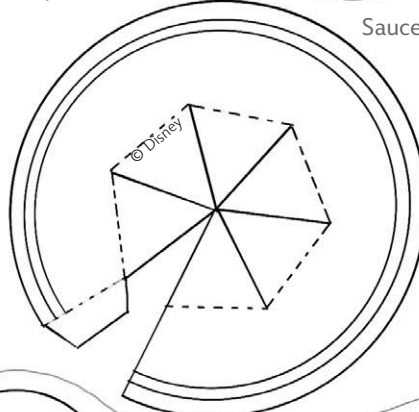
Teacup



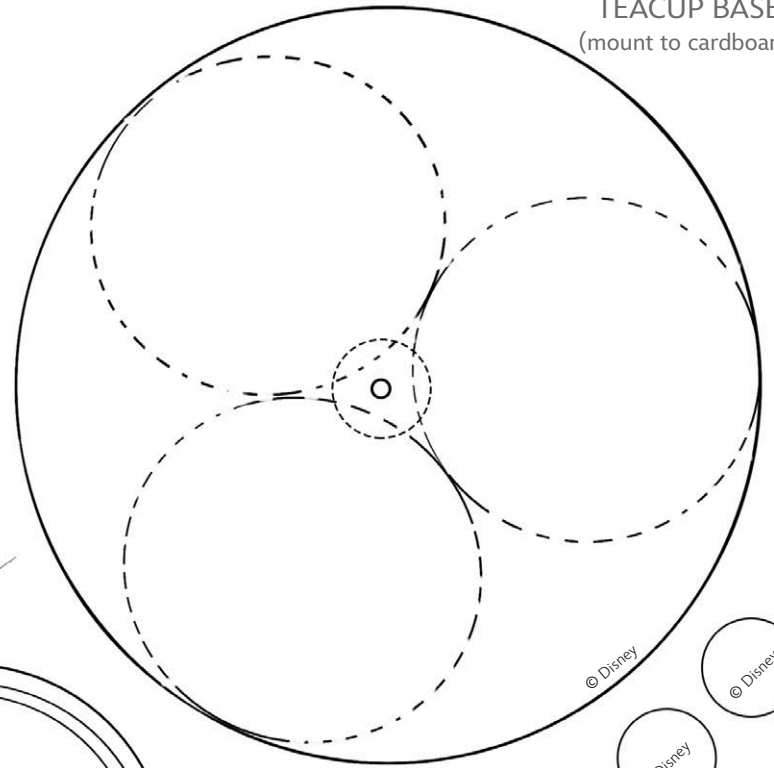
Teacup Handle



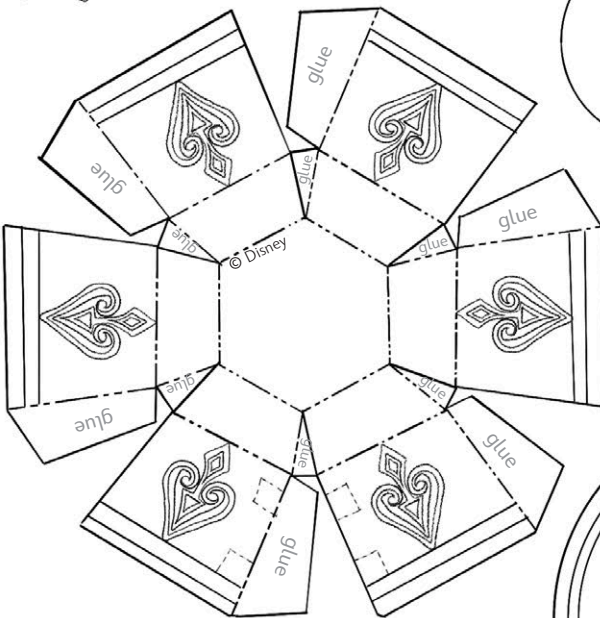
Saucer Top



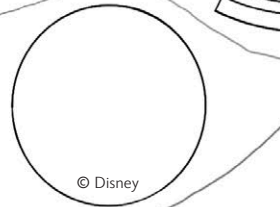
Saucer



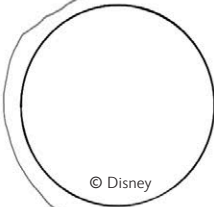
TEACUP BASE
(mount to cardboard)



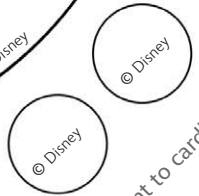
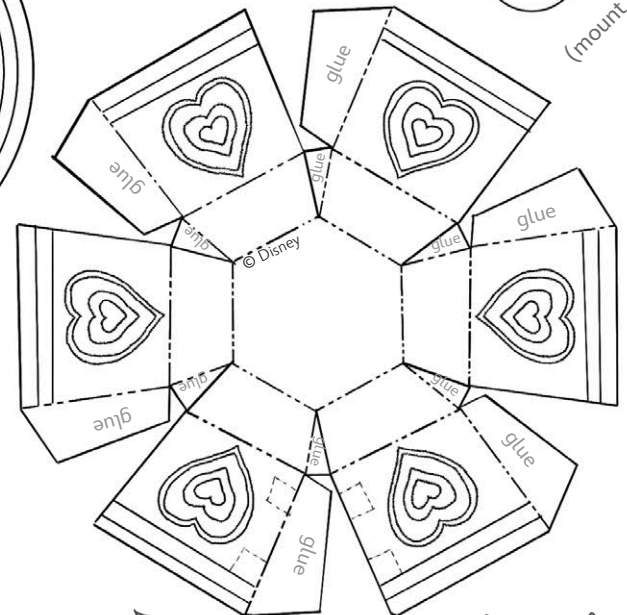
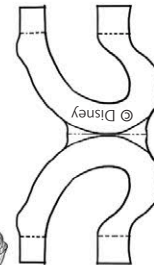
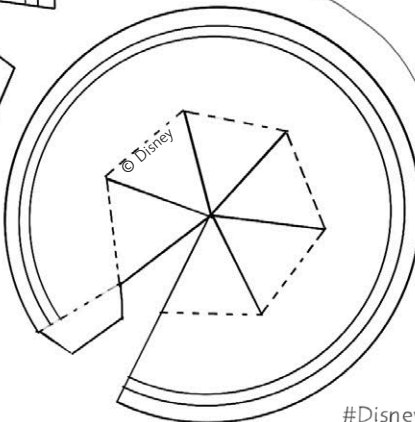
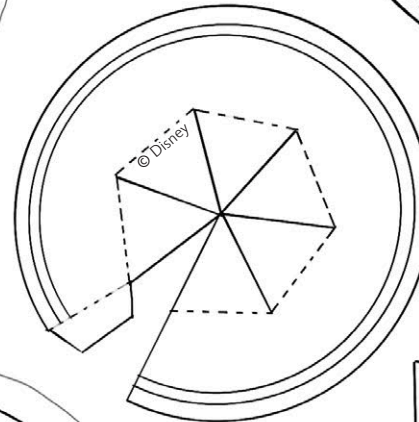
TEACUPS



© Disney



© Disney



© Disney

© Disney

(mount to cardboard)



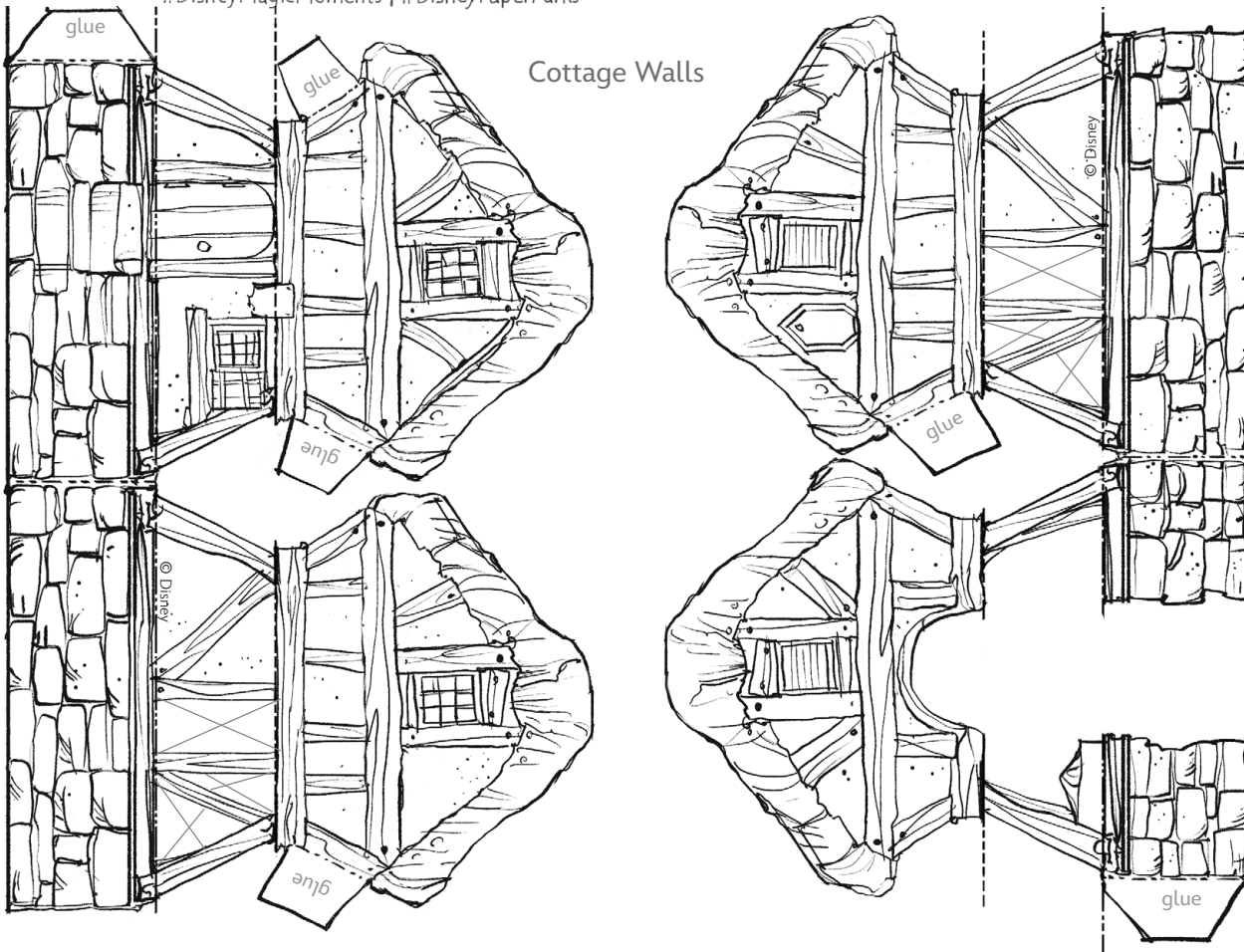
Disney Paper Parks

#DisneyMagicMoments | #DisneyPaperParks

MAD TEA PARTY

Sheet Number: 5

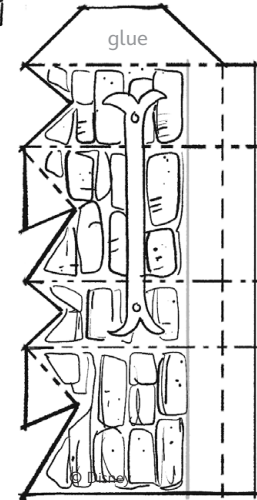
Cottage Walls



OPERATOR'S COTTAGE

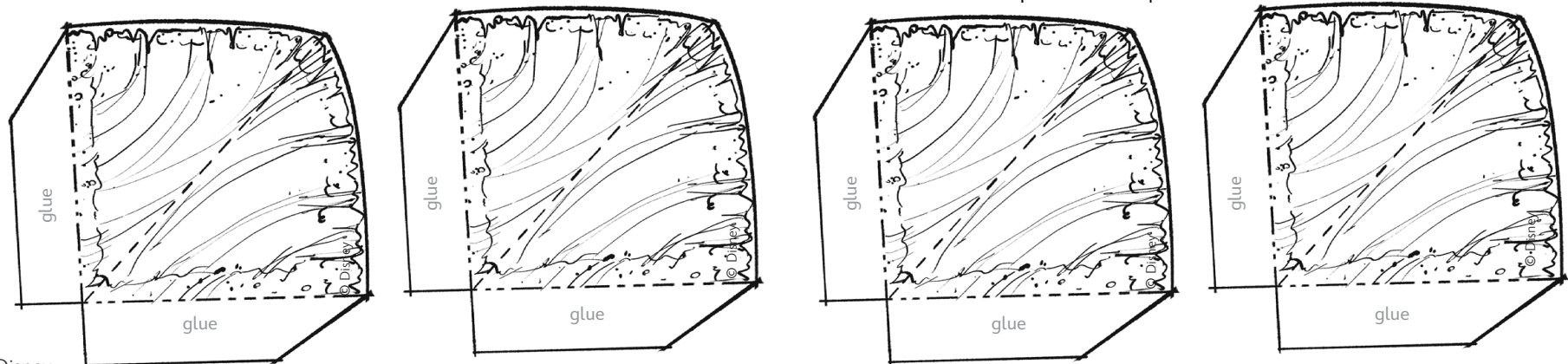


Sconces



Chimney

Cottage Roof



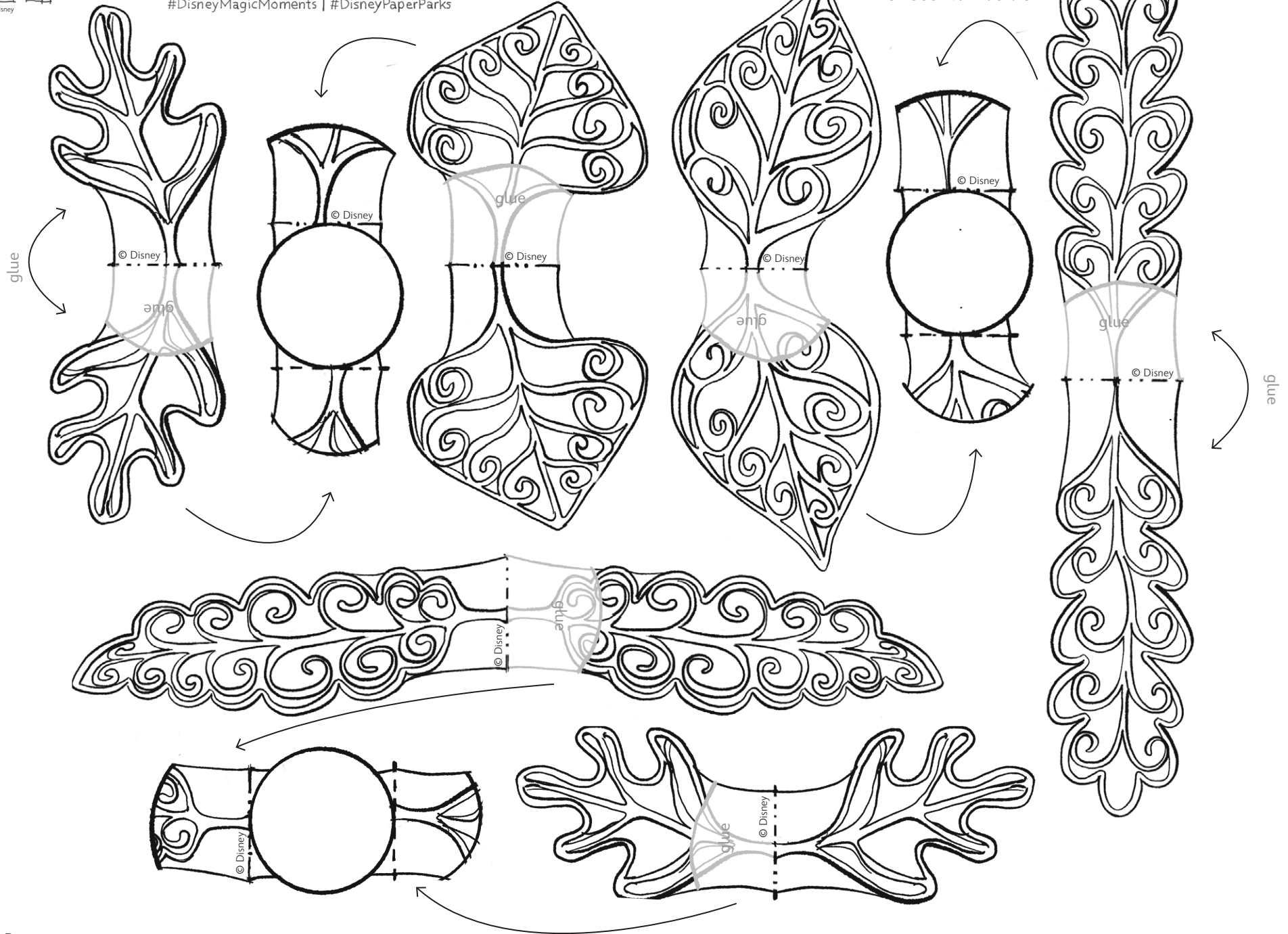


Disney Paper Parks

#DisneyMagicMoments | #DisneyPaperParks

MAD TEA PARTY

Sheet Number: 6



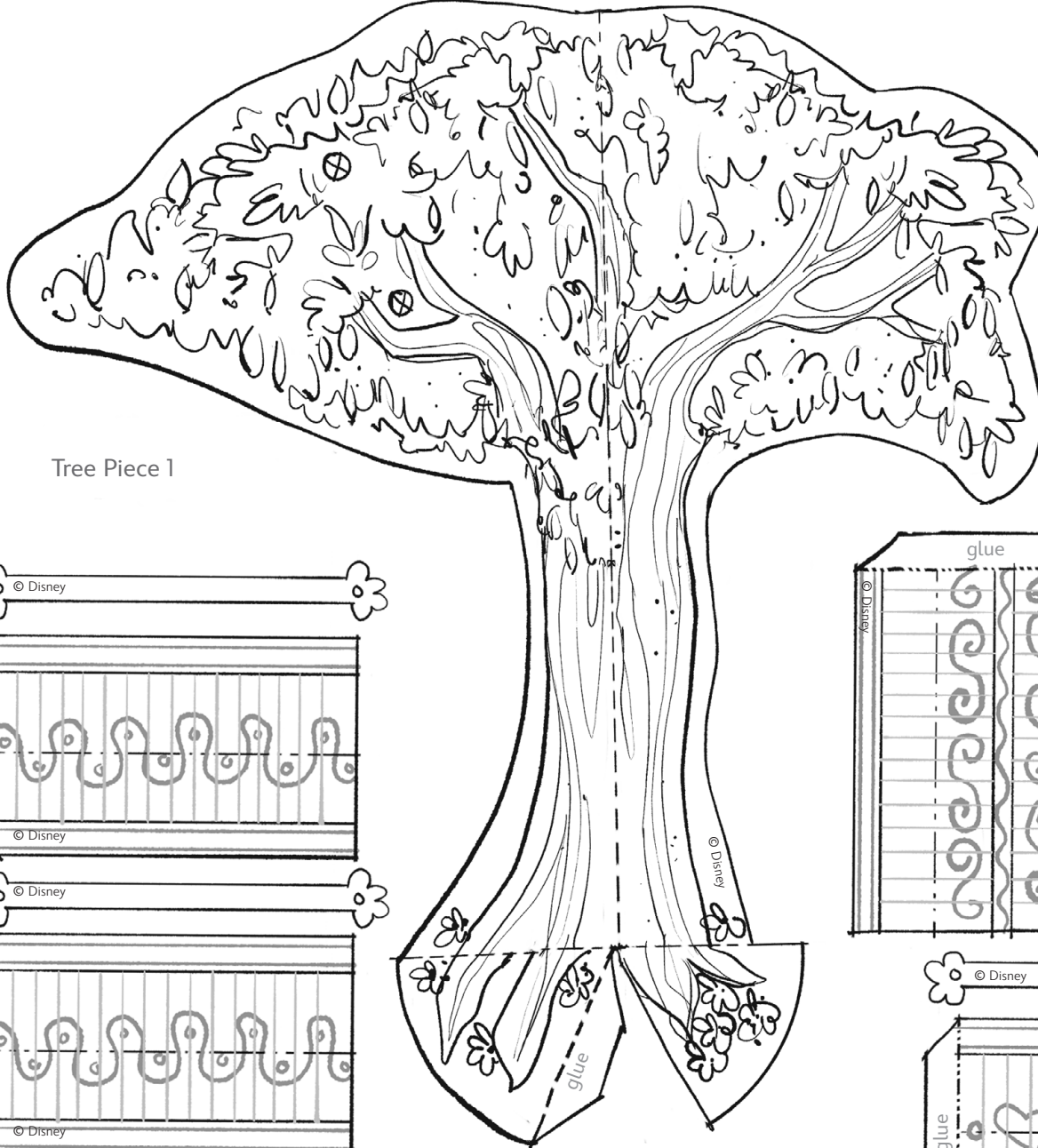


Disney Paper Parks

#DisneyMagicMoments | #DisneyPaperParks

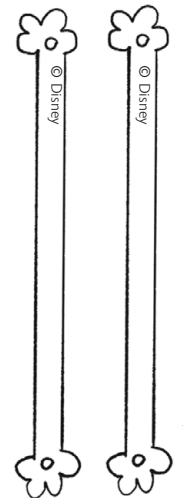
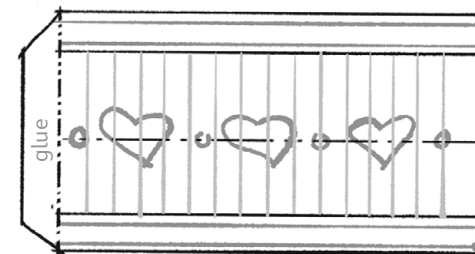
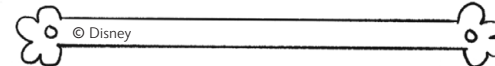
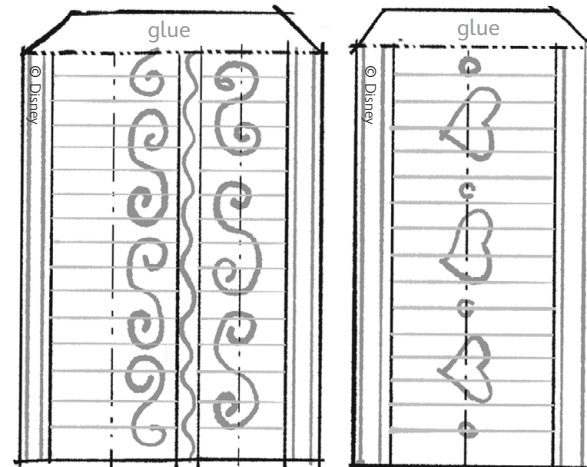
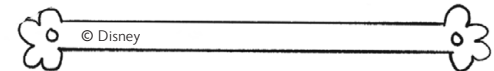
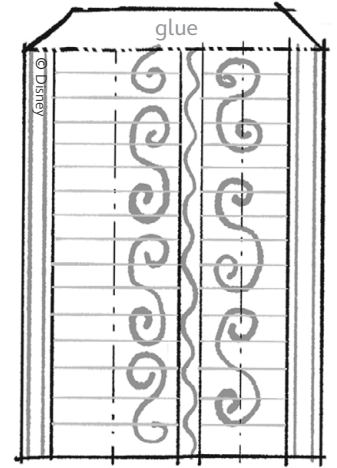
MAD TEA PARTY

Sheet Number: 7



Tree Piece 1

LANTERNS

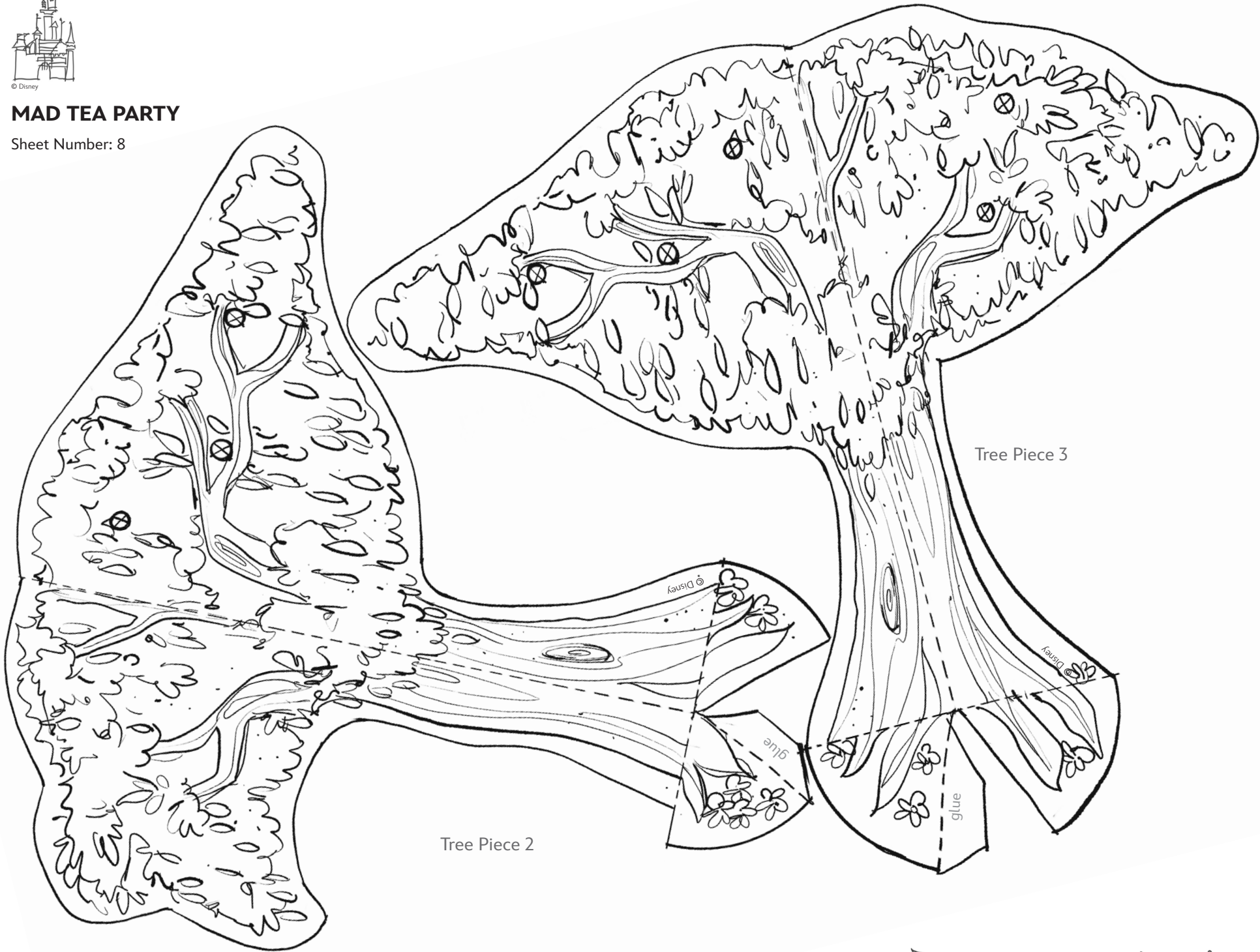


Lantern Hangers



MAD TEA PARTY

Sheet Number: 8



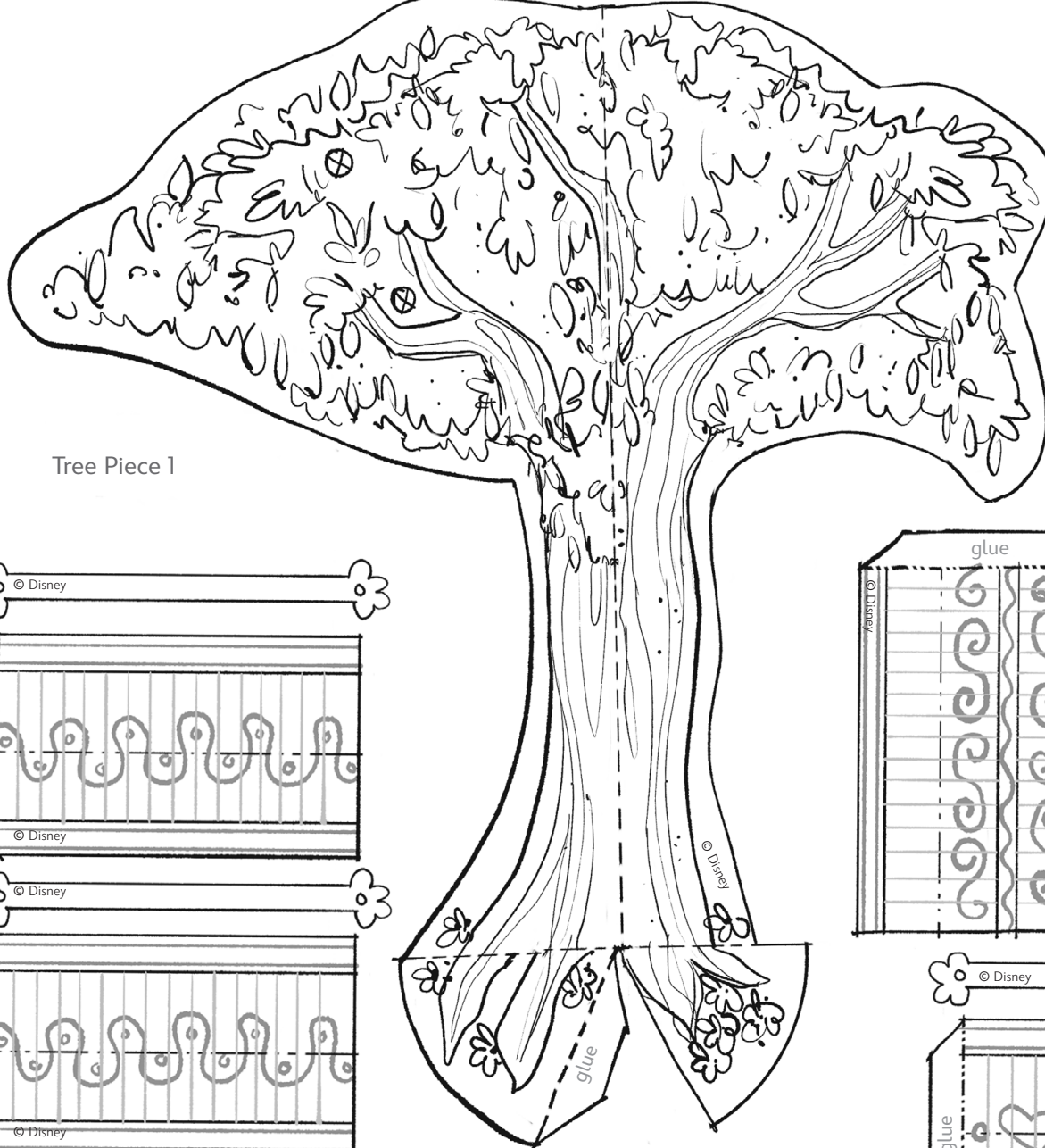


Disney Paper Parks

#DisneyMagicMoments | #DisneyPaperParks

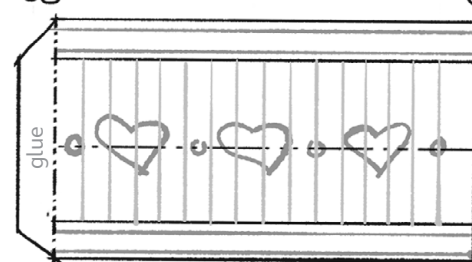
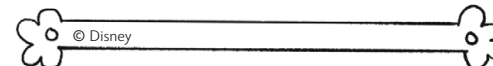
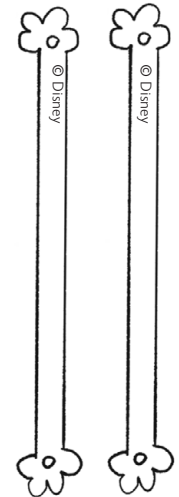
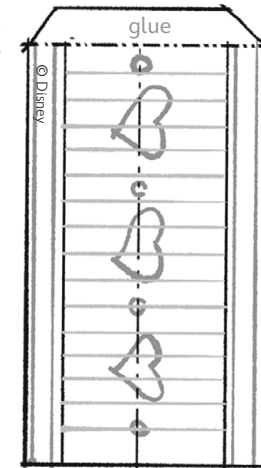
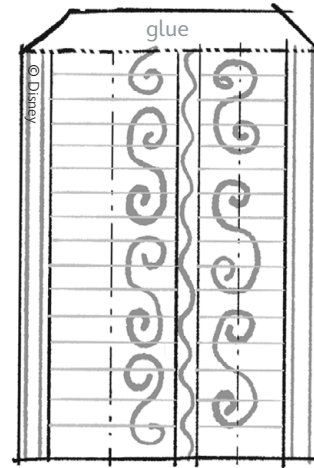
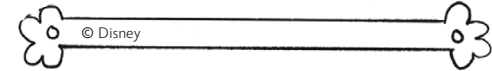
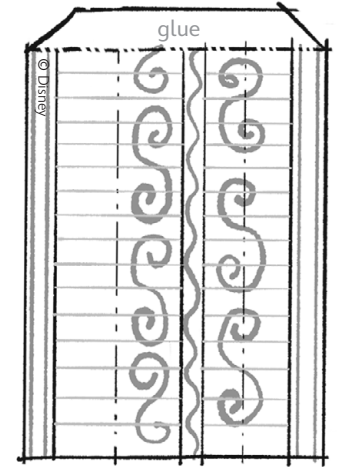
MAD TEA PARTY

Sheet Number: 9

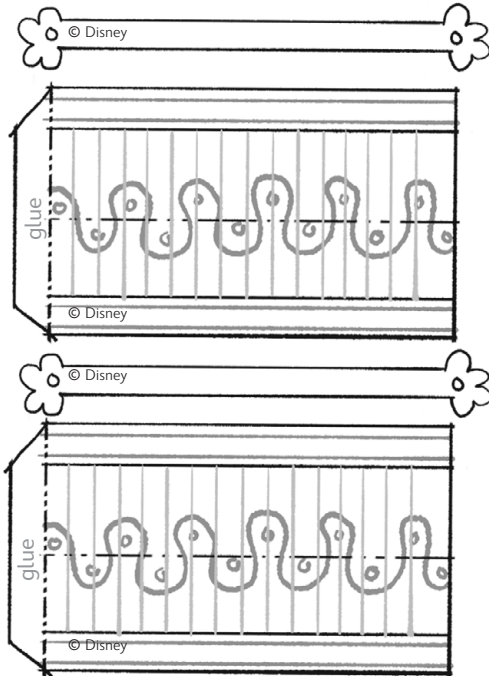


Tree Piece 1

LANTERNS



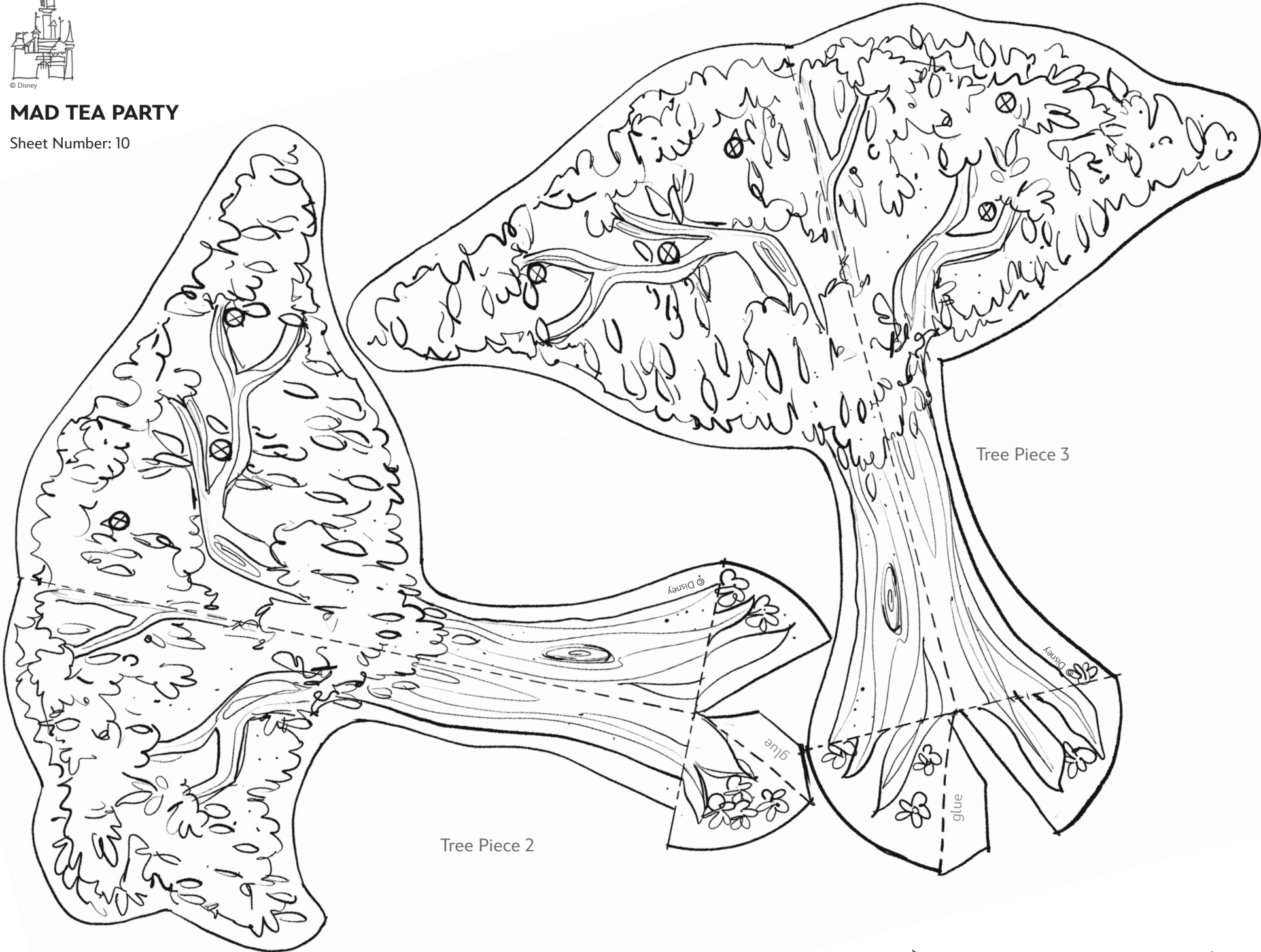
Lantern Hangers





MAD TEA PARTY

Sheet Number: 10



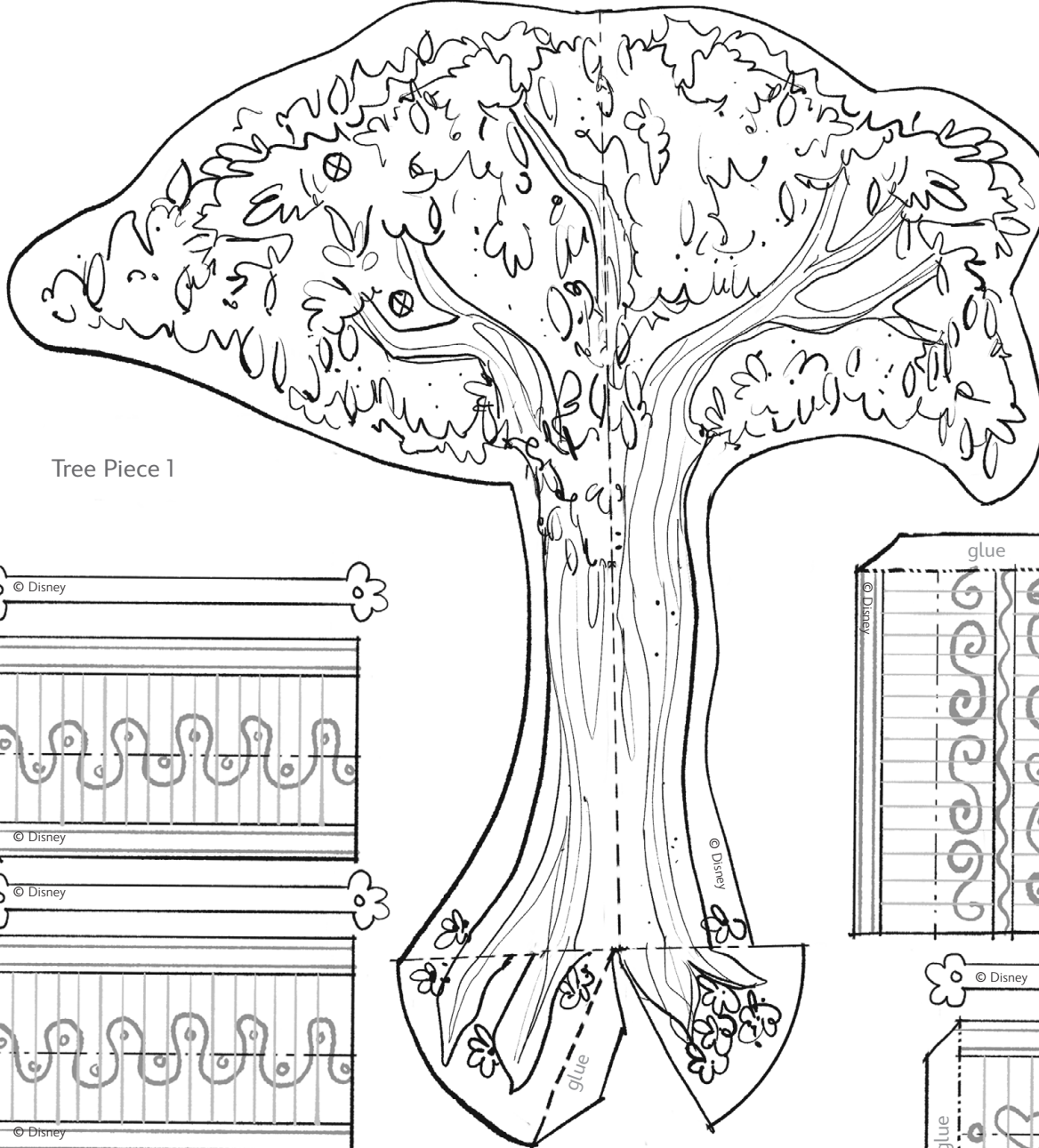


Disney Paper Parks

#DisneyMagicMoments | #DisneyPaperParks

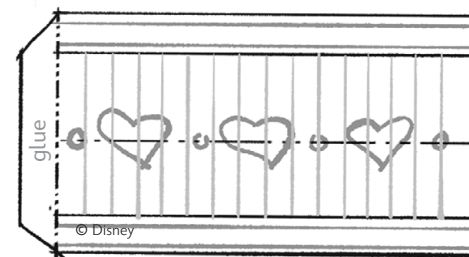
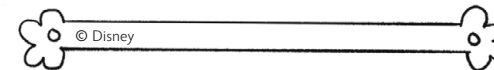
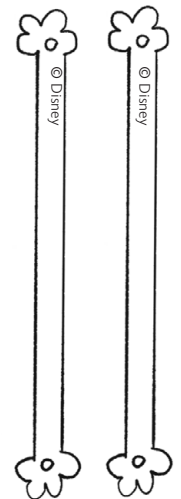
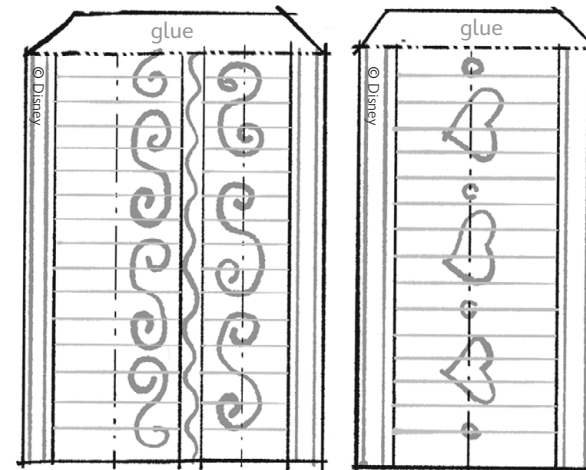
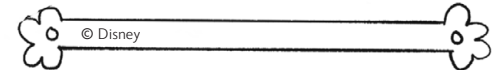
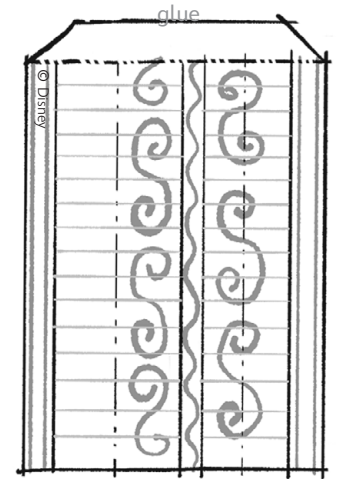
MAD TEA PARTY

Sheet Number: 11



Tree Piece 1

LANTERNS

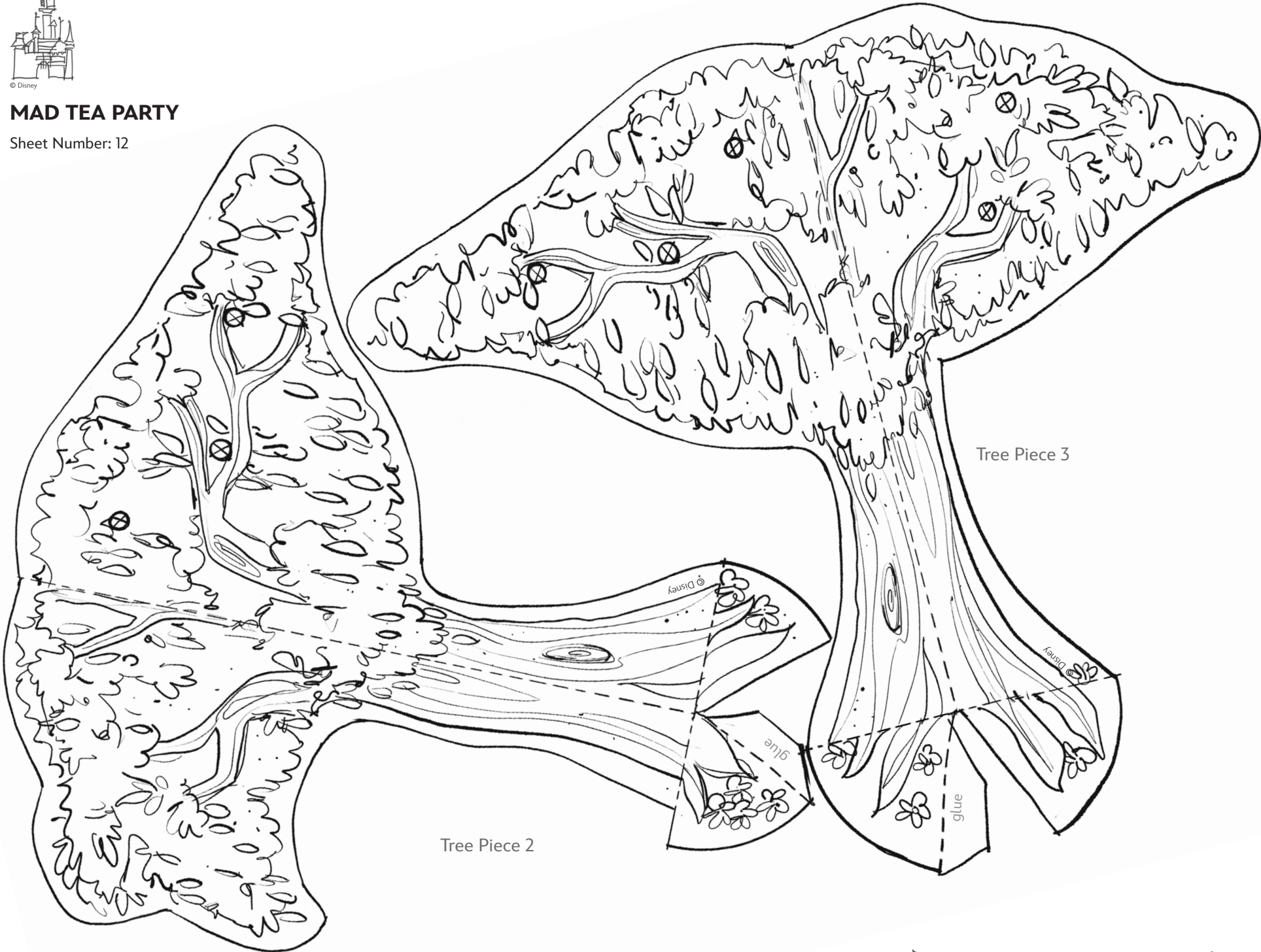


Lantern Hangers



MAD TEA PARTY

Sheet Number: 12





Disney Paper Parks

#DisneyMagicMoments | #DisneyPaperParks

HISTORY

Magic is back at Disneyland Resort theme parks! After being closed for over a year, guests are now welcomed back to enjoy unforgettable attractions, cherish special magic moments, and see beloved Disney friends like Mickey and Minnie.

For the occasion, Disney Paper Parks is expanding Fantasyland with the spinning Mad Tea Party and features the Royal Fan Faire wardrobe for Disney Paper Dolls. Originally made for Disneyland's "Walt Disney's Parade of Dreams" for Disneyland's 50th Anniversary Celebration, these lavish outfits are the perfect way to celebrate the reopening of the parks with Mickey and Minnie!

MATERIALS



Glue



Scissors



Crayons

GUIDE

Lines

- Valley fold, fold in front
- Mountain fold, fold behind
- Cut
- X-ray or guide line.

Arrows

- Fold in this direction.
- ↗ Fold behind.
- ↖ Unfold.
- ↔ Fold and unfold.
- ↻ Turn over.

Please Note: When cutting with scissors and working with any of the materials listed above, adult participation and supervision is recommended.

MICKEY AND MINNIE'S ROYAL FAN FAIRE ATTIRE

Sheet Numbers: 13, 14, 15, 16, 17, 18

INSTRUCTIONS



1. Sheets 11 and 14: Color and cut out the pieces. Start by folding the main body and gluing each tab as indicated. Assemble the head as shown in the image, with ears being glued on last.
2. Note: You may attach the arms if you prefer to keep a base model, or keep them off as each wardrobe comes with its own set of arms. Apply glue only to the very center of the feet and attach to base.
3. Sheets 12 and 13: Choose either the black and white version or colored version. Cut out all the pieces. Start with Trouser piece 1 and attach to Mickey. Fold Trouser piece 2 where indicated and use the fold to cut the pleats, then add the Jacket piece on top. Use tape or a dot of glue to overlap and close the top. Fold and glue the Arms to the back and sides of the Jacket. Fold the top of the collar down and glue on the Bowtie. Fold and glue the Cape to the shoulders and attach the Collar. Finally, glue the Crown together and attach to Mickey's head.
4. Sheets 15 and 16: Choose either the black and white version or colored version. Cut out all the pieces. Start with the Underlayer and shoes. Fold the Skirt only at the waist, wrap the model, then glue or tape to secure. Fold and glue the Jacket. Attach Arms to the back. Fold Bow and apply a dot of glue to attach to Minnie's head. Fold and attach Collar to the back. Finally, glue the Crown together and attach to Minnie's head.



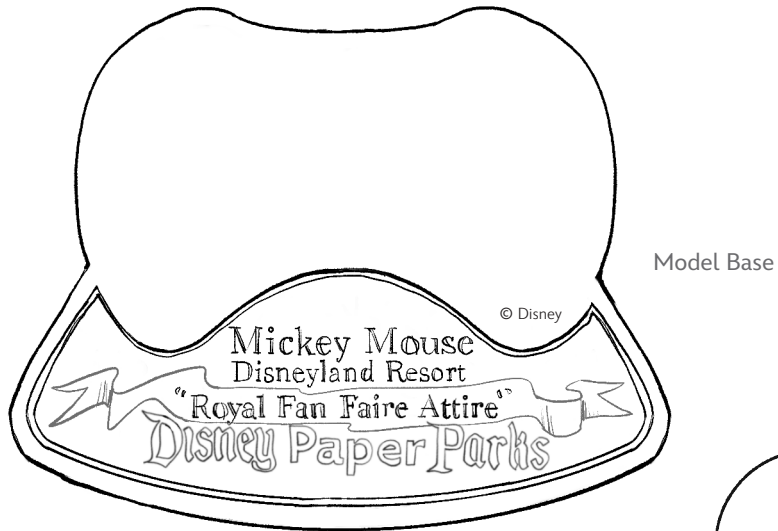
Disney Paper Parks

#DisneyMagicMoments | #DisneyPaperParks

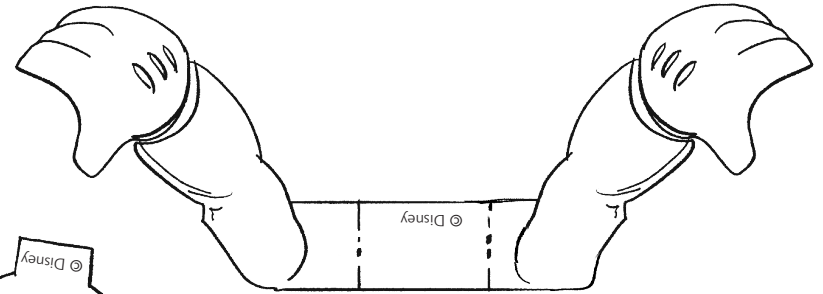
PAPER PARKS MICKEY

Base Model

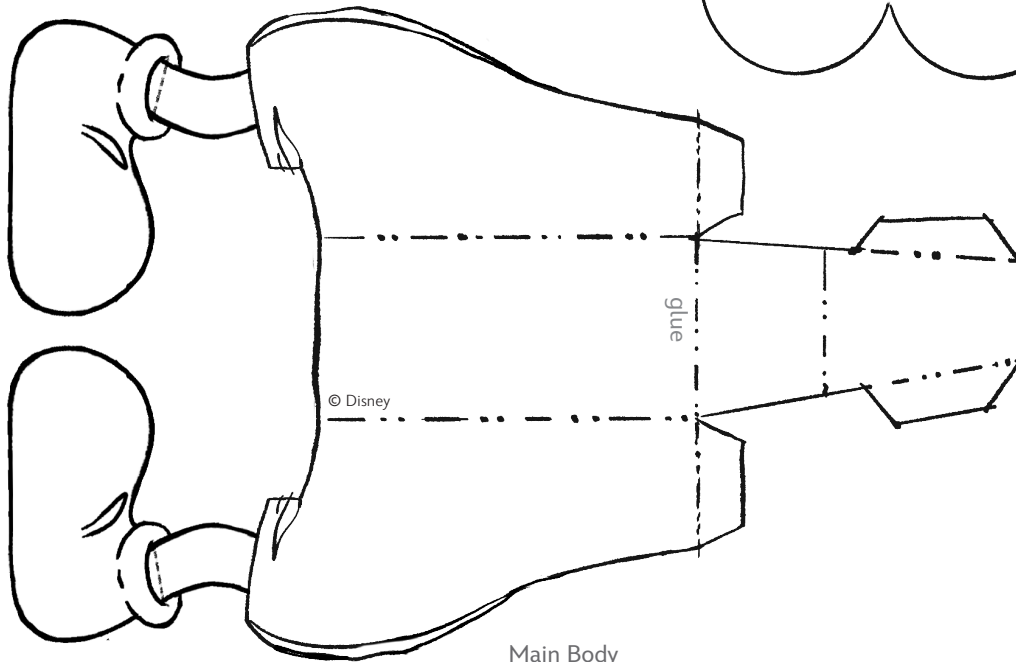
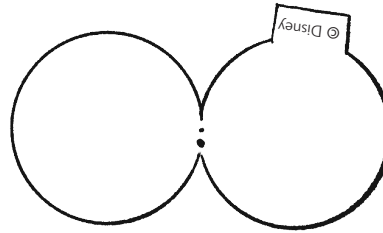
Sheet Number: 13



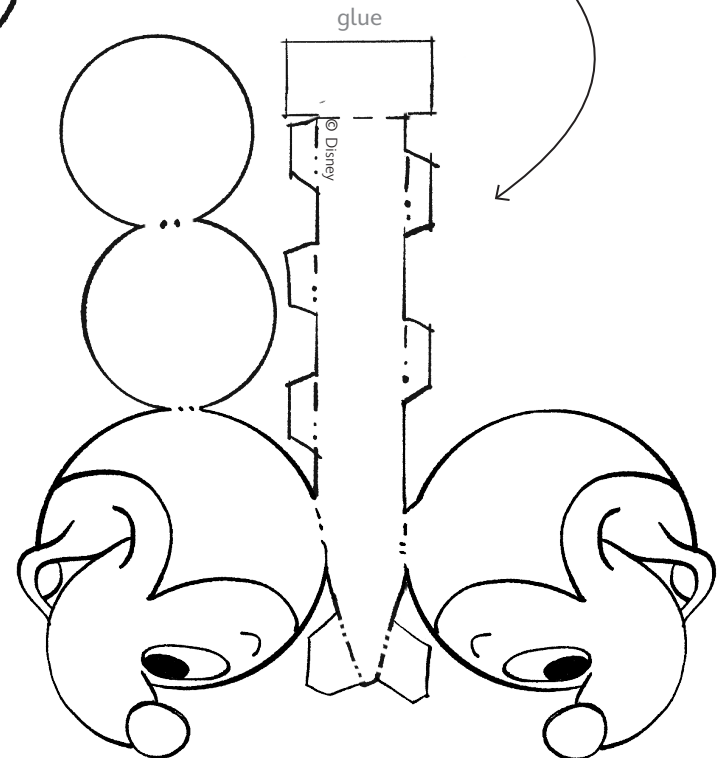
Model Base



→ attach ear after head assembly



Main Body



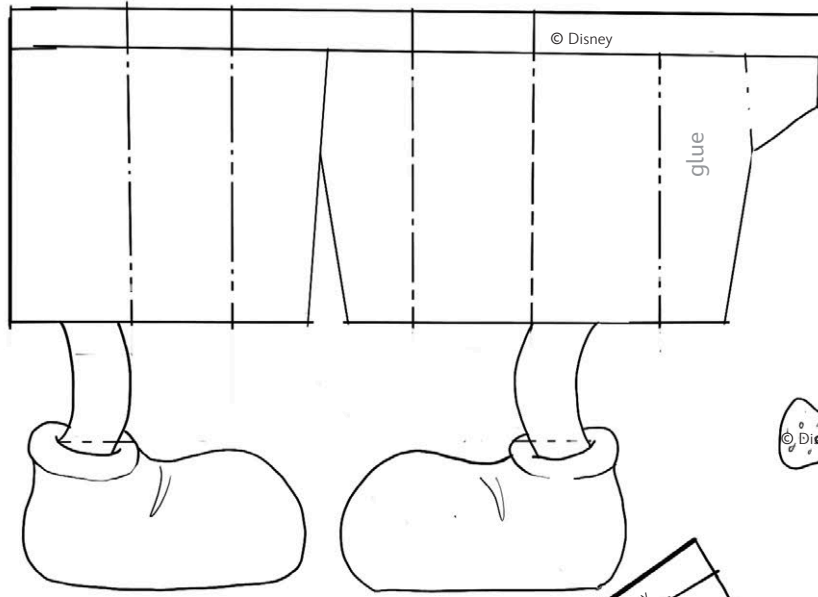


Disney Paper Parks

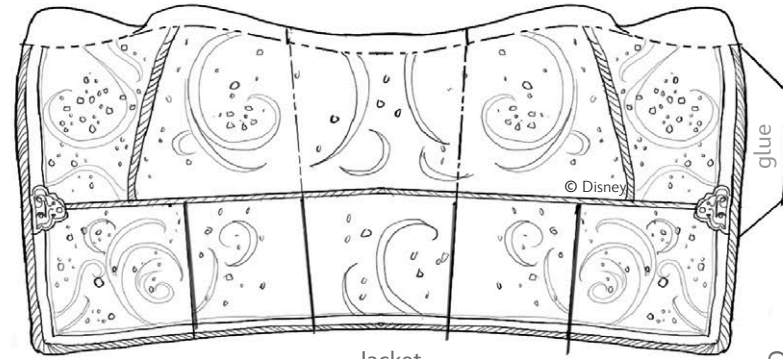
#DisneyMagicMoments | #DisneyPaperParks

MICKEY'S ROYAL FAN FAIRE ATTIRE

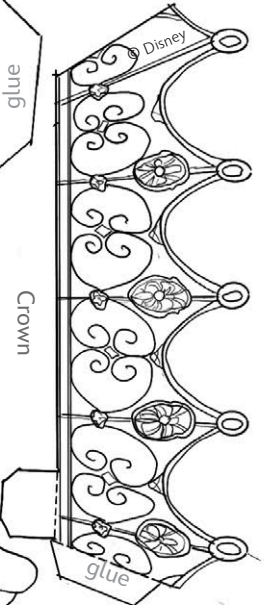
Sheet Number: 14



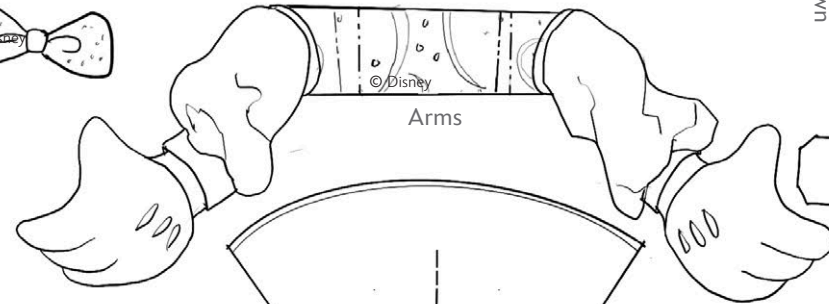
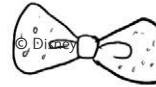
Trousers 1



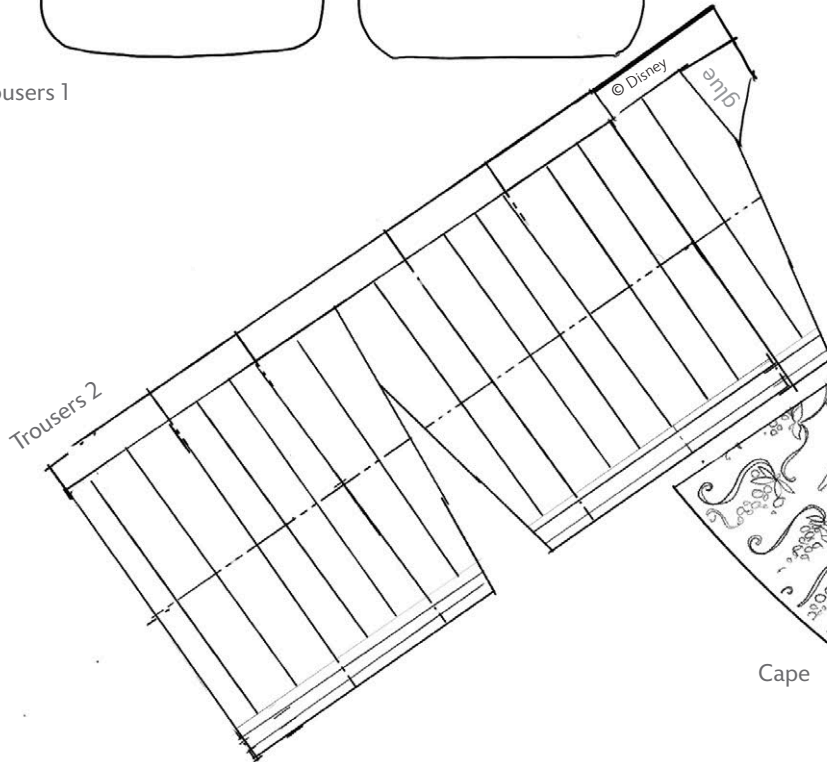
Jacket



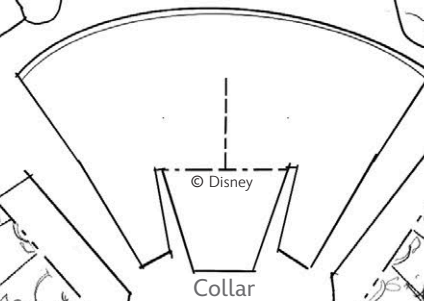
Crown



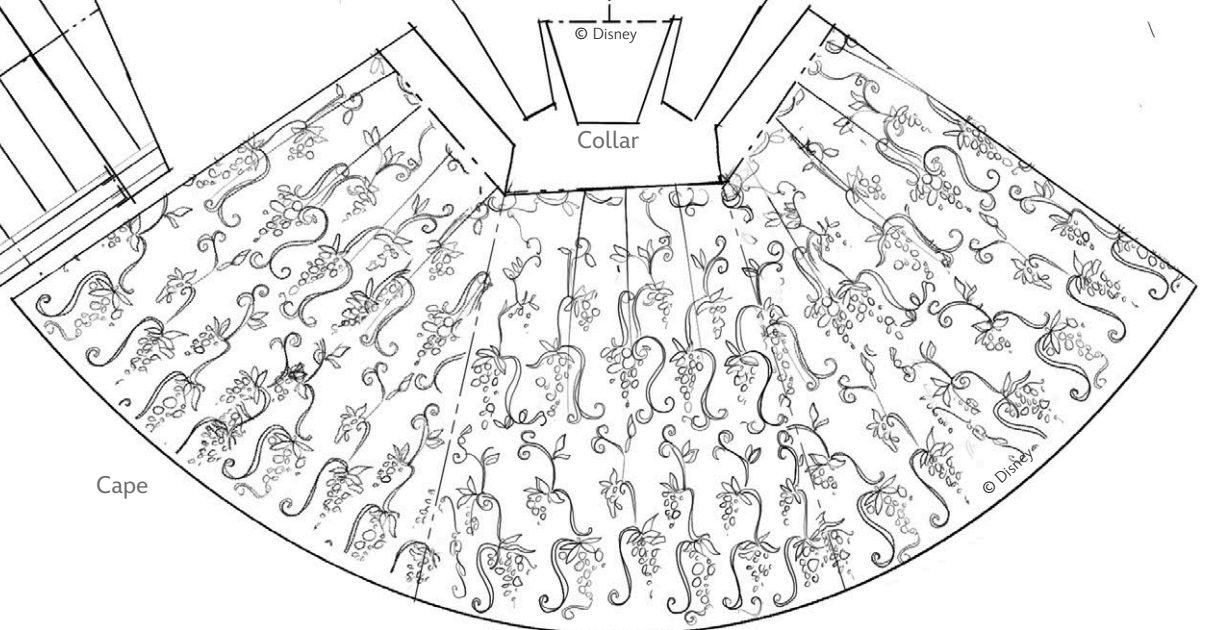
Arms



Trousers 2



Collar



Cape

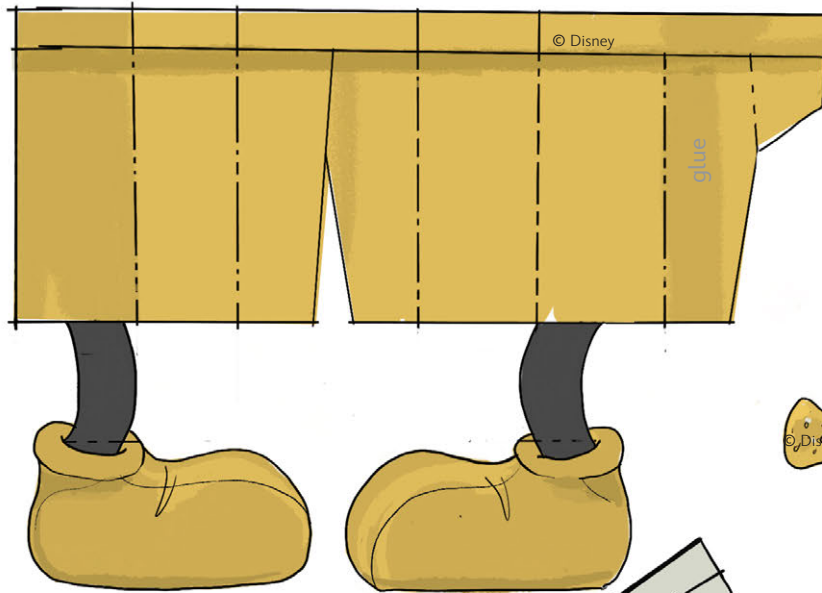


Disney Paper Parks

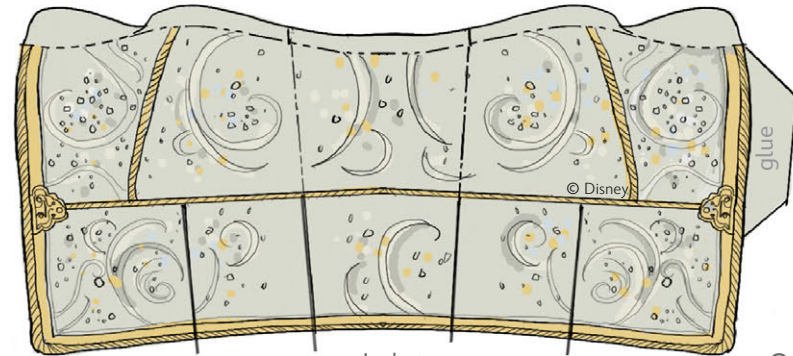
#DisneyMagicMoments | #DisneyPaperParks

MICKEY'S ROYAL FAN FAIRE ATTIRE

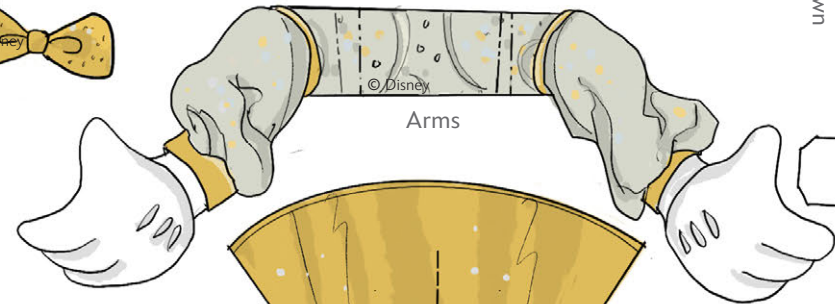
Sheet Number: 15



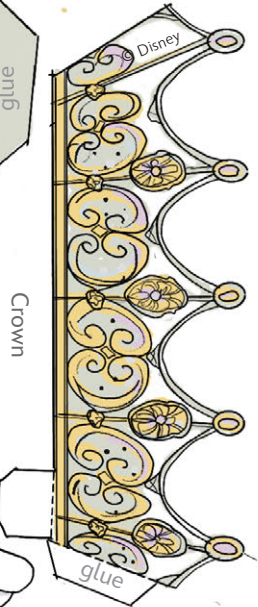
Trousers 1



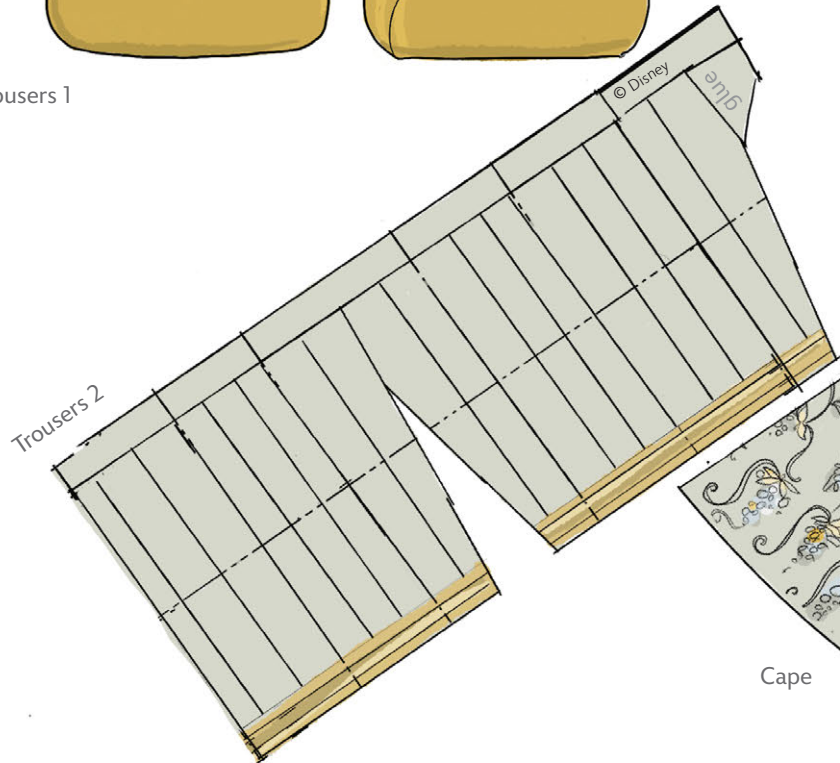
Jacket



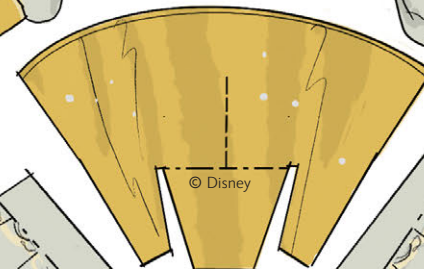
Arms



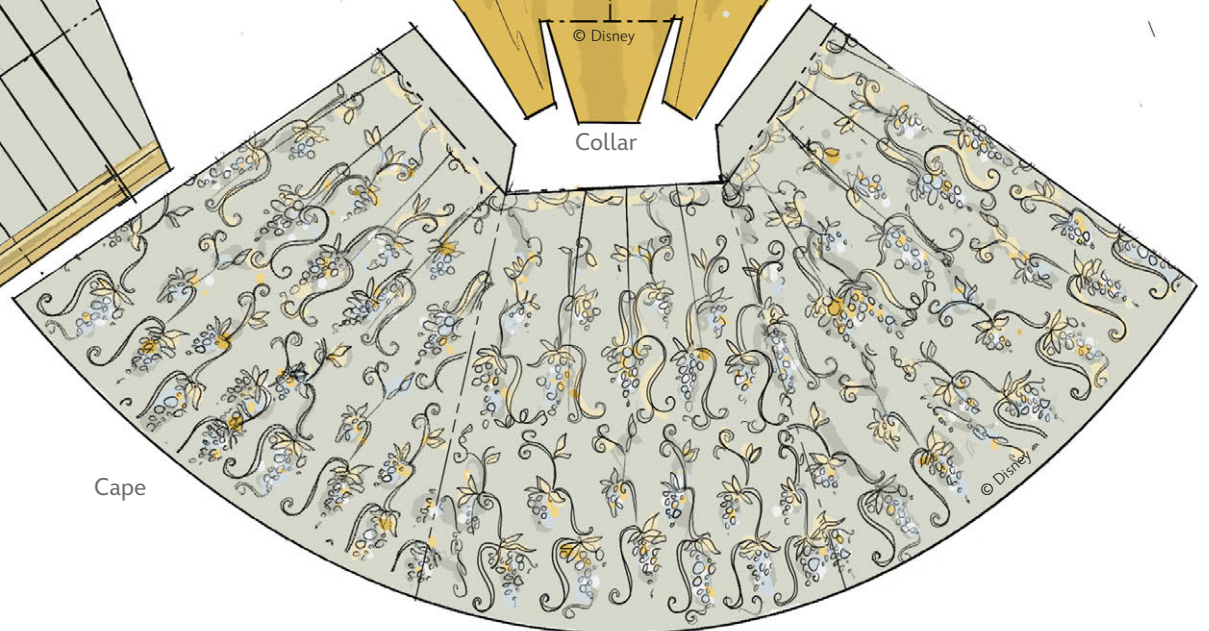
Crown



Trousers 2



Collar



Cape



Disney Paper Parks

#DisneyMagicMoments | #DisneyPaperParks

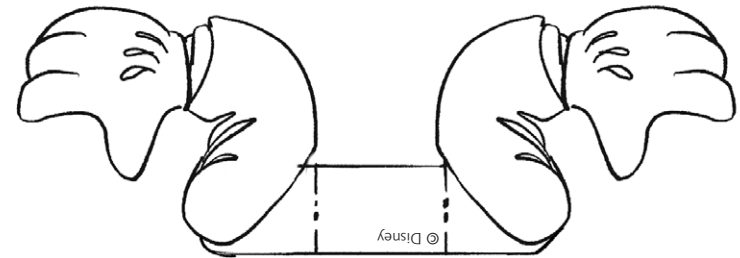
PAPER PARKS MINNIE

Base Model

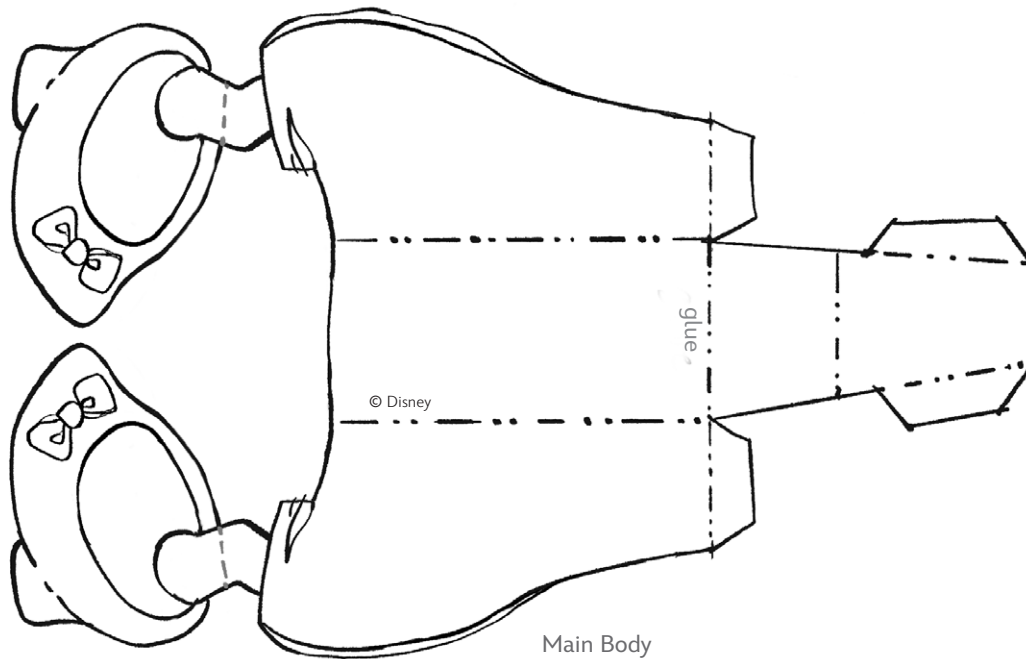
Sheet Number: 16



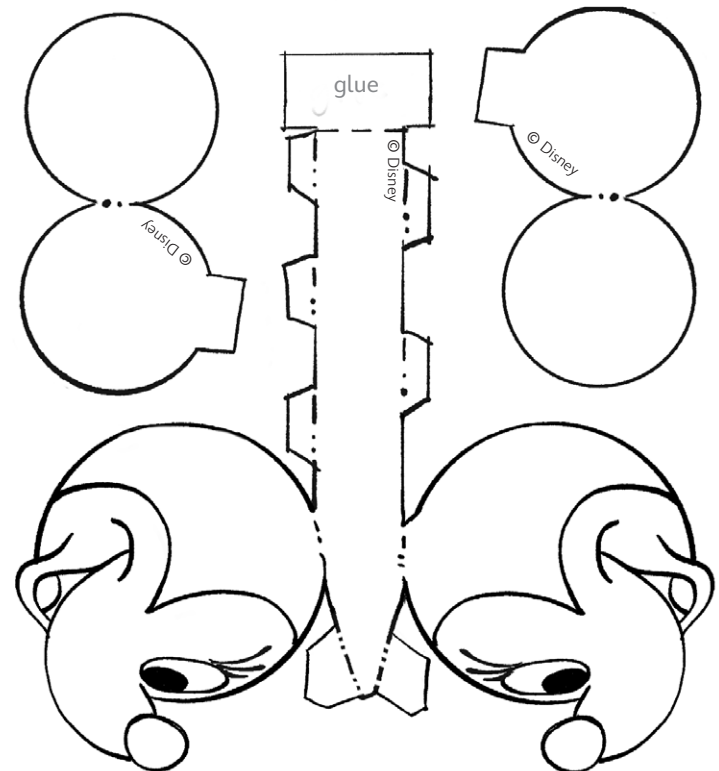
Model Base



attach ears after head assembly



Main Body





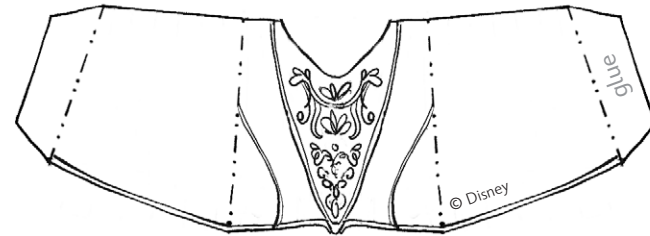
Disney Paper Parks

#DisneyMagicMoments | #DisneyPaperParks

MINNIE'S ROYAL FAN FAIRE ATTIRE

Sheet Number: 17

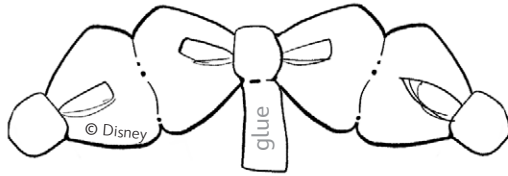
Jacket



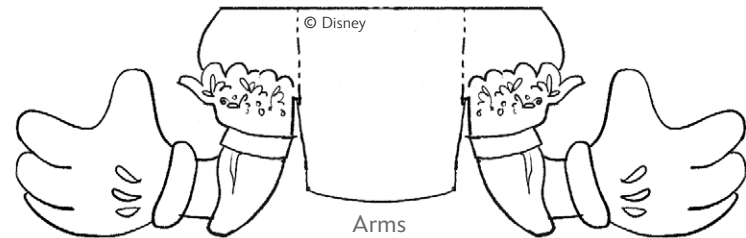
Crown



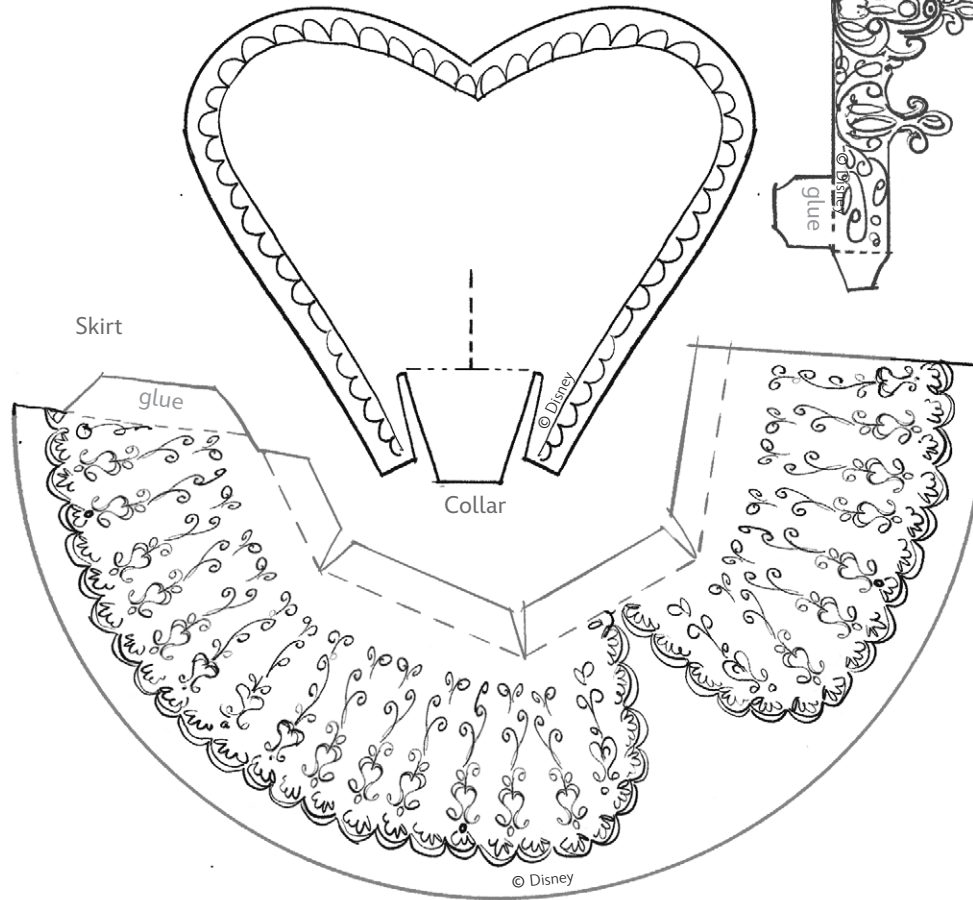
Bow



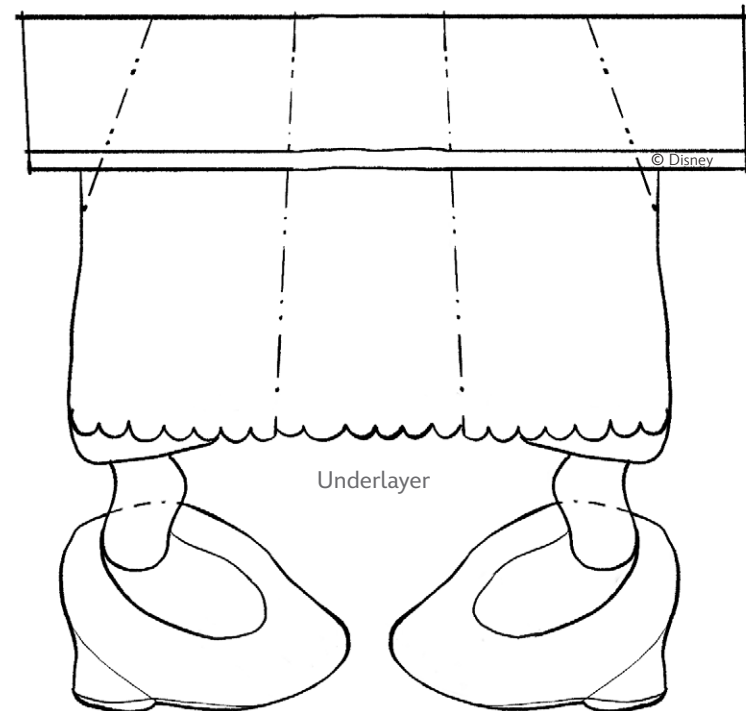
Arms



Skirt



Underlayer





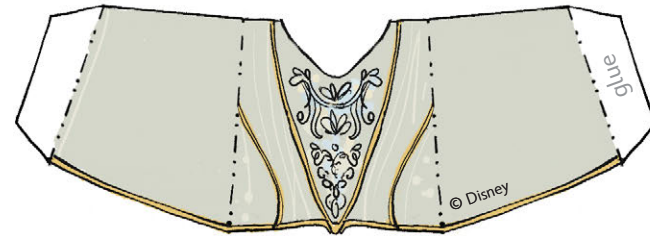
Disney Paper Parks

#DisneyMagicMoments | #DisneyPaperParks

MINNIE'S ROYAL FAN FAIRE ATTIRE

Sheet Number: 18

Jacket



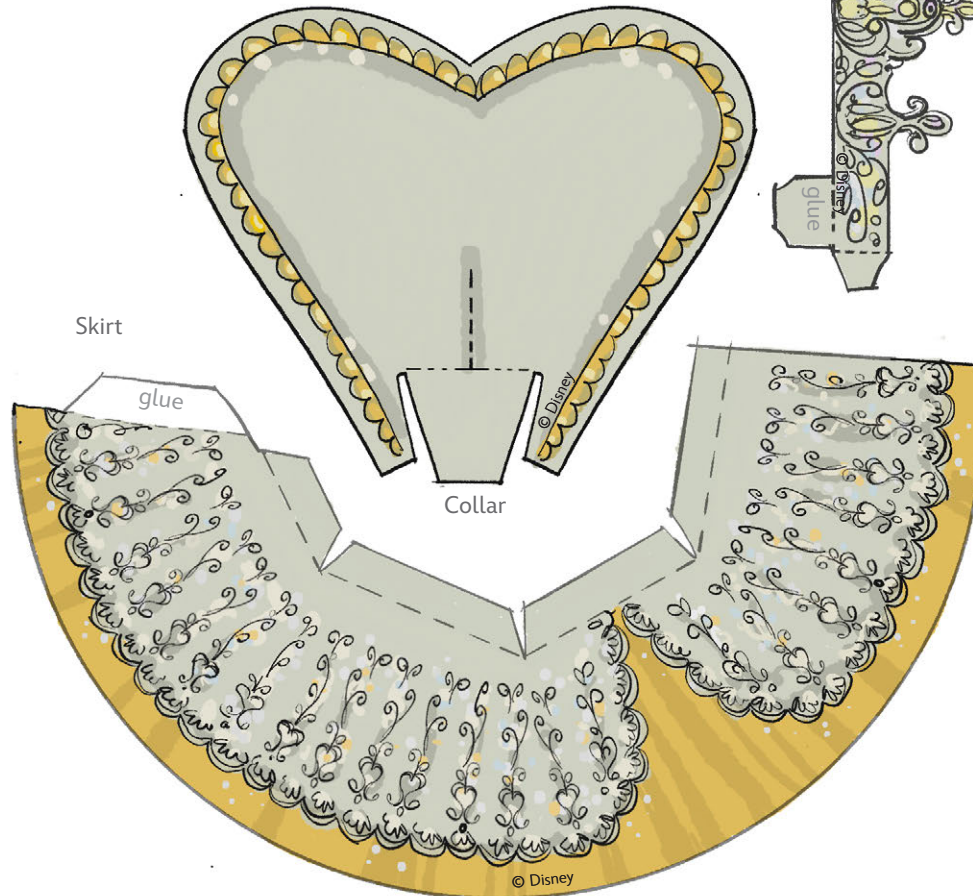
Crown



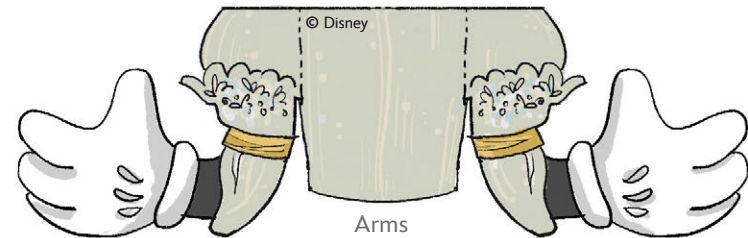
Bow



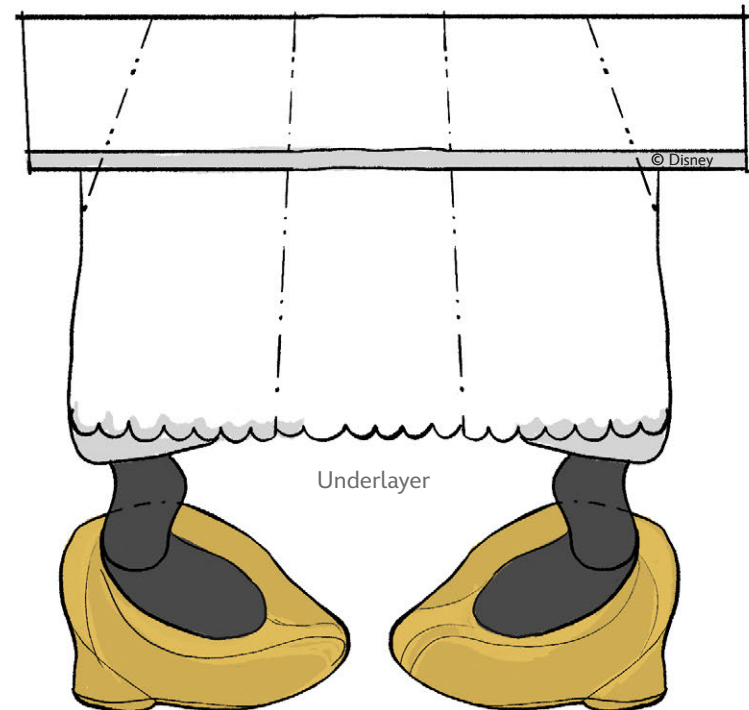
Skirt



Collar



Arms



Underlayer